

# National 4-H Club Week Being Observed

Washtenaw county's 1,208 4-H club members are observing 4-H Club Week, Sept. 28-Oct. 5. The youth are among 2,282,000 youth who belong to 4-H clubs in urban, suburban, and rural areas throughout the United States.

This year's 4-H Week observance has a number of local and national aims—among them to focus on 1963's citizenship-in-action goals for members; to emphasize career exploration and the value of wise decision-making regarding vocational choices; influence more boys and girls 10 to 19 years of age to join or form 4-H clubs; acquaint more parents with 4-H and seek their co-operation; and encourage capable and youth-minded men and women to volunteer as local leaders.

There are projects for youth with almost any interest. The projects include leathercraft, clothing, knitting, entomology, woodwork, science, dairy, swine, beef, poultry, sheep, rabbits, dog care, horses, photography, conservation, home design, money management, child care, automotive, horticulture, field crops, landscape, safety and tractor care and safety.

The green and white clover symbolizes citizenship in action; 4-H clubs salute the 4-H flag and the club takes action.

4-H club work involves more than 1,200 boys and girls between the ages of 10 and 18 years of age. Within the county there are as many clubs located in the cities as there are in rural areas and the projects are no longer challenging to only rural youth.

Washtenaw county currently has 75 4-H clubs. These usually have between five and 40 members in a club. The clubs are organized along project interests with all members involved in the same work area, or they may be a community club encompassing a variety of projects within the clubs and clubs may have any number of leaders.

From the impressive record of 4-H over the years, certain ingredients of the 4-H program have been tested and proved.

(a) The 4-H Project as a useful work experience provides a real-life "learn by doing" opportunity to apply useful information to everyday life.

(b) The local club is the center of group action and organizational experience.

(c) Local volunteer leaders determine the success of the 4-H experience of each member. The local leader, as a volunteer adult interested in young people, develops a close personal relationship with each member and serves as a counselor and teacher.

(d) The local 4-H club is an important part of the community, with its program oriented to community needs and circumstances.

Washtenaw 4-H clubs are emphasizing the need for more leaders and encouraging young people to join 4-H. Anyone interested in learning more about being a 4-H leader or member, may fill out and mail the form found below.

## 4-H INFORMATION REQUEST

Name \_\_\_\_\_ Age \_\_\_\_\_  
Address \_\_\_\_\_  
City & State \_\_\_\_\_  
Phone \_\_\_\_\_  
I would like to be a: \_\_\_\_\_  
Member \_\_\_\_\_ Leader \_\_\_\_\_

Mail to: The Co-Operative Extension Service  
Room 116, County Building  
Ann Arbor, Michigan

## QUOTE

He enjoys much who is thankful for little; a grateful mind is both a great and happy mind.

—Thomas Secker

## WEATHER

	Min	Max	Precip
Wednesday, Sept. 25	40	76	0.00
Thursday, Sept. 26	47	79	0.00
Friday, Sept. 27	50	47	0.00
Saturday, Sept. 28	53	54	0.00
Sunday, Sept. 29	45	59	0.02
Monday, Sept. 30	38	70	0.00
Tuesday, Oct. 1	45	76	0.00

# The Chelsea Standard

SEVENTY-THIRD YEAR—No. 14

14 Pages This Week

CHELSEA, MICHIGAN, THURSDAY, OCTOBER 3, 1963

10c per Copy

SUBSCRIPTION \$3.00 PER YEAR

## Bulldogs Romp To Win Over Manchester

### Will Battle at Ypsi Roosevelt Saturday Night

The Flying Dutchmen of Manchester had their wings clipped last Friday night by an explosive Chelsea offense coupled with a solid defense. The score was Chelsea 45, Manchester 6.

Chelsea's Bulldogs did not register on the scoreboard until the opening minutes of the second quarter. A pass from Curt Farley to Jim Cameron, who lateraled to Dick Lauson, covered the last 20 yards of a 62-yard drive which saw Chelsea's first touchdown. The try for the point after touchdown was not successful and Chelsea led 6-0.

(Continued on page five)

## Council Briefs

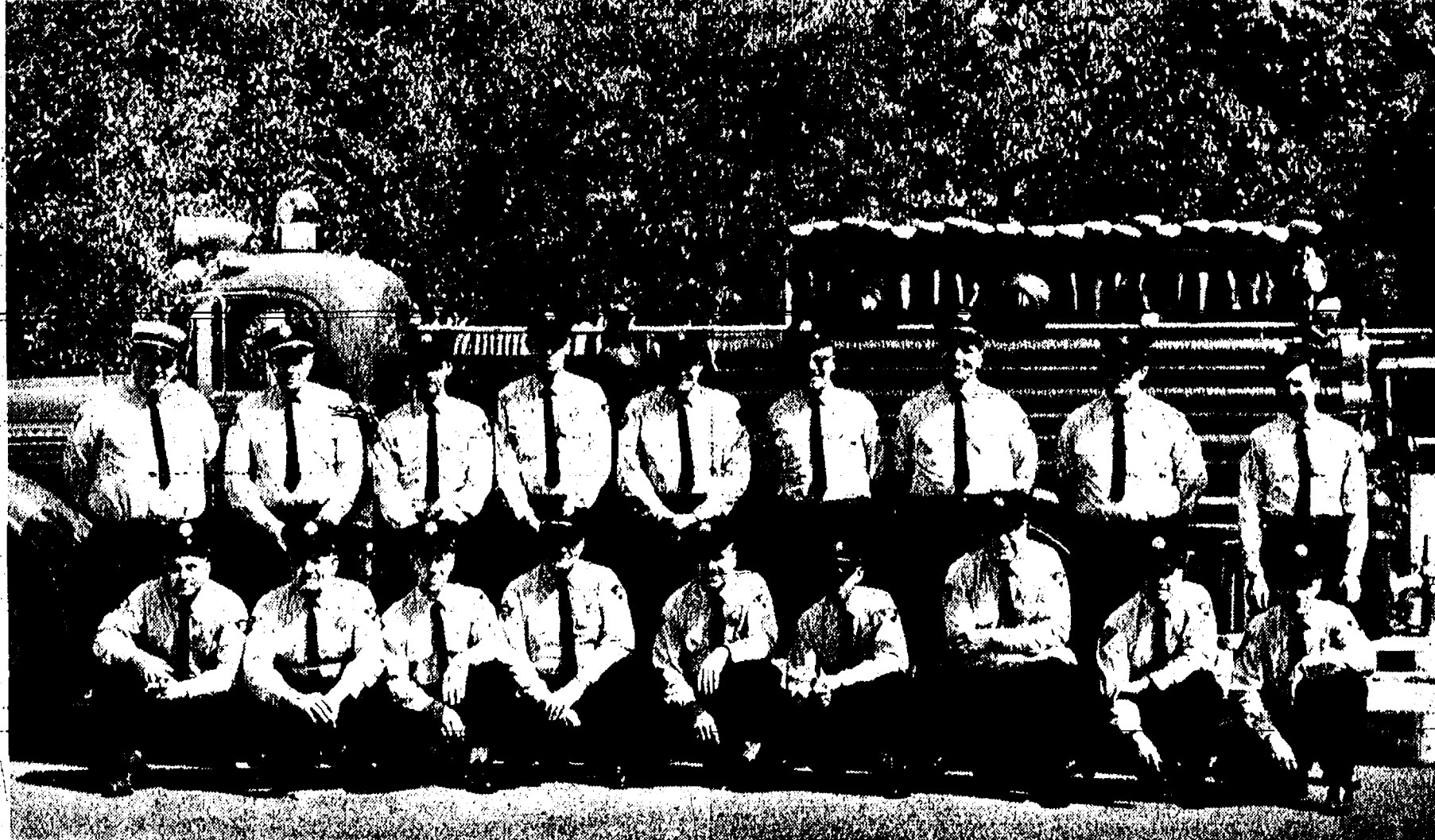
At the Oct. 1 meeting of the Chelsea Village Council a request was received from Albert Sauner of 525 Arthur St. for a zoning variance permitting erection of a garage within three feet of his property line. The request was approved by the Council on receipt of a letter from a neighbor, Albert Rosenreiter, stating he had no objection.

Discussion was held relative to the proposed purchase of Consumers Power Co. equipment and material located in the recently annexed south portion of the village. There was no official action taken.

Discussion relative to water construction in the Lanewood area but no action taken.

Zone VI Civil Defense matters were also discussed but not acted upon.

Discussion of the possible construction of a 28-space parking area immediately behind and north of McKune Memorial Library resulted in naming Trustee Clarence Wood to take the following action: (Continued on page eight)



FIRE PREVENTION WEEK, Oct. 6-13, is an especially appropriate time to salute Chelsea's volunteer firemen. Fire Chief James Gaken and the 18 men now on the roster of the Chelsea Fire Department. In observance of Fire Prevention Week, they are holding open house from 2 until 5 p.m. Sunday, Oct. 6 and again from 2 until 5 p.m. on Saturday, Oct. 12, in the fire hall in the Municipal Building. Those in the photo are front row, from

left: Paul Bollinger, Frank Reed, Merle Leach, George Atkinson, Marvin Schiller, Bud Hafner, Claude Spiegelberg, David Longworth and Bud Harker. Second row, same order: Fire Chief James Gaken, Mac Packard, Richard Rogers, Don Mshar, David Elkins, Ray Johnson, Arthur Paul, Ron Branham and Donald Hafner. Another volunteer fireman, LaVerne Hafner, is now in military service.

## Fire Department Plans Open House To Observe Fire Prevention Week

National Fire Prevention Week begins Sunday, Oct. 6 and in recognition of the special week, the Chelsea Fire Department will hold open house that day and again on Saturday, Oct. 12, in the fire hall in the Municipal Building. Hours for the open house both days are from two until five o'clock in the afternoon.

Fire safety movies will be shown on Saturday, Oct. 12, and coffee will be served.

All Chelsea's fire fighting equipment will be on display at both open house affairs and firemen will be on hand to greet those who attend.

Announcements of Fire Prevention Week Oct. 6-12, include men-

## Coffee Hour Slated for Community Chest Workers

A coffee hour for all area workers in the coming Chelsea Community Chest campaign is now definitely scheduled to be held Tuesday, Oct. 8, at 7:30 p.m., at St. Paul's United Church of Christ on East Summit St.

In addition to previously announced division chairmen for the campaign, the following were listed yesterday by Campaign Chairmen Thomas McClear and Arden Musbach as being in charge of village and rural solicitation:

Mrs. Stephen Slane, northwest area of the village; Mrs. Harold Dove, northeast area; Mrs. George Heydlauff, southeast area; and Mrs. William Blaess, southwest area.

Rural area chairmen are Mrs. Willis Heydlauff, southwest area; Mrs. Lester Czarnicki, southeast area; Mrs. Mary Clark, northwest area; and Mrs. Leon Shutes and Mrs. Laurence Noah, co-chairmen for northeast area.

As announced last week, other

chairmen are Donald Baldwin and William Marsh, industries; Robert Barlow, business; Charles Cameron, schools; and Mrs. Laurence Noah, rural area general chairman.

Co-chairmen McClear and Musbach have stated that the goal for this year's campaign is \$17,168. Benefitting agencies whose requests have been included in this year's budget are the Chelsea Recreation Commission; UAW-CIO Children's Christmas Party; Chelsea Band Instrument Fund; Chelsea Social Service; American Red Cross; Girl Scouts of the United States; Boy Scouts of America; United Foundation; Salvation Army; Catholic Social Service; and Huron Valley Child Guidance Clinic.

The Standard is currently publishing a series of articles explaining the work of each of the benefiting agencies.

Today's article, appearing on another page, gives a resume of Chelsea Social Service.

## 48 Boys Show Desire To Join New Key Club

### Boys Should Register Now For PP & K

Boys 8 to 11 years old are being invited to register now at Palmer Motor Sales for the 1963 "Pass, Put & Kick" competition sponsored by Palmer's as the Ford agency and the Chelsea JCC as the assisting organization. Co-chairmen for the Junior Chamber of Commerce are Lyle Christwell and Richard Ringe.

Competition is scheduled for Oct. 12 unless severe weather causes postponement. Alternate dates are provided in case of necessary postponement.

First prize in each age category is a National Football League style warm-up jacket with the official team emblem of the NFL team in this area; also the PP&K emblem.

Second prize in each age group is a specially designed, sturdily constructed football helmet, and third prize in each category is a regulation-size football autographed by a football star.

All boys who take part will receive participant certificates and the first, second and third place winners will receive a special certificate in addition to the prize won.

Boys must be accompanied by a parent or guardian when they register for the contest at Palmer Motor Sales.

Registrations will be accepted until Oct. 11.

Scores of local first-place winners will be sent to PP&K headquarters to determine state, area, division and national winners.

Approximately 40 boys participated in last year's PP&K contest in Chelsea.

## Jaycees Plan Annual Chicken Barbecue Oct. 13

The annual chicken barbecue scheduled for Oct. 13, was discussed during the business session at the Junior Chamber of Commerce dinner meeting Tuesday evening at Stiver's restaurant. It was explained that Lloyd's Dairy Bar is handling advance ticket sales for the event scheduled to be held at Pierce Park.

Don Beach of Ypsilanti was a guest at Tuesday's meeting, making an official visit to the Chelsea Jaycees in his capacity as District V state vice-president.

George Wallace, a member of the Chelsea Jaycees, presented the evening's program, using slide pictures to illustrate his talk about the Peace Corps. He and his wife were formerly in the Peace Corps and the pictures he showed were of training camps in Puerto Rico.

## Kiwanis Club Working With High School Boys

Dr. Clare Warren, ticket sale chairman for the Kiwanis-sponsored travelogue series which begins Oct. 19, reported at Monday's Kiwanis club meeting that because of the anticipated "sell-out" of tickets it was decided that no individual tickets will be sold at the door.

Dr. Warren explained that this means that only persons with season tickets will be admitted. He stressed again, however, that a season ticket is worth six admissions in any combination and that some season tickets are still available.

Hartmut Henning, whose home was given as West Rhau Der Sehn, Niedersachsen, Germany, was the guest speaker at Monday's dinner meeting. He is spending the 1963-64 school year at the home of Mr. and Mrs. George Frisinger as an exchange student under the "Youth For Understanding" program of the Michigan and Washtenaw County Councils of Churches.

Henning spoke of his impressions of school—he attends Chelsea High school—and life in the community and also mentioned differences noted between schools here and in Germany. He was introduced by Don Turner as program chairman.

Henning, accompanied by George Frisinger and son, David, came to the meeting with Robert Foster. Also a guest at the meeting was Dexter Kiwanian George Camp.

Edwin Greenleaf, Kiwanis Key club committee chairman, reported on the meeting held Wednesday evening at Chelsea High school for the purpose of forming a Key club in Chelsea. A Kiwanis-sponsored project for boys in high school.

Key club members and officials from away who were present to participate in the meeting included Dave Davis, son of Jackson, a high school senior who is treasurer of the Michigan District of Key Club International; Ken Fullerton, Jackson high school junior who is lieutenant-governor of Division VIII of the Michigan District (this area); Del Borgsdorf of Detroit, a senior at Redford High school, who is Key Club International vice-president and immediate past Michigan treasurer of Key Club International; Tom Klassen of Redford High school who attended as a guest; and Kiwanian David S. Leeke of Jackson who is past district chairman of the Michigan District Key Club International.

Leeke's talk at Wednesday's meeting, Greenleaf said, centered on experiences he has had in the past 10 years of Key club work in Jackson where there are now five Key clubs.

Davis, Fullerton and Borgsdorf spoke at Wednesday's meeting. (Continued on page eight)



ALMA ROZAS, known to her friends as "Ginger," is pointing to the spot on the large globe where her home country, Uruguay, is located. She is spending the 1963-64 school year in this area and making her home with Beverly Windell, daughter of Mr. and Mrs. James Windell, 12345 Jackson Rd. She is in the United States under sponsorship

of the "Youth for Understanding" program of the Michigan Council of Churches and is attending Chelsea High school. In the photo with her are, left to right, seated, Pam Davis and Beverly Windell, and standing from left, Lynn Harvey, Nancy Koontz, Jerry Bristle and Robert Musbach, leader of Rogers Corners Herdman 4-H club.



Established 1871  
**The Chelsea Standard** Telephone GR 5-3551  
 General Excellence Award by Michigan Press Association  
 1951-1952-1953-1954-1955-1956  
 Walter J. Leonard—Editor and Publisher



Published every Thursday morning at 300 North Main Street, Chelsea, Mich., and second class postage paid at Chelsea, Mich., under the Act of March 3, 1879.

Subscription Rates (Payable in Advance):  
 In Michigan: Outside Michigan:  
 One Year \$3.00 One Year \$4.00  
 Six Months \$1.75 Six Months \$2.25  
 Single Copies \$ .10 Single Copies \$ .10  
 Service men or women, anywhere, 1 year \$3.00

NATIONAL EDITORIAL ASSOCIATION  
 AMERICAN NEWSPAPER PUBLISHERS ASSOCIATION

## GOVERNOR ROMNEY REPORTS



The problems of an increasing number of senior citizens were paramount when I drew my proposal for fiscal reform.

Much criticism has been directed at a single aspect of this program—the provision to defer property taxes for senior citizens.

Without even considering the validity of these criticisms, and certainly they have some validity, many other benefits which my program would afford senior citizens are generally being overlooked in the debate over the property tax deferral provision.

Here are some of the ways in which the program would recognize the special problems of senior citizens.

1. Social security benefits would be exempted from state and local income taxes.

2. Every citizen over 65 would receive a double exemption—\$1,200—in computing his or her state income tax. Over 65, this would mean that the first \$2,400 of family income over and above social security benefits would be exempt.

3. If the city in which the senior citizen lives imposes an income tax, each couple over 65 would have a \$2,400 tax exemption over and above social security benefits in computing that tax too.

The first three points add up to the fact that the average senior citizen couple will pay no state or local income tax. In addition, senior citizens will enjoy the following tax savings:

4. Prescription drugs would be exempted from the sales tax—a significant savings where there is illness.

5. The four percent sales tax would be taken off food.

6. Along with other citizens, senior citizens would get a 20 percent reduction in local property taxes imposed for school purposes.

7. The intangibles tax would be repealed. This would mean a real savings for many senior citizens who have retired and receive a part of their income in dividends or interest.

8. Finally, there is the property tax deferral itself. I recognize the need for senior citizen relief from property taxes. I think my proposal is a sound one. Under this provision, senior citizens would have the choice of deferring property taxes on their homesteads until their death or until they dispose of their property.

At the outset, this would be limited to taxes up to \$200 per year on homesteads with a market value of less than \$10,000 where family income is under \$2,000.

About 62,000 families would be eligible for this relief immediately.

**Free Hunting Folder Available from State Conservation Dept.**

Lansing—Copies of "Michigan Hunting," a field aid for both beginners and veteran hunters, are available for the asking at sporting-license dealers in the state and through the Conservation Department's publications room in Lansing.

The free pocket-sized folder answers questions of the newcomer about where, what, how, and when to hunt in this state. It passes along some helpful tips on guns and shot sizes, and gives other field information to also serve as a good source of basic review for experienced hunters.

Also featured in this handy guide are state game area maps which pinpoint lands open to public hunting.

## SCIO DRIVE-IN THEATRE

6588 Jackson Road, Ann Arbor—Phone NOrmandy 8-7083

FRI. - SAT. - SUN.

OCT. 4-5-6

**"A GATHERING OF EAGLES"**

**"A LIST OF ADRIAN MESSENGER"**

IN COLOR  
 With Rock Hudson, Rod Taylor, Barry Sullivan

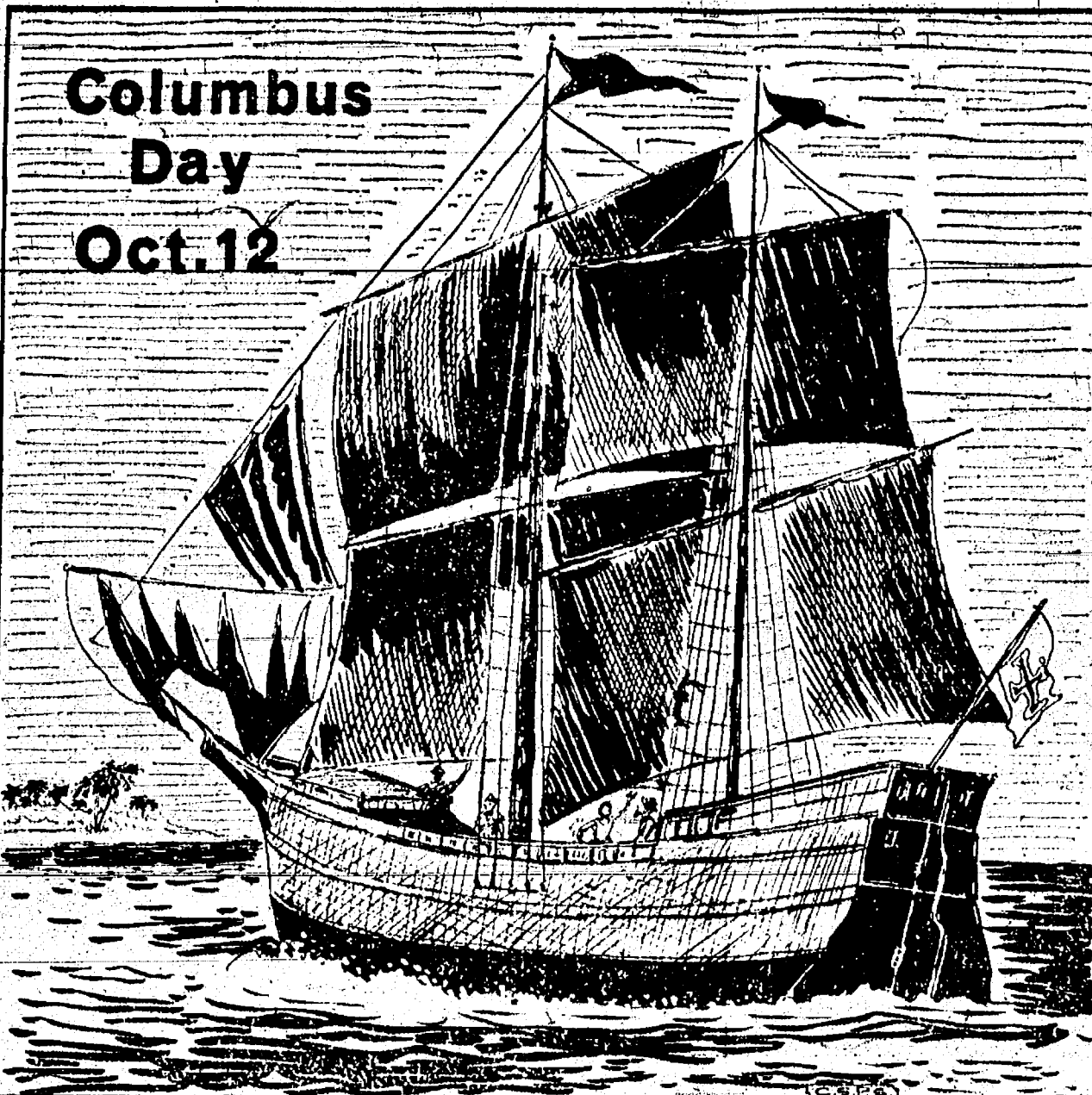
With Kirk Douglas and Dana Wynter

ALSO: CARTOON

Theatre open Fridays - Saturdays - Sundays for balance of season.

## ONWARD TO A NEW WORLD

**Columbus Day**  
**Oct. 12**



## MICHIGAN MIRROR

By Elmer E. White, Secretary, Michigan Press Association

### Double It

Education facilities above the high school level are increasing in Michigan, according to Superintendent of Public Instruction Lynn M. Bartlett.

Construction at the state supported colleges and universities make this very apparent, but it is even a bigger factor where community colleges are concerned.

Bartlett noted that when the Michigan community college law is 13 years old, the number of its public locally operated colleges will have doubled.

"While this growth rate has been outstanding, we will gain almost to almost double this number in the next 10 years if we are to satisfy anticipated demands for post-12th grade education," said Bartlett.

By next fall, 18 community colleges will be in operation. In 1951, when the legislation to establish community college departments was passed, nine junior colleges existed.

Growth of these institutions in terms of use has been almost more significant. The superintendent noted that enrollments in community colleges have grown in the past 10 years from 8,000 to an estimated 40,000 this fall.

Bartlett emphasized, however, that Michigan has not yet met the real impact of need for community college space. The biggest jump in college enrollments is expected to hit in 1965.

"Considering the fact that some of our community colleges are not now able to accommodate all those who seek admission, we can see the imperative need for rapid expansion in this area," he said.

One new institution, Bay de Noc Community College in Escanaba, opened this fall. Next year the 18th community college, in North

### Seek Tenure

The Michigan Education Association would very much like to have Michigan become the 25th state to provide tenure for public school educators.

"A careful study of tenure in the 59 Michigan school systems where tenure has been adopted locally has convinced the M.E.A. Board of Directors that this important principle should be applied on a state-wide basis so that all educators may enjoy the advantages of this provision," said Dr. E. Dale Kennedy, M.E.A. executive secretary.

"It is another important step in our continuous efforts to upgrade educational programs available for Michigan children," he said.

With this in mind, the association is sponsoring a petition campaign beginning in mid-October to secure 250,000 signatures of proponents of a tenure law.

Tenure, as defined by the M.E.A., is the principle of having probationary periods of employment followed by assured positions as long as a teacher continues to give satisfactory service.

The association's argument for the law included that good administrative practices are encouraged, comprehensive personnel policies are made desirable, and adequate

### Students Present

A touring drama group will again offer its services to Michigan communities this fall and winter, courtesy of Michigan State University's Cap and Gown series.

The series is part of MSU's continuing education service. First of the two productions will be Euripides' immortal classic, "Medea." It will be presented starting in November by the Performing Arts Company, a group primarily composed of graduate students with a wide range of theatrical training and experience.

The second production, starting the tour in February, will be Looney's "French comedy." "Rhinceros."

Most of the members of the specially selected group have had community or professional theatre experience as well as educational backgrounds in drama.

Population explosion? Michigan colleges and universities are experiencing an enrollment explosion that will double our campus population by 1975.

## JUST REMINISCING

Items Taken from the Files of The Chelsea Standard

### 4 Years Ago . . .

Thursday, Oct. 8, 1959—

Gerold Carr has been appointed to the office of zoning inspector to succeed John Otto, who resigned.

A total of 75 hunters, with Conservation Officer Donley Boyer, were successful in downing one of the wild dogs which have been raiding flocks of sheep in Sharon township in recent weeks. The hunt was staged Saturday. Another dog escaped after being wounded.

Beginning Sunday, Oct. 11, St. Paul's Evangelical and Reformed church will hold two morning worship services each Sunday—8:15 a.m. and 10:45 a.m.—with Sunday school at 9:30 a.m.

According to a list compiled by Chelsea High School Principal Charles Lane, 33 members of the Class of 1959 are enrolled in advanced training programs in various schools and colleges.

### 14 Years Ago . . .

Thursday, Oct. 13, 1949—

The house at the corner of Park and East Middle St., known as the old Barber place, was moved on Monday to a new location on the south side of Adams St. The last member of the family to own the place, Miss Ella Barber, was born there in 1867. She died Oct. 31, 1940.

Argus, Inc., of Ann Arbor, has suspended operation of the Chelsea branch plant and has no present plans for its future operation. All equipment of the Chelsea plant has been moved to Ann Arbor after operating the Chelsea plant only one year.

More than 500 people attended the service of dedication of the recently-completed wing at the Methodist Home. Chief donors for the cost of the debt-free wing were Mr. and Mrs. Ora Kimball of Hillsdale. The Home, as it now stands, has 145 rooms for residents, a spacious lounge, large dining room, solarium, infirmary and diet kitchen, a library and office and storage space.

The marriage of Jeanne Martin of Ann Arbor and Lovell Scripser of Chelsea took place Oct. 7 at Angola, Ind. Attendants were Mr. and Mrs. Alton Gieske.

The Kiwanis club is making arrangements to have a Halloween party for children of the community. Tentative plans call for a mass parade of children, costumes, and refreshments.

Most of the members of the specially selected group have had community or professional theatre experience as well as educational backgrounds in drama.

Population explosion? Michigan colleges and universities are experiencing an enrollment explosion that will double our campus population by 1975.

### 24 Years Ago . . .

Thursday, Oct. 12, 1939—

The marriage of Jeanne Martin of Ann Arbor and Lovell Scripser of Chelsea took place Oct. 7 at Angola, Ind. Attendants were Mr. and Mrs. Alton Gieske.

The Kiwanis club is making arrangements to have a Halloween party for children of the community. Tentative plans call for a mass parade of children, costumes, and refreshments.

Most of the members of the specially selected group have had community or professional theatre experience as well as educational backgrounds in drama.

Population explosion? Michigan colleges and universities are experiencing an enrollment explosion that will double our campus population by 1975.

Tenure, as defined by the M.E.A., is the principle of having probationary periods of employment followed by assured positions as long as a teacher continues to give satisfactory service.

The association's argument for the law included that good administrative practices are encouraged, comprehensive personnel policies are made desirable, and adequate

Population explosion? Michigan colleges and universities are experiencing an enrollment explosion that will double our campus population by 1975.

Tenure, as defined by the M.E.A., is the principle of having probationary periods of employment followed by assured positions as long as a teacher continues to give satisfactory service.

The association's argument for the law included that good administrative practices are encouraged, comprehensive personnel policies are made desirable, and adequate

Population explosion? Michigan colleges and universities are experiencing an enrollment explosion that will double our campus population by 1975.

Tenure, as defined by the M.E.A., is the principle of having probationary periods of employment followed by assured positions as long as a teacher continues to give satisfactory service.

The association's argument for the law included that good administrative practices are encouraged, comprehensive personnel policies are made desirable, and adequate

Population explosion? Michigan colleges and universities are experiencing an enrollment explosion that will double our campus population by 1975.

Tenure, as defined by the M.E.A., is the principle of having probationary periods of employment followed by assured positions as long as a teacher continues to give satisfactory service.

The association's argument for the law included that good administrative practices are encouraged, comprehensive personnel policies are made desirable, and adequate

Population explosion? Michigan colleges and universities are experiencing an enrollment explosion that will double our campus population by 1975.

Tenure, as defined by the M.E.A., is the principle of having probationary periods of employment followed by assured positions as long as a teacher continues to give satisfactory service.

The association's argument for the law included that good administrative practices are encouraged, comprehensive personnel policies are made desirable, and adequate

Population explosion? Michigan colleges and universities are experiencing an enrollment explosion that will double our campus population by 1975.

Tenure, as defined by the M.E.A., is the principle of having probationary periods of employment followed by assured positions as long as a teacher continues to give satisfactory service.

The association's argument for the law included that good administrative practices are encouraged, comprehensive personnel policies are made desirable, and adequate

## Area Holsteins Rated 'Excellent'

Brattleboro, Vt. — Gray Sky Bluecup, 1379477, a Bay tored Holstein bull in the herd of George Macomber & Sons, has been classified "Excellent" by the classification program of the Holstein-Friesian Association of America.

This highly select designation applied only to animals scored 90 or more of the 100 points used for type last year, only 10 were rated "Excellent."

The Macomber Holstein was the first time during a year classification of the herd by Charles J. Howe, Tunbridge, Vt., official inspector on the staff of the national Holstein organization, scored 93 points. Animals scored "Excellent" in previous programs are not included in this list.

A registered Holstein cow, Skokie Supreme, #899088, in the herd of Elton Frey, Ann Arbor, Mich., has also been officially classified "Excellent." She scored 90 points.

## COMING EVENTS IN MICHIGAN

OCTOBER

4-6—AuSable River Valley Race, Grayling-Oscoda.

5—Red Flannel Festival, Cedar Springs.

5-6—Bear Hunt, Lake City.

5-6—Travel Trailer Rally, Hiram.

5-6—Women's National Deer Hunt, Kalkaska.

7-8—U. P. Potato Show, Marquette.

10-12—Marquette County Harvest Festival, Marquette.

11-12—Apple Festival, Belding.

11-13—National Food and Nutrition Art Show, Clio-Hall, Detroit.

12—Harvest of Hallowm, Escanaba.

14-18—Midwest Antiques Festival, Greenfield Village and Henry Ford Museum, Dearborn.

18-19—Luce County Fall Harvest Festival, Newberry.

21—Small game hunting season opens in Southern Lower Peninsula.

23—Houghton County Fair, Lake Linden.

25-27—Antique Show, Flint and more, Flint.

31-Nov. 2—Sno-Sho, Grand Rapids.

## NOVEMBER

9-24—Western Upper Peninsula Deer Season.

15-30—Michigan Deer Hunting Season.

15-30—Buck Derby, Whitewater.

23-24—Muzzle Loaders Deer Hunt, Manistee.

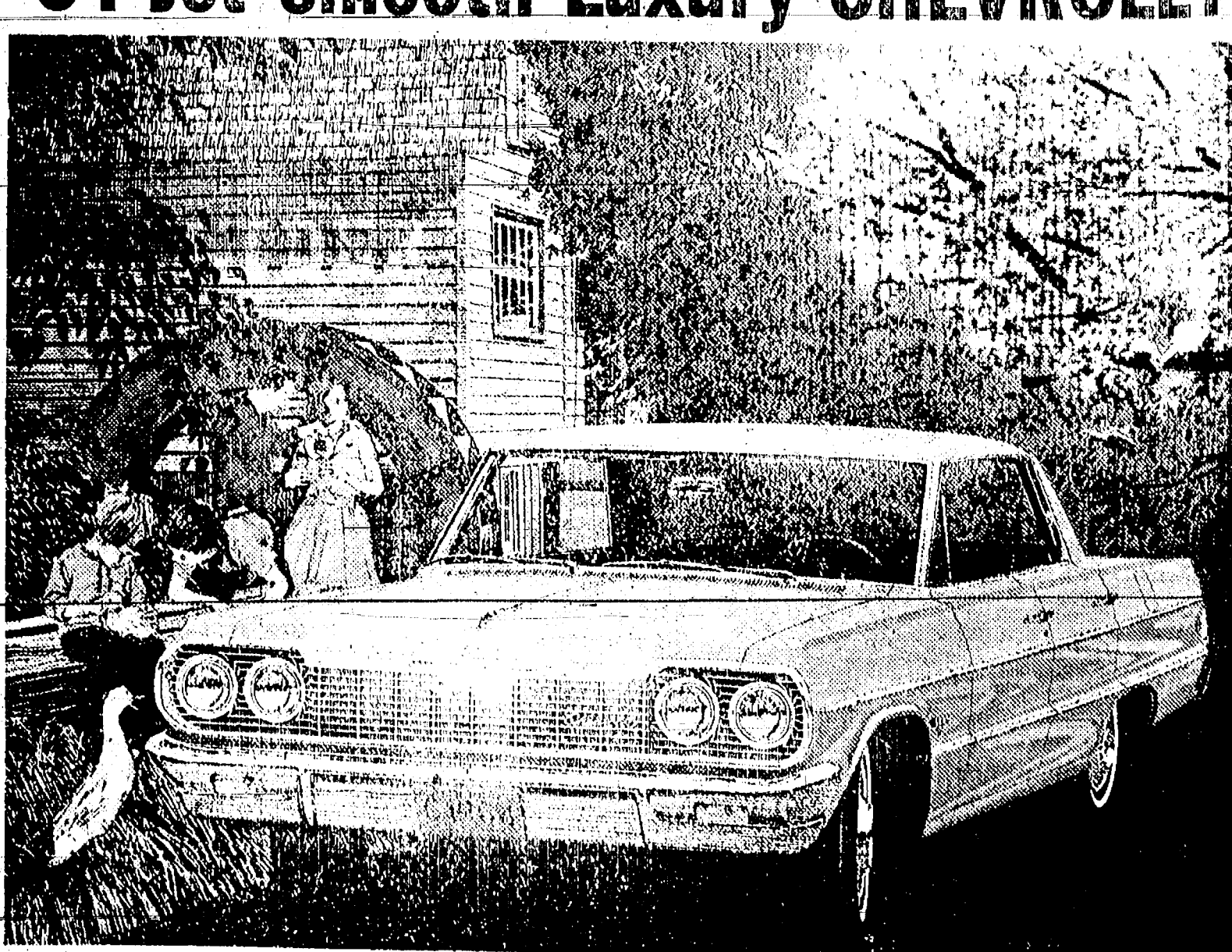
## DECEMBER

Dec. 7-Jan. 5—Annual Christmas Exposition, Greenfield Village and Henry Ford Museum, Dearborn.

8—Northern Michigan Rifle Trophy Shoot, Manistee.

\*See Michigan Game-Law Digest for specific hunting information—available at license dealers.

## '64 Jet-smooth Luxury CHEVROLET



Besides looks, ride and power—what's so special about it?

(It's so reasonably priced)

Kind of leaves the high-priced cars some explaining to do, wouldn't you say? Long and luxurious—with a frosh-christened look. Richer roomy interiors with subtle new upholstery in the new Chevrolet Impala Super Sport Series.

A choice of seven engines, no less, with output all the way up to 425 hp. And a choice of four smooth transmissions to go with them. And underlying it all, the opulent feel of this '64 Chevrolet's Jet-smooth ride.

Matter of fact, the most noticeable difference between this beautiful new 1964 Chevrolet and the high-priced cars is the price itself. Let your dealer show you how much luxury that reasonable Chevrolet price now buys.

See five entirely different lines of cars at your Chevrolet Showroom—CHEVROLET, CHEVELLE, CHEVY II, CORVAIR & CORVETTE

**SPAULDING CHEVROLET SALES & SERVICE**  
 CHELSEA, MICHIGAN

## FARMERS

FOR TOP PRICES  
 FOR YOUR LIVESTOCK  
 Consign to the

**Howell Livestock Auction**

We have buyers for all kinds of livestock. Sale every Monday at 2 p.m.  
 Phone 1089 Howell  
 For Any Information



## County 4-H Club Members Welcome Exchange Student from Uruguay

One of the newest 4-H projects "Passport to the World." It is a people-to-people program developed to give a framework for better international understanding. Washtenaw county 4-H club members will have an outstanding opportunity to learn about another country this year because of the fact that Alma Diane Rozas, of Uruguay is making her home during the year with Beverly Windell, a 4-H club member. Beverly is the daughter of Mr. and Mrs. James Windell of Chelsea. Miss Rozas is in the United States under the sponsorship of the "Youth for Understanding" of the Michigan Council of Churches and is attending Chelsea High school for the year.

Already Miss Rozas is being asked to participate in 4-H activities. Her latest invitation is to attend the District 4-H Junior Leader School at Camp Kott, near Cadillac, Oct. 17-19, along with 10 other Michigan 4-H members. National 4-H Club Week is a fitting time for Washtenaw county 4-H members to say, "Welcome" to a guest from South America.

## Uniform Size Chops

When selecting lamb chops, remember two rules of thumb—make sure that every chop in a package is the same thickness. If not, one or even two of the chops in the package might be wasted by overcooking. Second, to be sure of the best flavor, juiciness and total enjoyment of this delicious meat, select lamb chops which have been cut at least one inch thick—this rule includes all other chops, too. With this rule of thumb you'll discover the benefit of being a wise buyer of meat.

## Burnable Trash Not Included in Garbage Pickup

Chelsea residents serviced under the village garbage and rubbish pick-up contract are reminded that there are definite rules and regulations specified in the contract as to what constitutes garbage and rubbish eligible for pick-up.

Notices are being printed and will be included in the next monthly village light and water department bills sent to customers. The notices will give precise instructions as to what is permissible to include in garbage receptacles and what is to be put into rubbish receptacles.

It is stressed that nothing combustible (burnable) is permitted in the material for rubbish pickup. Waste paper, yard rakes, stumps, garden refuse, etc., must be disposed of by residents themselves. Only tin cans, bottles and similar articles may be put out for pick-up under the contract.

Regulations regarding garbage require that the garbage be wrapped before depositing it in the garbage can.

William Terns, the contractor for garbage and rubbish pick-up reported to village officials yesterday that there has been widespread disregard of the rules and regulations.

It was suggested that if residents are uncertain as to what may be included they should call the Light and Water office until such time as the printed notices are received.

Michigan ranks seventh among the states in population in the 1960 federal census with a total of almost eight million people: 7,829,194.

## AGRICULTURE In Action

by M. L. Voss

### ★ Tax Reform

Although billed as an "Administration" program, the Romney tax proposals are actually far more bipartisan than many would believe. Except for a few variations, the tax-reform package presented by Michigan's Governor to the special session of the legislature, is much the same as was unsuccessfully promoted two years ago by then governor, Swainson. At that time, the reforms were torpedoed by intense partisanship, the same force that could kill off the current tax reform package.

The endorsement of the new program by leading Democrats, such as former Governor Swainson, Attorney General Kelley, is one of the more hopeful signs that such extreme partisanship is dead.

How are farmers reacting to the tax package? Many farm leaders appear delighted, in that if all the proposals are adopted, property tax costs would definitely drop. Some, such as Robert Smith, associate legislative counsel for the Michigan Farm Bureau, predict as much as 15 percent drop.

Farmers pay more property taxes than "anybody"—and relief to property taxes has been a major part of all recent farm tax reform platforms.

Michigan farmers have less income than "anybody" too. So the prospect of an income tax, especially if property taxes drop, is not especially frightening. Michigan farmers currently have average gross incomes of \$8,980, compared to \$11,000 nationally. Of this gross income, our farmers net a bit less than \$2,000 annually, compared to almost double that amount nationally. The cost-squeeze is harder on farms with smaller production potential, as are most common in Michigan.

But here's a catch. Michigan farmers often take jobs in "town"—about half of those who farm in this state have off-the-farm jobs to jack up their incomes. Thus a city-income tax is greeted with really mixed reactions. However, under the Romney proposals, cities would be able to keep only half of the allowable 1 percent city income tax, with the other half returnable to the community in which the farmer lives.

Of course, farmers will be left along with townspeople by any sales-tax relief on food and drugs. Most farmers buy nearly as much of their daily food as do those who live in cities. All in all, it appears that most Michigan farmers can't help but endorse the proposed tax reform.

## 4-H Calendar

This week's 4-H club calendar includes the following:

- Oct. 2, Wednesday—Meeting for all 4-H leaders to introduce the new 4-H Leaders Manual. 8:00 p.m., Rural Activities Center, Salline-Ann Arbor Rd.
- Oct. 5, Saturday—Leaders meeting for leaders from seven counties. Miss Dorothy Emerson, speaker. Howell Armory Building, Howell, 9:30 a.m.-9:00 p.m.
- Oct. 5, Saturday—County Junior Leaders Club hayride party. 8:00 p.m. Meet at Grace Kishmaul's, Freer Rd, Chelsea.
- Oct. 7, Monday—4-H Council meeting, selection of awards, 8:00 p.m. County Building, Ann Arbor.
- Oct. 9, Wednesday—Handicraft leaders meeting. To determine exhibit policy. 8:30 p.m., County Building.

## IT'S HERE A DIFFERENT AUTO POLICY!

You've never had insurance like this. If you have a good safe driving record, you can qualify for this new and different policy which rewards safe drivers.

- LOWEST POSSIBLE COST
- FURTHER ANNUAL DISCOUNTS
- AUTOMATIC QUARTERLY PAYMENTS
- TOP-QUALITY PROTECTION

AND

This GOLD KEY AUTO POLICY is backed by The Home Insurance Company's fast, fair national claims service.

To get all the money-saving facts—and further information on additional features including a 5-year continuation agreement, phone or come in today.

**GOLD KEY AUTO POLICY**

**A. D. MAYER AGENCY**

"Insurance for Every Need"

Rm. GR 5-4201

115 Park St. Chelsea, Mich

Phone: Office 479-3061

## Personal Notes

Challers Wednesday evening at the home of Mr. and Mrs. E. M. Elsom were Mr. and Mrs. William Elsom of Ann Arbor, Mr. and Mrs. Waldo Elsom of Ann Arbor, were Saturday afternoon visitors.

Mr. and Mrs. Thomas Bust spent four days the past week at Beaver Dam and Milwaukee, Wis. At Beaver Dam they visited the

Monarch Stove Co. and at Milwaukee they attended a showing of the new 1964 models of tractors at the Simplicity Manufacturing Co. Bust's Chelsea Hardware store is an agency here for both products.

Mrs. Florence O'Hara returned Wednesday night of last week after spending a week in Toledo, O., as the guest of her daughter and family, Mr. and Mrs. Robert Vanderkelen and children.

**TURKEY SHOOT**

**Dexter American Legion**

**Big Turkey Shoot**

**HILL CREEK STORE - DEXTER, MICH.**

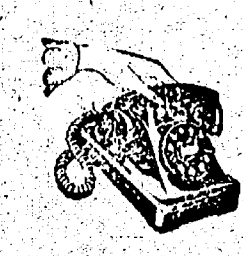
**Sept. 29, Oct. 6 & 13**

**10 a.m. to 5 p.m.**

**Any Gauge Shotgun and 22 Caliber Rifles**

**• PRIZES •**

**TURKEYS or HAMS**



Your Wunda Weve Dealer is as near as your telephone. Special savings offered now through Oct. 8.

**MERKEL BROTHERS**

BEAUTIFUL HOME FURNISHINGS

**Everybody out of the rut ...the '64 Buicks are here!**



New Wildcat: Wildest, sportiest yet. Turbulent styling, 300 hp. Hot new Formula V wheels (optional at extra cost).



Buick Special: New longer wheelbase, safety box frame, roomier body. Still low priced.



Buick Skylark: A very personal car with a flair for action. Now in 3 models.



Buick LeSabre: Stunning new looks, new gas-saving engine. Probably 1964's best full-size value.



Buick Electra: Most luxurious Buick. Splendidly contemporary in taste and performance.

Our happiest problem for '64 was: how to beat a winner? According to thousands of owners, the 1963 models just about had it made in all departments. But when your name is Buick—you just don't rest on your laurels. You keep pushing to make a great car greater.

So... the '64 Buicks are new—but new. New engines, V-6 or V-8 (you'll like their new gas economy), new, smoother, extra-cost option, Super Turbine Transmissions (and who, but Buick, would build in an altitude compensator?). Youngest looking Fisher Bodies in town! Visit a showroom, sit in any one of the new Buicks, and practice this short easy line: "My Buick." Sounds good, doesn't it?

SEE YOUR LOCAL AUTHORIZED BUICK DEALER. AUTHORIZED BUICK DEALERS IN THIS AREA:

**DANIELS MOTOR SALES, INC., 208 Railroad St.**

**Prepare the Family For Cold Weather . .**

**It's apt to be Just Around the Corner.**

**Babywear**

**For Winter Comfort . . .**

New arrivals include Blankets, Sleeping Garments, Dresses and Suits, T-Shirts, Creepers, Overalls, etc.—See them.

**Keep Your Boys and Girls Warm in Comfortable Sweat Shirts**

**\$1.49 to \$2.98**

Pullover and Zip Fronts, Hoods and Crew Necks. Lots of colors to choose from.

**Boy's and Girl's Snow Suits**

**\$8.98 to \$12.98**

New fabrics, new linings, new colors. Included are new Stretch Pant Styles. Sizes 1 yr. to 6.

**BOYS' SWEATERS**

**Cardigans and Slip-overs**

**\$4.98 to \$7.98**

Smart new bulky woolens and orlons. Ski Types as well as Coat Styles. New Colors. Sizes 6 to 20.

**Boy's and Girl's Nylon Parkas**

**\$5.98**

Warm, long wearing nylons. Smart new colors. Plain and Plaids. Sizes 6 to 16.

**BOY'S SLACKS**

Corluroy and Fancy Wash Fabrics.

**\$2.98 and \$3.98**

New Models, New Colors. Sizes 6 to 18.

**ANDERSON'S**



Just  
Phone  
GR 5-3581

# TO BUY SELL TRADE RENT HIRE HELP

read the Want Ads

Ads  
Taken  
Til 5 p.m.  
Tuesday

## WANT ADS

## The Chelsea Standard

## WANT AD RATES

PAID IN ADVANCE—All regular advertisements, 50 cents for 10 words or less, each insertion. Count each figure as a word. For more than 25 words add 2 cents per word for each insertion. "Blind" ads or box numbers, add 50c extra per insertion. CHARGE RATES—Same as each in advance, with 15 cents bookkeeping charge if not paid before 5 p.m. Tuesday preceding publication. Pay in advance, send cash or stamps and save 10 cents. DISPLAY WANT ADS—Rate, \$1.10 per column inch, single column, 10 lines only. 2-point and 4-point lead type only. No borders or boldface type. COPY DEADLINE—5 p.m. Tuesday, week of publication.

CHICKEN BARBECUE sponsored by Chelsea Jaycees Sunday, Oct. 13, at Pierce Park. Bring the family. Carry-overs available. Serving begins at noon. \$1.50.

PONTIAC—We still have a few good trunk-ponties to let out in exchange for board. Carroll Ordway. GR 9-2455.

Fall Clean-Up Sale on all our Mobile Homes new and used

8', 10' and 12' wide, up to 60' long 40 to choose from. We trade for anything of value. On the spot financing.

R & H Mobile Homes 2939 E. Michigan, Jackson Phone ST 3-1418

FOR SALE—A wide variety of fire extinguishers for the home, car, or business. See them at the open house of Chelsea Fire Dept. Saturday, Oct. 12.

LOST—Last Wednesday evening a quantity of clothing at the Wash 'n Dry Laundromat. Reward, GR 9-5687.

## FOR SALE

New 3-bedroom half moon Cape Cod near Half Moon Lake on Hanken county road. Two baths, double fireplace, garage, built-ins. Chelsea school district. Open daily. Seeing Noah Heights Subdivision.

## BUILDER

E. A. WIGLE Phone 479-4471

TAKE YOUR USEABLE discards to Eisenmann's, 320 East St. for Goodwill Industries of Jackson who can make good use of them in their work. If pick-up is desired call GR 9-5171. Truck will be in Chelsea Oct. 15.

For the Best in POLE BUILDINGS Be sure to see "SMILEY" Call or Write

JOHN LIVERMORE Gregory, ALPine 6-2827

WANTED—All grades of hay. Whitley Matheny, care of Sylvan Hotel.

COMING! Jaycees' annual chicken barbecue at Pierce Park Sunday, Oct. 13. Expertly barbecued by experienced chefs. \$1.50. Efficient service. No long waits.

FOR RENT—3-room furnished upstairs apartment. GR 9-1092.

NAPOLEON LIVESTOCK COMMISSION CO. Phone KE 6-4201

Auction every Monday, 2 p.m. We have buyers for all kinds of livestock. Order of sale: feeder pigs, dairy cattle, feeder cattle, sheep, calves, butcher cattle, butcher hogs.

COMPLETE MARKETING SERVICE For trucking to our sale call us or your local trucker. Livestock is insured from the time it is loaded at your farm until it leaves our barn.

## WANT ADS

HELP WANTED. Male or Female—Would you like to turn your spare time into cash? Opportunity for men or women to supply demand for well known Rayleigh Products in Chelsea. Full details without obligation. Write Rayleigh Dept. MCJ-751-51, Freeport, Ill.

WANTED—Reliable woman to care for six-month-old baby two days each week. Call GR 8135.

ROOM FOR RENT—Gentleman preferred. Breakfast served and lunch packed if desired. Call GR 9-6708.

FOR SALE—4-bedroom home located on 60x172 ft lot in heart of village. Automatic gas heat, new 2-car garage. For particulars ph. GR 5-8205 or 479-3541.

## FOR SALE

RANCH TYPE home on 2 lots, plus garage. Gas heat.

HOME with basement, 2 bedrooms. See this one for price.

3 ACRES with home, 2 miles out. Listings of all kinds wanted.

KERN REAL ESTATE Phone 475-8568

FOR SALE—Female beagle, 1-year-old has been run. GR 9-2397.

FOR SALE—Half-English and Half-German short haired pointer, 4 years old. \$200. GR 9-7403.

BUY OR SELL COINS—Also have coin supplies. Lake's Coin Center, at Sylvan Lanes, 114 N. Main St. GR 5-8980.

## IMMEDIATE POSSESSION

6-Room Ranch Home

Located At 129 Wilkinson Street

Drive By And If Interested PHONE

A. Pommerening, Broker 479-4491

Or call owner at GR 9-5581

WOULD LIKE someone to care for two children in my home. May live-in. GR 9-7403.

FOR SALE—Used fryers. Guarnitucci, from \$39.95. Frigid Products. Phone GR 9-0651.

## MUM PLANTS

Hundreds to choose from \$3.00 and up

Chelsea Greenhouse 7010 Lingane Rd. Phone 479-6071

FOR SALE—3 bedroom ranch-type home on three acres. Living room with fireplace, dining room, modern kitchen, 2-car garage. Call GR 5-8219.

UM-M-M-M! Deliciously barbecued chicken dinners at Pierce Park Sunday, Oct. 13. Serving begins at noon. Sponsored by Jaycees in cooperation with C. of C. color tour.

FOR SALE BY OWNER—Approx. 10-acre building site on Wacker Rd., 3 miles north of Chelsea. Phone GR 9-1831.

FOR SALE—'58 Chevrolet. Good transportation. GR 9-5372.

DATES OF Woman's club fall rummage sale at Sylvan Town Hall—Friday and Saturday, Oct. 18-19.

## Septic Tanks

And Drain Fields

INSTALLED TO COUNTY CODE SPECIFICATIONS

Septic tanks from 300 gal. to 2,000 gal. available for prompt installation.

HILLTOP PLUMBING BOB SHEARS 201 S. Main Phone 479-3851

## WANT ADS

FOR SALE—Honey, comb and extracted. Alfred Eisenman. 11890 Dexter-Chelsea Rd.

RINGS FOR SALE—Set of Columbia Tru-Eit diamond engagement ring and wedding band. Like new. Phone 475-8342 after 6 or 475-8768.

WANTED—By middle aged couple, small apartment with bath. Must be on first floor. Call 475-8996.

FOR RENT—One-bedroom apartment at Cavanaugh Lake. Adults preferred. Call GR 9-4492.

FOR TRACTORS and equipment. Also New Holland machinery. Sales and service. Cobb & Schreier. Stockbridge. Phone ULYSSES 1-4525.

## G. G. HOPPER

Painting & Decorating Building Contractors Phone GR 5-5581 Gregory 498-2148

FOR RENT—Sleeping room with private entrance. Parking space available. 163 Orchard St.

PIANO TEACHER WANTED for a beginner. One lesson per week. Call GR 9-7096.

FOR SALE—Upright piano and two upholstered chairs. All in good condition. Phone 479-7137.

FOR SALE—Two-wheel trailer in good condition. Call GR 5-5044.

## A-1 USED CARS

'61 Chev 2-door

'60 Valiant Wagon

'59 Ford Sedan

'59 Chev 4-door

'58 Ford Wagon

'58 Olds Hardtop

'58 Mercury 4-door

'57 Pontiac

'50 Plymouth

## TRANSPORTATION

'57 Chev Panel

'55 Ford Pickup

## TRUCKS

2 BIG LOTS

Corner of Orchard and S. Main and 222 S. Main St.

25 months Guarantee

Easy Financing Arranged

GR 5-3281

PALMER MOTOR SALES Over 50 Years of Service

FOR SALE—Half black and tan and half white pups, seven weeks old. 479-6548.

FOR SALE—Registered Hampshire rams, lambs and yearlings, also ewe lambs. George Liebeck, 10953 Parks Rd. Phone Munith 596-2741.

## CLEARING OUT

Ornamental Evergreens YEW, PITCHERS, AMERICAN ARBORVITAE

Also miscellaneous trees

Bring your own containers and shovels.

## Fisher's Nursery

280 Freer Rd. Call after 5 or week-ends.

FOR SALE—Seven white geese, \$5 each; Pekin ducks, \$2 each; rabbits, live or dressed. Call after 5 at 15863 Farnsworth Rd.

TOY DRIVE—Chelsea Jaycees Auxiliary will be paid to accept your used-toy donations until Oct. 31. Please place on the porch at 138 Orchard.

FOR SALE—1959 4-door Olds hardtop; new tires, original owner, excellent condition. Phone 426-8474.

FOR SALE—12-foot camp trailer 1958 model. Ideal for deer hunting. Sleeps four. Gas lights and cooking. Phone GR 9-1815 or GR 9-7381.

## National Lead

UTILITY PAINT

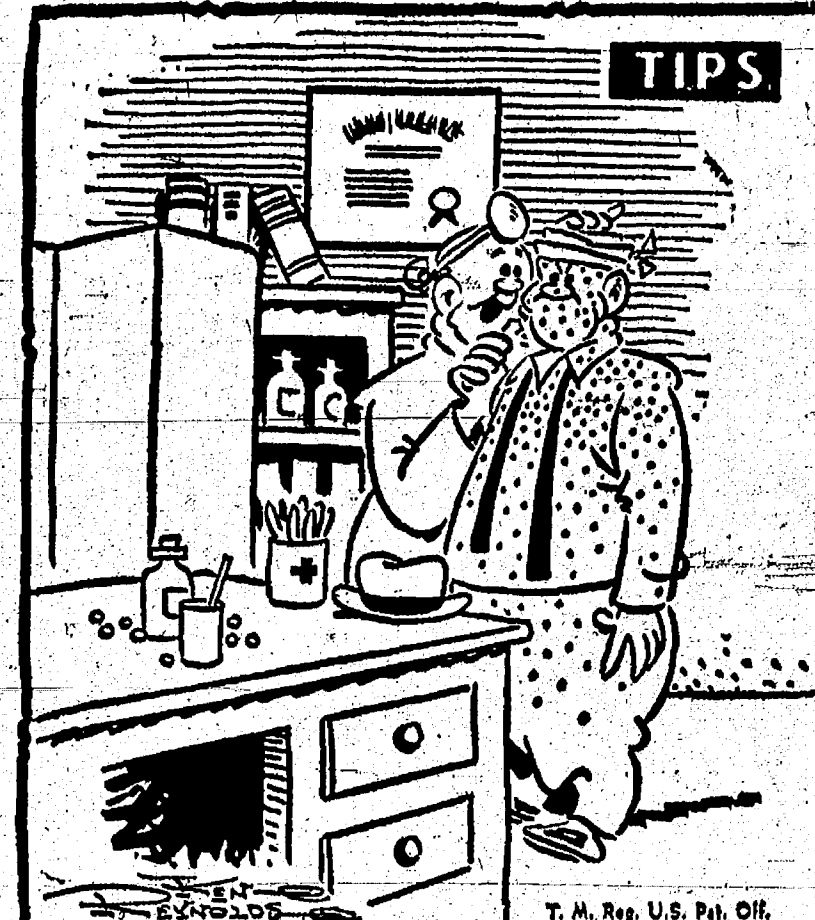
Made from salvage paints due to overgrinds, damaged containers, etc. Use National Utility Paint on: barns, garages, tool sheds, warehouses, outbuildings, roofs of metal or wood, industrial bldgs., cottages, general utility use. 4 colors: light gray, green, medium gray, brown. This high quality paint weighs 12 1/2 pounds per gallon. Sells for only \$3.95.

## MERKEL BROS.

If it's a job for Bottled Gas IT'S A JOB FOR SHELLANE

Product of the Shell Oil Company

HILLTOP PLUMBING BOB SHEARS 201 S. Main Ph. 479-3851



"The same thing happened to me last year—I got my kid a BB gun in the Standard Want Ads, too!"

## WANT ADS

FOR SALE—Shropshire, Blacktop and Columbia Rams. GR 9-5755.

WANTED—Part-time housework two days a week. Call after 5 p.m. GR 9-5641.

YOUNG MAN wants daily ride to Ann Arbor. Working hours a.m.-3:30 p.m. Call GR 5-4171.

MUM PLANTS Hundreds to choose from \$3.00 and up

Chelsea Greenhouse 7010 Lingane Rd. Phone 479-6071

FOR SALE—Bird dog, Weimaraner 2 1/2 years old, good hunter and retriever; beagle pup 6 months old; Winchester deer rifle .308 calibre, like new, priced reasonably. Call GR 5-8439 after 5:30 p.m.

FOR SALE—Fireplace set including basket, poker, shovel, broom and stand. Black with brass handles. Call 475-5501.

FOR SALE—Half black and tan and half white pups, seven weeks old. 479-6548.

FOR SALE—Registered Hampshire rams, lambs and yearlings, also ewe lambs. George Liebeck, 10953 Parks Rd. Phone Munith 596-2741.

Register your boys, 8 to 11 for the Punt, Pass & Kick Contest at Palmer Motor Sales

THAT GUITAR or banjo in your attic could bring you cash from collector. Call 682-0507 between 5:30 and 7 p.m.

FOR RENT—Unfurnished upstairs apartment in Chelsea. 4 rooms and bath, half-block from business district. Available now. Adults with 1 small child, acceptable. GR 9-3013.

AVAILABLE AUG. 20—4-bedroom home for rent. Call Kern Real Estate. Phone 475-8653.

FOR RENT—Clean, attractive, modern country home, 6 rooms, immediate occupancy. Private lake. Good hunting. Near golf course. 12 miles west of Chelsea. Phone evenings, Detroit VE 7-1542.

SPORTSMEN!

\* Shells

\* Guns

\* Gun Cleaning Kits

\* Gloves & Caps

\* Rain Parka Jackets

\* Pouches

\* Licenses

Chelsea Hardware GR 9-6311

ONE-HALF BLOCK from business district. 6 rooms and bath in excellent condition. Modern kitchen with garbage disposal. Large living and dining rooms. 1 bedroom down, 2 up. Large basement with wash room and gas furnace. Screen porch. Good lot. Price: \$10,500. Part down, balance like rent.

ONE ACRE LOT on Freer Road, priced to sell.

MODERN, 2-bedroom, lake home, sleeps six. Oil heat, utility room, garage. Price \$8,500. \$1,500 down, owner will finance balance.

MODERN COUNTRY HOME on all-weather road. One bedroom down and two on second floor. Modern kitchen and bath, dining room, large living room, enclosed porch, large screened front porch, shower furnace, 2-car garage, workshop. Maple stoker. Lot 100x200. Large garden. Price: \$11,000.

Have buyer for a 2 or 3-bedroom Chelsea Home.

SOLD OUT of farms. List your property with Miller fast, efficient service.

R. D. MILLER REAL ESTATE BROKER

Office: 15775 Cavanaugh Lake Road Post Office Box 388 Chelsea, Michigan Phone: GR 9-5892

## WANT ADS

FOR SALE—Rabbits. Live or dressed. Call 479-4415.

WANTED TO BUY—Hay of all grades. Contact our representative at the Sylvan Hotel, Chelsea, or write us direct—Art Callari Hay Co., Upper Sandusky, Ohio.

FOR RENT—4-room furnished apartment, including all utilities. Call GR 5-8588.

APPLIES FOR SALE—Pippins, Kings, Snow, Spy and Ida Reds. Monday through Saturdays, E. Haininger, 2577 N. Lima Center Rd. Phone GR 9-1810.

George's Shoe Repair Shop

2nd Floor above Hilltop Plumbing, 106 Park St.

Half Soles & Heels stretch shoes, dye

Monday-Wednesday-Thursday 8 a.m. to 6 p.m.

Friday—8 a.m. to 9 p.m.

Saturday—8 a.m. to 5 p.m.

FOR SALE—1959 4-door Olds hardtop, new tires, original owner, excellent condition. Phone 426-8474.

REAL ESTATE FOR SALE

YOU PAY 1/3 THE PAYMENTS—The tenants pay the other 2/3. Just \$1500 moves you into 3 bedroom first floor apartment, balance less than you now pay in rent. Phone me for details.

REAL HOMEY—Carpeted living room and diningroom. Large kitchen, 2 baths, full basement, 1 1/2 car garage.

READY TO MOVE IN—Neat 2 bedroom home with full basement, 2 car garage. Blacktop driveway, gas heat. Easily financed.

3 BEDROOM COUNTRY HOME—Barn, chicken house. Near Waterloo Recreation land. Ideal if you like to ride or if you just like country living.

LARGE OLDER HOME—Gas heat, partly hardwood floors. Needs some work. Reasonably priced. Will finance.

CHELSEA WOOD BROKER 640 Flanders St. Phone GR 9-4603

## - FOR SALE -

ONE-HALF BLOCK from business district. 6 rooms and bath in excellent condition. Modern kitchen with garbage disposal. Large living and dining rooms. 1 bedroom down, 2 up. Large basement with wash room and gas furnace. Screen porch. Good lot. Price: \$10,500. Part down, balance like rent.

ONE ACRE LOT on Freer Road, priced to sell.

MODERN, 2-bedroom, lake home, sleeps six. Oil heat, utility room, garage. Price \$8,500. \$1,500 down, owner will finance balance.

MODERN COUNTRY HOME on all-weather road. One bedroom down and two on second floor. Modern kitchen and bath, dining room, large living room, enclosed porch, large screened front porch, shower furnace, 2-car garage, workshop. Maple stoker. Lot 100x200. Large garden. Price: \$11,000.

Have buyer for a 2 or 3-bedroom Chelsea Home.

SOLD OUT of farms. List your property with Miller fast, efficient service.

R. D. MILLER REAL ESTATE BROKER

Office: 15775 Cavanaugh Lake Road Post Office Box 388 Chelsea, Michigan Phone: GR 9-5892

## WANT ADS

FOR SALE—New sleeper trailers, \$405. Coach pickup (camper), \$505. Champion Trailer Sales, 225 N. Summit St., Ypsilanti. 477-8-8477 and HU 2-8217.

FOR SALE—4-length brownish-black Mouton (processed lamb) fur coat, lined with acetate satin, fur coat, lined with acetate satin. Size 16. 479-2073.

FOR SALE—1958 Mercury 2 door hardtop, v-8, stick shift. Body and engine in good condition. GR 5-8191 after 4:00.

Fall Clearance On all power lawn and garden equipment. Priced to give you worthwhile savings.

Chelsea Hardware GR 9-6311

FOR RENT—Modern farm home, now available. Write 208 Dwight Bldg., Jackson, Mich. 14

I CAN TAKE 1 more additional ironing; also an occasional one and shirts. Phone 475-8981. Clara Wellhoff.

ALLSTATE INSURANCE HOME - PERSONAL COMMERCIAL - AUTO - BOAT

N. H. MILES, Agent Phone GR 5-8834 Call evenings or week-ends

FOR RENT—DOLLAR SAVINGS. Be sure and see before you buy any new or used car. Palmer Motor Sales, Inc. Your Ford Dealer for over 50 years.

ALCHOLICS ANONYMOUS - Call 475-5231 or write Box 44.

CLIFF'S WELDING SERVICE 524 1/2 North Main St. (Behind Production Machining). Also, complete portable equipment. Welding, cutting, brazing, pipe thawing.

Phone 475-8781 or GR 5-8252

FOR SALE—Baby seats and miscellaneous baby items. GR 9-5188.

FOR SALE Large ranch style home, 5 miles out on blacktop on 1 1/2 acre lot, 3 bedrooms and den. Lake frontage. Many extras.

Phone GR 9-5163

FOR SALE—Used dining room suite. Table with six chairs. \$15. Call after 5. 475-8492.

DADS Register your boys, 8 to 11 for the Punt, Pass & Kick Contest at Palmer Motor Sales

FOR RENT—Furnished upstairs apartment suitable for one or two persons. Call 475-8469 or 479-5441 after 5 or week-ends.

REAL ESTATE In or near Chelsea

2 apt. home—near downtown, each with 2 bedrooms, modern kitchen. New low price.

2 apt. home across from Junior High school. Can move in immediately.

2-acre lots at Crooked Lake.

Scripter Real Estate MINNIE LESSER, Broker Phone 475-5974

FOR SALE—Girls' bicycle, 28-inch like new; 2 pair of ladies roller skates, sizes 6 and 10; 1 pair of men's roller skates, size 11; 120 base accordion, good condition; shallow well pump, like new. Phone Manchester GA 8-5421.

Dutch Boy House Paint

\* Looks better

\* Lasts longer

\* Goes further

\* Spreads easier

\* Costs just a little more

MERKEL BROS.

MAUSOLEUMS \* MONUMENTS BRONZE TABLETS \* MARKERS

BECKER MEMORIALS 60



Ads taken 5 p.m. Tuesday DS

WHERE'D HE GO?  
he took that long awaited coffee break and headed where the coffee "sure am good," to

**LLOYD'S Dairy Bar**  
A Darn Good Place to Eat in Chelsea, Mich.  
Open at 6:30 a.m. weekdays

**Fresh Meat Signs**  
Ever wonder how you can be sure that meat is fresh? Freshness is determined by the absence of wetness over the entire surface of the cut—the same thing being true of the tray it is packaged in. Discoloration is not always a sign the cut has been kept too long, as this can be caused by a change in temperature—whether it has suddenly become warmer or colder.

**Bulldogs Romp**  
(Continued from page one)  
down. The last 20 yards were covered by Dick Lauson behind excellent downfield blocking. The conversion attempt was not successful and Chelsea led, 25-0.

The next Chelsea TD was set up by Dick Lauson who intercepted a Manchester pass on the Chelsea 15-yard line and returned it to the Manchester 45. Curt Farley passed to End Mike Schneider to cover the final six yards for the fifth Chelsea touchdown. The conversion attempt was not good and the Bulldogs led, 31-0.

Sophomore Quarterback Mike Kuchmaul engineered two Chelsea scoring drives in the fourth quarter. The first TD came on a 20-yard scamper by Dick Lauson. This score concluded a 60-yard drive. Curt Farley passed to Mike Schneider for the PAT and Chelsea led, 38-0.

The Flying Dutchmen scored midway in the fourth quarter on a three-yard plunge by Halback Ron Scott. The Manchester TD came after a neatly executed pass play covering 60 yards.

The final touchdown for the Chelsea Bulldogs came on a seven-yard run by Mike Tarasov, climaxing a 55-yard drive. The conversion attempt by Lauson was unsuccessful and Chelsea led, 45-0.

Left Halback Paul Huber was a prominent figure in each of the Bulldogs' touchdown drives, although he did not cross the goal line.

"The Bulldogs' offensive line of Carl Walker, Dick McCalla, Warren Porath, Jack Crawford, and Gary Dragan was outstanding in the execution of downfield blocking assignments," stated Coach Jim Bedford after the game.

The defensive work of Jeff Plintoff, John Hand, Owen Wireman, Jeff Spaulding, Warren Porath, and Denny Stoffer was particularly encouraging," he added.

The Chelsea Bulldogs will encounter the Roosevelt Rough Riders at Briggs Field, Ypsilanti, this Saturday evening. It will be homecoming for the Rough Riders. The game will be played Saturday night instead of Friday as previously scheduled.

Michigan has a larger variety of commercial tree species than any other state, and Michigan's forest product industries contribute over \$850 million annually to the over-all economy of the state.

# PTA Reports Almost 100 Attendance

Chelsea Parent-Teacher Association had a total attendance of almost 100 at its first meeting of the 1968-69 school year, held Wednesday evening, Sept. 25, at South Elementary school.

Principal Arthur Schmunk introduced the teachers present and following the business session committees were appointed.

These include the refreshment committees: for October—Mrs. Marilyn Dyson and Mrs. Arleta Alexander; for November—Mrs. Betty Quigg and Mrs. Marian Robertson; for February—Mrs. Nell Rooke and Mrs. Winona Landwehr; for April—Mrs. Elizabeth Herrst and Mrs. Betty Freeman; and for May—Mrs. Ann Hoover.

Appointed as the program committee were three teachers—Don Young, Mrs. Sharon Vonk and Miss Susan Pott; and three fathers of elementary school children—William Herring, Andy Dyson and Don Alexander.

On the publicity committee are Mrs. Rosemary Irving and Mrs. Jan Proctor and on the membership committee are Mrs. Andy Blackwell and Mrs. Lola Macknik.

A social hour followed the business session.

## Personal Notes

Mrs. Russell Alstaetter left Friday for Owosso where she was the guest of her sister, Mrs. Ernest Rupp. On Saturday they both went to Bentley where they were overnight guests of an old school friend, Mrs. Martha Edmonds, and on Sunday attended a homecoming service at the Bentley Methodist church. During the service a memorial Bible was dedicated in honor of the late Mr. and Mrs. Joe W. Taylor, parents of Mrs. Alstaetter and Mrs. Rupp. Mrs. Alstaetter returned to Owosso with her sister and remained until Monday.

Michigan established the state department of health in 1873, and it is one of the oldest and best recognized public health agencies in the world.

## County Hospital Auxiliary Plans Semi-Annual Meet

One of the principal items of business at the September meeting of the executive board of the Washtenaw County Hospital Auxiliary was a discussion of plans for the semi-annual open meeting of the Auxiliary, scheduled for Oct. 16.

Speaker for that meeting is to be the Rev. Virgil Janssen of the Ann Arbor Presbyterian church.

A report was given on a project of the past year—purchase of an artificial leg. It was pointed out that the Rev. Moses Anderson, for whom the leg was purchased is living with a family near Kalamazoo who take him to Cassopolis every Sunday so he can attend church in the town where he was born. He is well and so very happy to be walking again, the report stated.

Announcement was made that the Christmas party at the hospital this year will be sponsored by the Junior Chamber of Commerce Auxiliary. This is described as "a wonderful help to the executive board," however, gifts and donations of all kinds will still be needed and all county groups and individuals are invited to share Christmas with those in the hospital and those in boarding homes. This project, it was noted, has received generous support in past years and the Auxiliary is anticipating the customary co-operation this year.

The Auxiliary was advised that the Needlework Guild of Ann Arbor has offered a sum of money to be used for shoes, slippers or rubbers for any of the patients, either in the hospital or in boarding homes. This is a much appreciated gift and with the cold weather not too far away will bring comfort to the recipients.

A project which is described as "a most necessary addition to the rooms and a comfort to the patients," is installation of closets—six more have been installed in six rooms. The closets provide a small space where patients may keep clothes or small treasures.

Touched upon in other reports were the projects known as Cart Service, Friendly Visitors (in the hospital and boarding homes), work shops, birthday parties, refurbishing of chairs and curtains where needed and the many other services made possible by the interest and gifts of time and money from Auxiliary members and friends throughout the county.

Also mentioned was the fact that relief volunteers for emergencies are needed and those willing to offer their services may leave their name with Mrs. Lois Kerr whose telephone number at Ypsilanti is HU 2-5080.

## 4-H Service Club

(Continued from page one)

The 4-H Service Club, an honorary organization of 150 4-H adults, has financed projects at the Rural Activities Center, sponsoring activities and awards for 4-H. Officers are: Ron Kuhl, president, Manchester; Dick Wheeler, vice-president, Dexter; Nancy McCalla, secretary, Chelsea; and Velma Wiseman, treasurer, Chelsea.

The 4-H program is under the direction of Norman Brown and Mrs. Lora Wise, as county 4-H club agents. The 4-H staff is a part of the Michigan Co-operative Extension Services, with the county office in the County Building, Ann Arbor, and the state Extension offices on the Michigan State University campus.

The state's first permanent settlements were made at Sault Ste. Marie in 1668, and at St. Ignace in 1671 by Father Dablon and Father Marquette.

**W. E. FARRELL SHEET METAL**  
INDUSTRIAL AND GENERAL SHEET METAL WORK  
115 WEST MIDDLE STREET—CHELSEA  
PHONE Greenwood 9-2011

Introducing our new operators,  
**Jean Sweet and Darlene Scruggs**  
who will individually style your hair for only \$3.50  
Includes cutting, shampoo and setting.  
The above offer good for the the next two weeks, Monday thru Friday.

**HOUSE of ORIENT**  
Paul Higgins, owner-operator  
Phone GR 5-8196  
Chelsea, Mich.

Phone GR 5-4141  
or  
GR 5-5141

**24-HOUR AMBULANCE SERVICE**  
214 E. MIDDLE ST. CHELSEA

**BURGHARDT FUNERAL HOME**

**—SPECIALS—**

NO. 2 1/2 CAN DEL MONTE  
Pumpkin . . . 2 for 33c

20-OZ. JAR KRAFT  
Grape Jelly . . . 27c

FARMER PETT'S  
Slicing Bologna . lb. 39c

KEYKO  
Margarine . . 3 lbs. 62c

SCHAFFERS  
Angel Food Cake . . 31c

**KUSTERER'S**  
FOOD MARKET  
DIAL GR 9-3331 WE DELIVER

Need a Room? Let a Standard Want Ad Help!

SEE THIS AMAZING DEMONSTRATION

**WASHABLE!** Even dirty crankcases oil wipes right off!

**IT'S NU-WOOD® VINYL-COATED CEILING TILE**

Here it is—a brand new ceiling tile that wipes clean! To show you how cleanable it is, we spilled oil over the tile. Look how it sponges right off! Perfect for kitchens, playrooms—any room. Acoustical and decorative patterns.

\*Exclusive Nu-Gard Process

ADVERTISED IN LIFE

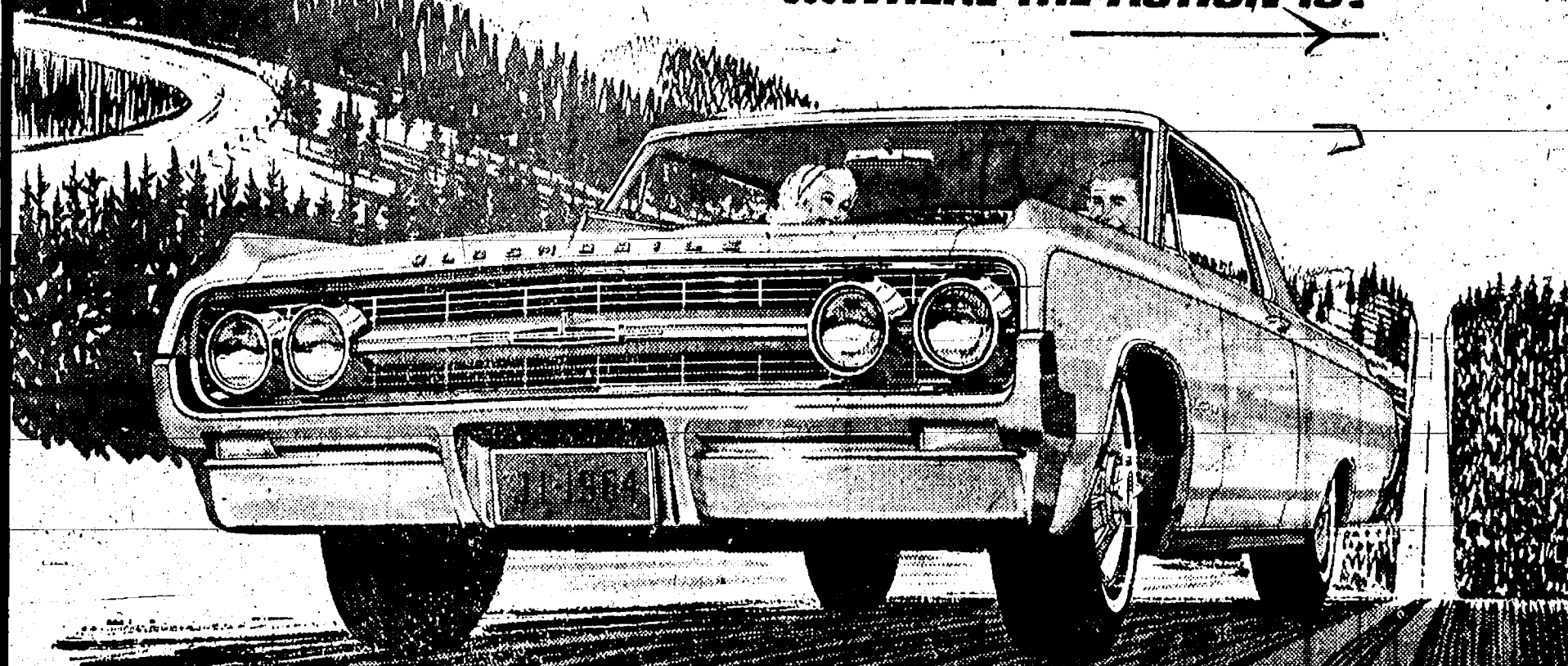
**Finkbeiner Lumber Co.**

Phone Chelsea GR 9-3881

On Old US-12 Just off S. Main St.

MARTIN STEINBACH, Owner

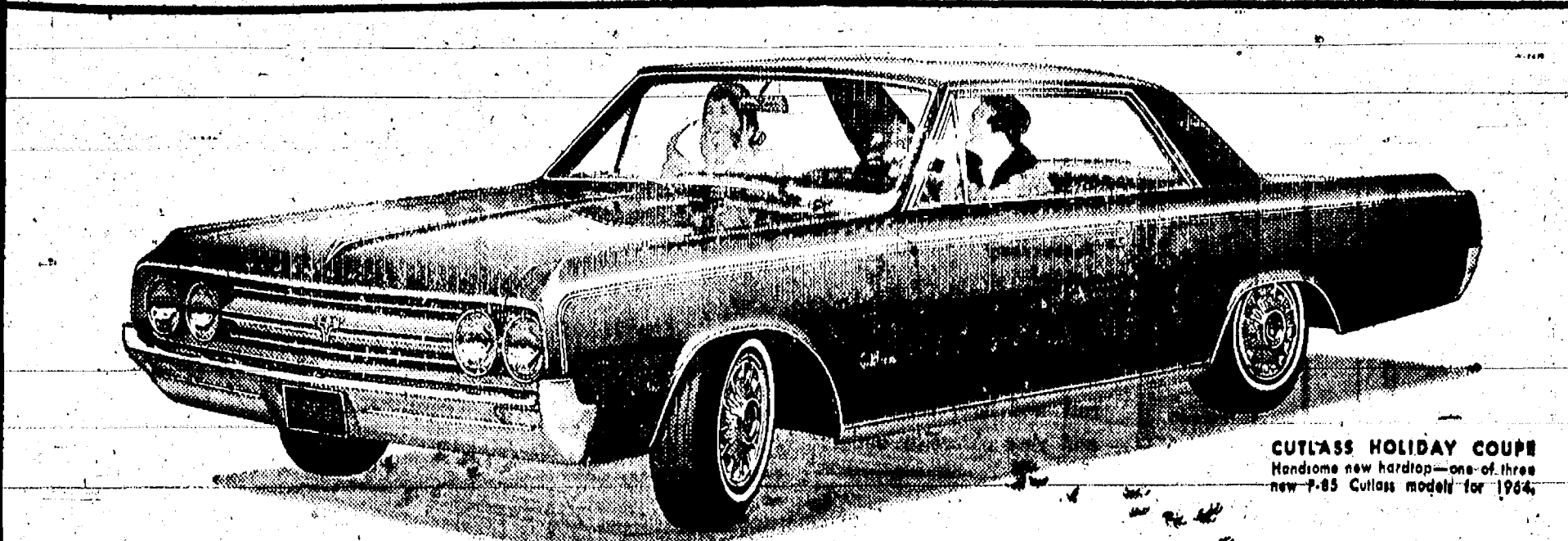
## For '64... New showcase of stars from OLDSMOBILE ...WHERE THE ACTION IS!



TWO NEW NEVER BEFORE OLDSMOBILES!

**Jetstar I** Brilliant new sports coupe in the medium-price class!  
You're looking at Oldsmobile's new high performer—Jetstar I! It's powered by the famous 394-cubic-inch Starfire V-8 Engine, features distinctive roofline... sporty bucket seats... center control console!

**Jetstar 88** Brand new full-size 88 series... at a new lower price!  
Just out—the Jetstar 88 series... companion to the famous high-performing Dynamic and Super 88s! It introduces a brand new 330-cubic-inch Jetfire Rocket V-8. Four sparkling Jetstar 88 models in all!



**CUTLASS HOLIDAY COUPE**  
Hardcore new holiday—one of three new '64 Cutlass models for 1964.

New V-hive of activity! V-8 for action! V-6 for economy!  
Meet the more-for-the-money car of the year—Olds F-85! More roominess, thanks to ten extra inches in length! More action from a new Jetfire Rocket V-8 and smooth new Jetaway Drive! More savings from a brand new Econ-O-Way V-6 Engine! More comfort and roadability from a three-inch-longer wheelbase, rugged Guard-Beam Frame, and a wider stance than ever! Plus more features... more fashion... more of everything! Step into your Oldsmobile Dealer's today and step out in a more-for-the-money F-85! \*Optional at extra cost

New from the nameplate back!  
**OLDS F-85**  
Stepped up in size! Stepped up in performance!

SEE ALL OF THE QUALITY-BUILT '64 OLDSMOBILES: NINETY-EIGHT, STARFIRE, SUPER 88, DYNAMIC 88, JETSTAR I, JETSTAR 88, F-85

VISIT YOUR LOCAL AUTHORIZED OLDSMOBILE QUALITY DEALER!

**DANIELS MOTOR SALES, INC., 208 Railroad St.**

DON'T MISS THE AWARD-WINNING "BARRY MOORE SHOW" • TUESDAY NIGHTS • CBS-TV!

**FAITH**

GUARANTEED  
AUTOMATIC  
WATCH

Specialty priced for only \$49.50  
25 Jewel

—truly the "best buy" in a quality Standard SWISS Jeweled Movement.

A man's fully automatic self-winding Watch, both water and shock resistant, with 17 Jewels, luminous dial and sweep second hand, all stainless steel case, with steel expansion bracelet.

**W. F. Kantlehner**  
JEWELER and OPTOMETRIST  
"Where Gems and Gold Are Fairly Sold"  
102 E. Middle Ph. GR 9-6721



## CHELSEA VILLAGE COUNCIL PROCEEDINGS

Sept. 17, 1963  
Council Room

Regular Session  
This meeting was called to order by Pres. Daniels at 8:00 p.m. Trustees present: Bollinger, Burg, Chapman, Clark, Haselschwardt, and Wood. Invocation by the Rev. John Fall of the Methodist Home staff. The minutes of the Regular Session of Sept. 3, 1963 and the Special Session of Sept. 3, 1963 were read and approved.

A discussion was held regarding the fire contracts presently held with the surrounding townships. No official action was taken at this time.

Bids for a 1964 Pickup truck were received from Palmer Motor Sales, Spaulding Chevrolet Sales and Service, and Bob Buell Dodge, Inc. The bids were as follows:

	6 cyl.	8 cyl.
Palmer Motor Sales	\$4,513.00	\$1,597.00
Spaulding Chevrolet	1,593.50	1,685.50
Bob Buell Dodge, Inc.	1,600.00	1,685.50

Motion by Bollinger, supported by Haselschwardt, to accept the bid of Palmer Motor Sales for one 1964 Pickup Truck, 6 cyl. as per specification in the amount of

\$1,597.00. Roll call: Yeas all. Motion carried.

A request for a variance for the remodeling of a garage located at 625 North Main Street was submitted by Mr. Bruce Walworth. The present garage is located to within two (2) feet of the south property line of the Leon and Kathleen Chapman. A letter stating no objection to the proposed variance was submitted by Mr. and Mrs. Leon Chapman.

Motion by Haselschwardt, supported by Wood, to approve the variance as requested by Mr. Bruce Walworth. Roll call: Yeas all. Motion carried.

**RESOLUTION**  
BE IT RESOLVED AND IT IS HEREBY RESOLVED, that the following speed limits be established on Old U.S. 12 West within the Village limits as in accordance with section 423 of Ordinance No. 45 as follows:

35 miles per hour from the West Village limits, (Wilkinson Street) to the Old Chelsea-Manchester Road. The present speed limit of 25 miles per hour from Chelsea-Manchester Road will be maintained.

Motion by Burg, supported by Wood, to approve the above resolution.

tion as read. Roll call: Yeas all. Motion carried.

Bids for painting of the fire station were received from Alfred Schneider and Raymond Schultz. Motion by Clark, supported by Chapman, to accept the low bid of Raymond Schultz in the amount of \$160.00 for the painting of the fire station. Roll call: Yeas all. Motion carried.

After the bid by Mr. Schultz was accepted, a letter was submitted by Mr. Schultz, and read by Trustee Wood, offering as a public service to paint the exterior of the fire station at no charge, if the Village would supply the paint. It had been decided previously, to conserve money, to omit the painting of the exterior of the building. However, since Mr. Schultz came forth with such a generous offer, it was decided to accept. The council wishes to publicly express appreciation and commend Mr. Schultz.

A discussion was held regarding the village parking lots. Lack of funds available for a possible solution to the parking problem, however, resulted in no action at present.

A discussion was held regarding the Youth Committee activities. Trustee Burg reported that the first official board meeting is scheduled for Thursday, Sept. 19, 1963.

Motion by Chapman, supported by Bollinger, that in order to clear the village tax rolls of a non-reassessable tax, the village clerk is instructed to issue a check to the Village Treasurer in the amount of \$217.50. The amount will be returned to the village as back tax collected. Roll call: Yeas all. Motion carried.

Motion by Wood, supported by Haselschwardt, to authorize payment of \$10,451.50 to the City National Bank of Detroit for Village General Obligation Sewage Disposal System Bonds, to be paid from the Sewerage Treatment Bond and Interest Account. Roll call: Yeas all. Motion carried.

Motion by Burg, supported by Clark, to authorize payment to Peter Kurzy in the amount of \$337.80 for engineering on the village fire station between the dates of April 29, 1963 and Sept. 17, 1963. Roll call: Yeas all. Motion carried.

Motion by Bollinger, supported by Burg, to authorize payment to Peter Kurzy in the amount of \$216.32 for engineering on village street between July 2, 1963 and Sept. 17, 1963. Roll call: Yeas all. Motion carried.

Motion by Chapman, supported by Haselschwardt, to authorize payment to the A.D. Mayer Agency for the second year installment on the village PIP insurance plan. Total premium of \$857.00, \$545.85 of this amount will be paid by the Chelsea Electric and Water Dept. Roll call: Yeas all. Motion carried.

Motion by Bollinger, supported by Wood, to renew the Village comprehensive commercial insurance policy with A. D. Mayer Insurance Agency. Amount \$1032.67. Roll call: Yeas all. Motion carried.

**RESOLUTION**  
Motion by Wood, supported by Bollinger, that the Village Clerk is hereby authorized to make application on behalf of the Village of Chelsea for a permit to place a banner across State Trunkline M-52 between East Middle Street, and Park Street on Sept. 29, 1963 and to remove on or before Oct. 14, 1963, and that the Village of Chelsea will indemnify and save harmless the State of Michigan and the State Highway Commissioner from all claims of every kind arising

out of said placing. Said banner to list the JC Chicken Bar-B-Cue. Roll call: Yeas all. Motion carried.

Motion by Wood, supported by Bollinger, to authorize and direct the clerk to issue checks in payment of bills as submitted. Roll call: Yeas all. Motion carried. General Fund: \$9,880.45. Sewerage Treatment Bond and Interest Account: \$10,451.50.

Motion by Burg, supported by Chapman, to adjourn the meeting. Roll call: Yeas all. Motion carried. Meeting adjourned.

Approved: Oct. 1, 1963.  
Robert L. Daniels, President.  
George Winans, Clerk.

Sept. 17, 1963  
Council Room

**Special Meeting:**  
The Special Meeting was called to order by Pres. Daniels at 7:00 p.m. Trustees present: Bollinger, Burg, Clark, Chapman, Haselschwardt, and Wood.

This special meeting was held to approve the sale of a piece of property now owned by the Village of Chelsea, located directly north of the Central Fibre Co. property.

**RESOLUTION**

BE IT RESOLVED AND IT IS HEREBY RESOLVED, that the real estate hereinafter described as Parcel No. 1, offered for sale pursuant to a resolution adopted by the Chelsea Village Council at a regular meeting held August 6, 1963, be sold and conveyed to Central Fibre Products Company, a Michigan corporation of Chelsea, Mich., for the sum of One Hundred (\$100.00) Dollars and the further consideration of the conveyance by Central Fibre Products Company of the real estate hereinafter described as Parcel No. 2 to the Village of Chelsea, the bid of Central Fibre Products Company being the sole bid received; that the conveyance, when made, will effect a transfer of lands so that the Village's sixty-six (66) foot right-of-way is moved twenty (20) feet north of its present location; that the president and clerk are hereby authorized to convey said Parcel No. 1 to Central Fibre Products Company by quit claim deed, said premises are described as follows:

**PARCEL NO. 1:** Beginning at an iron pipe in the east line of Main Street 217.12 feet north of the northwest corner of Block One (1), Original Plat of the Village of Chelsea; thence east at right angles to Main Street, 217.74 feet; thence north at right angles to the last mentioned line twenty (20) feet; thence west at right angles to the last mentioned line, 217.74 feet to the east line of Main Street; thence south along the east line of Main Street twenty (20) feet to the place of beginning, being a part of the southeast quarter of Section 12, Town Two (2) South, Range Three (3) East, Village of Chelsea, Washtenaw County, Michigan.

**PARCEL NO. 2:** Beginning at an iron pipe in the east line of Main Street 283.12 feet north of the northwest corner of Block One (1), Original Plat of the Village of Chelsea; thence north in the east line of Main Street twenty (20) feet; thence east at right angles to the last mentioned line 217.74 feet; thence south at right angles to the last mentioned line twenty (20) feet; thence south 217.74 feet to the point of beginning, being a part of the northeast quarter of Section Twelve (12), Town Two (2) South, Range

PROCLAMATION  
PHARMACY WEEK

WHEREAS, the week of October 6-12 is being observed as National Pharmacy Week under the auspices of the American Pharmaceutical Association, the pharmacist's professional society; and

WHEREAS, pharmacists are essential members of the team of professional persons who administer to the health needs of our people; and

WHEREAS, pharmacists conduct their businesses on a high professional plane that has accorded them the respect and confidence of the public,

NOW, THEREFORE, I, Robert Daniels, Mayor of the village of Chelsea, do hereby proclaim the week of October 6-12, 1963, as National Pharmacy Week in our community. I salute our pharmacists upon the contribution they make to over-all community health.

Three (3) East, Village of Chelsea, Washtenaw County, Michigan.

Motion by Chapman, supported by Clark to accept the bid of the Central Fibre Products Co. in the amount of \$100.00, and the exchange of a like amount of land immediately north to the 66 foot right-of-way. Roll call: Yeas all. Motion carried.

Motion by Clark, supported by Chapman, to adjourn this special meeting. Roll call, Yeas all. Motion carried.

Meeting adjourned.  
Approved: Oct. 1, 1963.  
Robert L. Daniels, President  
George Winans, Clerk.

SUBSCRIBE TODAY  
TO THE CHELSEA STANDARD!

Salt production centers in Detroit where one of the world's most modern salt mines, producing approximately one million tons annually, is beneath the city.

Lake Superior is the largest fresh water lake in the world. It is 31,820 square miles in area and the greatest recorded depth is 1,333 feet.

**Beef 'em up with tested FEEDS**

More profits per pound of gain! Get your steers ready for early market, with tested, fortified Cattle Feeds to beef 'em up... fast.

Complete feeding rations for all your livestock, poultry.

**FARMERS' SUPPLY CO.**  
PHONE GR 5-5511

**Fancy Jonathon and McIntosh APPLES**  
Bring Containers and Pick Your Own

**\$2.00 bu. or 3 bu. \$5.00**

**BEISIEGEL ORCHARDS**  
Telephone NO 8-7563  
2645 Peters Road Dexter, Mich.

**CLOSING OUT GROCERY STOCK at 20% Off**  
Buy now to get your choice!

**GRACEY'S**  
LIMA CENTER

**FIRST SHOWING**

**1964 MODELS**

**You Are Invited to the Showing of the NEW 1964 BUICK and OLDSMOBILE**

OPEN FRIDAY, OCT. 4 UNTIL 9 P.M.  
SATURDAY, OCT. 5, UNTIL 6 P.M.

**Be Sure To See These Two Great Cars!**

**DANIELS MOTOR SALES, INC.**  
208 Railroad Street Phone GR 9-6731

**ANNIVERSARY SALE**  
STARTS THURSDAY QUANTITIES LIMITED

**PROVEN STEAM DRY IRON**  
Automatic steam or dry ironing with a flick of the thumb control. Easy-to-read heat control for all fabrics. Reversible cord for right or left hand use.  
LIST PRICE \$14.95  
**ANNIVERSARY SPECIAL \$8.88**

**NEWS FLASH!**  
Phone anywhere in the U.S.A. for 3 minutes for only \$1.00 after 9 p.m. Keep it under 3 minutes and save!

**3 MINUTE TELEPHONE TIMER**  
SPECIAL PURCHASE **\$1.00**  
Yes, you can phone anywhere in the continental U.S.A. and talk for 3 minutes after 9 P.M., up to 4:30 A.M. This attractive walnut framed timer will help you keep bills down. Use it in the daytime too!

**PROVEN NEW! SPONGE MOP**  
Regularly \$2.98  
**\$1.77**  
Special  
New clip-in sponge mop with chrome finish head and 48" handle. Thorough squeezing action lever. Assorted colors.

**BIG 22 GALLON PLASTIC TRASH CAN**  
List \$8.95  
**\$4.77**  
Fall Special  
Strong polyethylene trash can is watertight and never rusts, has easy to grip molded side handles. Snug fitting cover.

**28 lb. Turkey Size Oval ENAMEL ROASTER**  
Reg. \$2.98  
**PRE-HOLIDAY SPECIAL \$2.27**  
Bluestone enamel double duty roaster holds 20 lb. fowl or 25 lb. roast. Easy to clean.

**PAINT ROLLER SET**  
Reg. \$1.44  
**66c** Save 78c  
Giant size 14 1/4" x 9 1/2" deep well tray, roller with end cap construction and 7" cover of heavy pile janel fabric.

**FREE DISPENSER WITH PROVEN 30 FT. 3/4" ELECTRICAL TAPE**  
SPECIAL **66c**  
Plastic electrical tape in new refillable plastic case at no extra cost.

**QUICK DRYING ENAMEL SPRAY PAINT**  
Anniversary Special **77c**  
Full 1/2 Quart can  
Use indoors or outdoors; durable, rust and heat resistant. 14 Colors and zinc chromite undercoat.

**PORTABLE ELECTRIC HEATER**  
Anniversary Special **\$9.99**  
Reg. \$14.95  
Powerful 4-blade fan forces air over heating elements. Temperature control maintains selected temperature. 115 volts AC—UL approved.

**5 SEWN HOUSEHOLD BROOM**  
ANNIVERSARY SPECIAL **97c**  
Full size fine quality corn broom with sturdy, smooth handle.

**FLASHLIGHT BATTERIES**  
ANNIVERSARY SPECIAL **2 FOR 19c**  
Fits all standard flashlights. Guaranteed top quality, heavy duty, leakproof.

**CHELSEA HARDWARE**  
110 South Main St. Phone GR 9-6311



### Wirth Spoken at Methodist Church

Mrs. Jack R. Wirth, who married Saturday, Sept. 14, at the Methodist church, is now at Baker's Lake, off Helm.

Wirth is the son of Mrs. Owens of Rapid City, S.D. Her wedding, attended by approximately 75 guests, the bride wore a champagne-colored taffeta with a cummerbund and a blue lace jacket and over-shoulder. She wore a gold corsage in place of a veil and carried white carnations and yellow

quill Taylor, wearing a mint taffeta sheath with an emerald nylon jacket and matching accessories, served as maid of honor. She carried yellow roses. Mrs. Owens of Ann Arbor was maid and Alonzo Taylor and Taylor served as ushers.

Reception was held later at American Legion Home at Baker's Lake with approximately 160 guests attending.

The bride is a graduate of Chelsea High school and is employed at Chrysler Proving

ground. She is a graduate of Arbor High school, is employed at Chrysler Proving

ground. She is a graduate of Arbor High school, is employed at Chrysler Proving

ground. She is a graduate of Arbor High school, is employed at Chrysler Proving

ground. She is a graduate of Arbor High school, is employed at Chrysler Proving

ground. She is a graduate of Arbor High school, is employed at Chrysler Proving

ground. She is a graduate of Arbor High school, is employed at Chrysler Proving

ground. She is a graduate of Arbor High school, is employed at Chrysler Proving

ground. She is a graduate of Arbor High school, is employed at Chrysler Proving

ground. She is a graduate of Arbor High school, is employed at Chrysler Proving

ground. She is a graduate of Arbor High school, is employed at Chrysler Proving

ground. She is a graduate of Arbor High school, is employed at Chrysler Proving

ground. She is a graduate of Arbor High school, is employed at Chrysler Proving

ground. She is a graduate of Arbor High school, is employed at Chrysler Proving

ground. She is a graduate of Arbor High school, is employed at Chrysler Proving

ground. She is a graduate of Arbor High school, is employed at Chrysler Proving

ground. She is a graduate of Arbor High school, is employed at Chrysler Proving

ground. She is a graduate of Arbor High school, is employed at Chrysler Proving

ground. She is a graduate of Arbor High school, is employed at Chrysler Proving

ground. She is a graduate of Arbor High school, is employed at Chrysler Proving

ground. She is a graduate of Arbor High school, is employed at Chrysler Proving

ground. She is a graduate of Arbor High school, is employed at Chrysler Proving

ground. She is a graduate of Arbor High school, is employed at Chrysler Proving

ground. She is a graduate of Arbor High school, is employed at Chrysler Proving

ground. She is a graduate of Arbor High school, is employed at Chrysler Proving

ground. She is a graduate of Arbor High school, is employed at Chrysler Proving

ground. She is a graduate of Arbor High school, is employed at Chrysler Proving

ground. She is a graduate of Arbor High school, is employed at Chrysler Proving

ground. She is a graduate of Arbor High school, is employed at Chrysler Proving

ground. She is a graduate of Arbor High school, is employed at Chrysler Proving

ground. She is a graduate of Arbor High school, is employed at Chrysler Proving

ground. She is a graduate of Arbor High school, is employed at Chrysler Proving

ground. She is a graduate of Arbor High school, is employed at Chrysler Proving

ground. She is a graduate of Arbor High school, is employed at Chrysler Proving

ground. She is a graduate of Arbor High school, is employed at Chrysler Proving

ground. She is a graduate of Arbor High school, is employed at Chrysler Proving

ground. She is a graduate of Arbor High school, is employed at Chrysler Proving

ground. She is a graduate of Arbor High school, is employed at Chrysler Proving

ground. She is a graduate of Arbor High school, is employed at Chrysler Proving

ground. She is a graduate of Arbor High school, is employed at Chrysler Proving

ground. She is a graduate of Arbor High school, is employed at Chrysler Proving

ground. She is a graduate of Arbor High school, is employed at Chrysler Proving

ground. She is a graduate of Arbor High school, is employed at Chrysler Proving

ground. She is a graduate of Arbor High school, is employed at Chrysler Proving

ground. She is a graduate of Arbor High school, is employed at Chrysler Proving

ground. She is a graduate of Arbor High school, is employed at Chrysler Proving

ground. She is a graduate of Arbor High school, is employed at Chrysler Proving

ground. She is a graduate of Arbor High school, is employed at Chrysler Proving

ground. She is a graduate of Arbor High school, is employed at Chrysler Proving

ground. She is a graduate of Arbor High school, is employed at Chrysler Proving

ground. She is a graduate of Arbor High school, is employed at Chrysler Proving

ground. She is a graduate of Arbor High school, is employed at Chrysler Proving

ground. She is a graduate of Arbor High school, is employed at Chrysler Proving

ground. She is a graduate of Arbor High school, is employed at Chrysler Proving

ground. She is a graduate of Arbor High school, is employed at Chrysler Proving

ground. She is a graduate of Arbor High school, is employed at Chrysler Proving

ground. She is a graduate of Arbor High school, is employed at Chrysler Proving

ground. She is a graduate of Arbor High school, is employed at Chrysler Proving

ground. She is a graduate of Arbor High school, is employed at Chrysler Proving

ground. She is a graduate of Arbor High school, is employed at Chrysler Proving

ground. She is a graduate of Arbor High school, is employed at Chrysler Proving

ground. She is a graduate of Arbor High school, is employed at Chrysler Proving

ground. She is a graduate of Arbor High school, is employed at Chrysler Proving

ground. She is a graduate of Arbor High school, is employed at Chrysler Proving

ground. She is a graduate of Arbor High school, is employed at Chrysler Proving

ground. She is a graduate of Arbor High school, is employed at Chrysler Proving

ground. She is a graduate of Arbor High school, is employed at Chrysler Proving

### Mrs. J. Wilbert Smith Installed as President Of OES County Assn.

Mrs. J. Wilbert Smith (Doris) was installed at appropriate ceremonies Saturday evening at the Masonic Hall in Ypsilanti as president of the Washtenaw County Association, Order of Eastern Star. She and other officers of the Association had been officially named at an afternoon session of the county organization.

Included are William Richardson of Manchester, first vice-president; Mrs. Ila Kunitz of Milan, second vice-president; Mrs. Lena Davenport of Saline, secretary-treasurer; Mrs. Winnie Arnett of Ypsilanti, chaplain; Mrs. Mildred Perry of Ann Arbor, marshal; and Mrs. Laura Hoffer of Dexter, historian.

Officiating as installing officer at the evening ceremony was Mrs. William Richardson of Milan. Others who participated are all members of Mrs. Smith's home chapter—Olive No. 108, OES—and included Mrs. Luella McManis as installing marshal; Mrs. Josephine Fowler, installing chaplain; Mrs. Leah Smith, installing organist; and Mrs. Eleanor Hall, installing soloist.

Officers of Olive Chapter No. 108, OES, formed an honor guard through which Mrs. Smith was escorted to her station at Mrs. Hall sang "Let Us Call You Sweetheart." A heart formation was executed by the officers and they then presented Mrs. Smith with a bouquet of pink roses.

Approximately 35 Chelsea members were present for the installation ceremony.

Ground Lamb Patties

Ever try ground lamb? It's "the best" in bacon wrapped patties. They're good for any meal; including breakfast. But, ground lamb should be seasoned well to make it as good as it can be. In addition to salt, you might add powdered thyme, poultry seasoning or dry mustard in addition to minced onion. Gourmet seasoning touches do a lot!



**ENGAGED** — Mr. and Mrs. Creed Craft of 637 W. Main St., Stockbridge, formerly of Chelsea, are announcing the engagement of their daughter, Kathryn, to Ward W. Vermeulen, son of Mr. and Mrs. Henry Vermeulen of 2730 Walcott Rd., Jackson. Miss Craft is employed at Jacobson's central offices in Jackson while her fiancé is employed at Beyer Machine Co. in Jackson. The couple plans to be married Nov. 23.

### Episcopal Women Will Host Huron Valley Convocation

Episcopal Church Women of St. Barnabas church held the September meeting Thursday evening. Mrs. Judson Goltra opening the session with prayer.

Mrs. John Smucker, during the evening's program, reviewed the first chapter of the year's study book, "Personalities of the Old Testament." The chapter pertained to Moses, the Hebrew prophet and lawgiver, who led the Israelites out of Egypt, according to Old Testament history.

Announcement was made that the United Thank Offering date is Oct. 20 and that the Huron Valley Convocation is scheduled for Oct. 17 at St. Barnabas church. Luncheon will be served by the women of the church.

Speaker at the convocation is to be St. Barnabas' vicar, the Rev. John R. Smucker.

Members were reminded that the kits for the United Church Women's World Community Day are to be brought to the October ECW meeting. The kits containing wash cloths, toilet soap, toothpaste and other toilet articles, it was explained, will be distributed later in Asia, Latin America and Africa.

Plans were discussed for the group's annual Christmas bazaar, scheduled for Thursday, Dec. 5.

Hostesses for Thursday's meeting were Mrs. Fred Meyers and Mrs. William Willard.

The next regular ECW meeting is scheduled for Oct. 24, hostesses to be Mrs. Sidney Schenk and Mrs. George McKeighan.

### FREEDOM — IDEAL HOMEMAKERS

Freedom Ideal Homemakers Extension study group, at its regular monthly meeting last Friday, had a lesson on the topic, "Co-Operative Extension Service." The lesson explained the purpose of extension study of various subjects pertinent to home economics and explained the role of Michigan

### Club and Social Activities

#### SUBURBAN MOTHERS

Suburban Mothers child study club, with 19 members and one guest present, met Thursday night at the home of Mrs. Ruth Cattell. Co-hostesses for the evening were Mrs. Norman Houk and Mrs. John McGill.

The program for the evening was a discussion on "The Art of Getting Along." Each member brought a question to be discussed. The evening was concluded with refreshments.

The first meeting of the year was held Sept. 12 at the home of Mrs. Ross Batzdorfer, with Mrs. Walter Bury and Mrs. Basil Ralby as co-hostesses. A business meeting was held followed by a program period during which each member told of activities of interest which occurred during the summer.

The next meeting will be held at the home of Mrs. William Dehn on Oct. 10.

#### BEACON LIGHT EXTENSION

Beacon Light Extension study group, with 15 members present, met Wednesday evening, Sept. 25, at the home of Mrs. Armin Kuhl.

Mrs. L. Dean Sodi opened the meeting and turned the gavel over to the new chairman, Mrs. Lowell Spike, who read notes pertaining to the latest Washtenaw County Extension Council meeting.

Members completed the year book and heard a report of the annual June outing given by Mrs. Jack Barkley.

The Extension lesson on the topic, "Getting Acquainted With Your Extension Service," was presented by Mrs. Ruth Sodi and Mrs. Erma Mayer, object of the lesson being to help group members to become better informed about Michigan State University, the Co-Operative Extension Service, and courses in the home economics family living program.

The Oct. 23 meeting is to be held at the home of Mrs. Erma Mayer, the roll call topic being "What I Consider the Most Outstanding Home Economics Lesson of Past Meetings."

#### LEGION AUXILIARY

Nineteen members of Herbert J. McKune Unit No. 31, American Legion Auxiliary, were present for the October meeting of the group which took place Tuesday evening at the Legion Home at Cavanaugh Lake.

It was announced that the November meeting will be held at the home of Mrs. Lynn Kern.

During the business session Tuesday evening it was agreed that the Auxiliary will sponsor two parties during the year at the VA Hospital.

Mrs. Paul Maroney gave a report of the Auxiliary district meeting held Sunday at Ann Arbor and mentioned that Mrs. Lyle Christwell, Sr., was presented with a citation there in recognition of her work at Ypsilanti State Hospital.

Those who attended the district meeting with Mrs. Maroney are Mrs. Roy Miller and Mrs. Christwell.

Hostesses for Tuesday's meeting were Mrs. Merle Barr, Sr., Mrs. William Blaes and Mrs. Clarence Bahmiller.

State University in relation to extension study.

The lesson at Friday's meeting was presented by Mrs. Erma Grau.

There were 14 members present. The next regular meeting will be held Oct. 18, at 1:30 p.m., at the home of Mrs. Herman Schabbe.

#### PAST NOBLE GRANDS

Past Noble Grand club of Rebekah Lodge, with 11 members present, met with Mrs. M. L. Dielle at her home on Washington St. Mrs. Dielle served a dessert supper as the guests arrived. The meeting took place Thursday evening.

During the business session Mr. Russell Altstetter was appointed as secretary to fill the vacancy caused by the resignation of Mrs. Vernon Parks.

Mrs. Dielle, who is the club president, presented to each member present, a booklet she had made, entitled "Your Life." Included were the individual's picture, information pertaining to birthdays, anniversaries, etc., and when she became a member of the club as well as dates when she served in various offices of the lodge and club.

Mrs. Anna McDonald and Mrs. Wilbert Breitenwischer will be hostess and co-hostess, respectively, for the October club meeting.

#### Sisters at St. Mary's School Are Guests Sunday at Silver Tea

Mrs. William Kolb and Mrs. Robert Tobin, lay teachers at St. Mary's school, poured at the silver tea given Sunday afternoon in honor of the Sisters of the school. The table was especially attractive with its centerpiece of fall flowers and the dainty cookies which ladies of the parish had baked for the occasion.

The tea was held at the convent on Congdon St.

The St. Mary's Altar Society committee in charge included Mrs. Charles Sullivan, Mrs. Donald Blacklock and Mrs. William Clark.

The tea is in the nature of a shower for the Sisters at the beginning of the school year.

### Charm Chats



#### TODDY and FRAN

#### FALL PERM

Is your hair at its best right now? If not, why not. No matter how becoming your hairstyle may be, it must have some foundation to keep it looking just right. It will take a professional permanent to provide this necessary body. There is a wave designed for your own particular type of hair. First of all it must be in good condition. Expert hair-cutting and shaping are also important to create the wanted effect.

It's time for your new fall wave. You'll find this necessary to keep your current coiff looking just so. Magic Mirror Beauty Salon, 6585 Jackson Road, Ann Arbor, 665-0816.

### Water Repellent Service

COATS - TRENCH COATS  
HUNTING CLOTHES - TOPCOATS  
SNOW SUITS

**SPECIAL**  
**50¢** plus cleaning and pressing charges.

OFFER CONTINUES THROUGH OCTOBER

### PARKER'S

EXPERIENCED CLEANERS

Phone GR 9-6701 Chelsea 113 Park St.



COZIEST WAY  
TO KEEP  
FEET WARM  
BOOTS  
by  
*Ki-Yaks.*

Get into the swing of fashion with boots by Ki-Yaks. It's the smartest, snuggest, warmest way to go! When weather demands, fashion dictates shoe boots... and we've a most exciting collection. All with "true shoe fit."



Patty Ann Shoppe

### All New ELGIN portable RADIOS

More Transistors... More Quality Features... Better Styling Than You'll Find Anywhere Else At These Prices



10 TRANSISTOR POCKET SIZE \$19.95

Complete with 4 penlite batteries, earphone, top grain leather carrying case—ready to play!

Of all pocket size radios... only Elgin gives you 10 transistors for big radio sound... greater range, at this low price! Compare these features: 10 transistors, precision Verrier tuning, extra length antenna, slide-rule scale, oversize speaker. All this in a trim, slim 5 1/4" x 3 1/4" x 1 1/2"! It's the greatest pocket portable buy in town!



10 TRANSISTOR \$39.95 AM PORTABLE complete with batteries and earphone—ready to play!

11 TRANSISTOR \$65.00 AM/FM PORTABLE complete with batteries and earphone—ready to play!

Winans Jewelry Store

Every pattern of famous Franciscan Earthenware in our stock included in this tremendous sale. Start your Franciscan service now at big savings!

16 piece starter set...

**\$300 OFF**

4 DINNERS  
4 DESSERTS  
4 CUPS  
4 SAUCERS

• DESERT ROSE and all other decorated, \$16.95 • SIERRA SAND, \$14.95 • SNOW CREST, \$11.95



OVEN SAFE/COLOR FAST

### MERKEL BROTHERS

BEAUTIFUL HOME FURNISHINGS



## Community Calendar

Lima Center Extension Study Group Wednesday, Oct. 9, 10:30 a.m., at the home of Mrs. George Frisinger on Jerusalem Rd. Members reminded to bring pictures of previous meetings or activities; also ideas for Christmas decorating and gifts.

Cub Scout Committee meeting Monday, Oct. 7, 7:30 p.m. at the home of Mr. and Mrs. Vernon L. Ks.

SCS of Salem Grove Methodist church will hold their annual picnic supper, Thursday, Oct. 10, 5:30-6:30-7:30. Any one wishing tickets please contact Nina Wahl, GR 5-5977. adv17

Chelsea Community Farm Bureau Thursday, Oct. 10, at the home of Mr. and Mrs. J. P. Cook 10941 Old US-12. Pot-luck supper at 7:15 p.m.

Goodwill of Jackson will have truck in Chelsea Tuesday, Oct. 15, to pick up your usable discards. Call GR 5-5171 for pick-up or take articles to 320 East St. adv15

St. John's E & R church, Rogers Corners, annual ham supper Thursday, Oct. 24, 5:30-6:30-7:30. For tickets or reservations call Mrs. Robert Trinkle, GR 5-8516 or Mrs. Donald Bauer, GR 5-5751. adv17

South Sylvan Extension study group Thursday, Oct. 10, 1 p.m., at the home of Mrs. Joe T. Merkel.

Child Study club Tuesday, Oct. 8, 8 p.m., at the home of Mrs. Robert Taylor. Speaker: J. V. Burg, II; topic: Chelsea Youth Commission. Thrift sale. Each member to bring 13 cookies.

Kinder Klub meeting Tuesday, Oct. 8, 8 p.m., at the home of Mrs. Charles Smith.

The Class of 1964 is conducting a magazine sale which will be concluded Tuesday, Oct. 8. adv14

Fall rummage sale of Woman's club Friday and Saturday, Oct. 18-19, at Sylvan Town Hall. adv14

Olive Lodge No. 156, F&AM, Entered apprentice degree, Tuesday, Oct. 8, 7:30 p.m.

Everything to make the home beautiful.

See our display of fall flowers and other items

Fresh-Cut Flowers and Potted Plants for all occasions

We make floral pieces for funerals

Phone: GR 5-4561

**Sylvan Flower Shop**  
716 West Middle St.  
Chelsea, Michigan  
LOCAL DELIVERY



Jerusalem Farm Bureau Thursday, Oct. 10, 8:30 p.m., at the home of Mr. and Mrs. Bernard Herrst. Bring sweet rolls.

The 25 & Up Dance Club (for unmarrieds only) will hold its next dance at 9 p.m. Tuesday, Oct. 8, at the YM-YWCA, Ann Arbor. More information may be obtained by calling Lorena Liston, HA 9-7353, evenings.

Regular meeting Olive Chapter, No. 140, RAM, Thursday, Oct. 3, 7:30 p.m.

Annual turkey supper at Waterloo Village church Thursday, Oct. 24. Serving begins at 5:30 p.m. adv15

Wide Awake 4-H club organizational meeting Oct. 5 at the home of Mrs. Charles Curtis, 1:30 sharp.

Limaneers meeting Thursday, Oct. 3, at the home of Mrs. Dave Pastor. Pot-luck dinner at noon.

St. Paul's Mission club Thursday, Oct. 3, 2 p.m., at the church hall. Hostess: Mrs. Ola Hilsinger.

Euchre party sponsored by St. Mary School Association Saturday, Oct. 5, 8 p.m., at Chelsea High school cafeteria. Progressive prizes, refreshments. Tickets at Merkel's store. Also available from any member and at door. adv14

Pie plates, cake plates, and other pans and dishes left at the Community Fair restaurant may be picked up at the home of Mrs. H. O'Dell, 125 East Summit St.

## BIRTHS

A daughter, Mary Annette, Thursday, Sept. 26, to Mr. and Mrs. Chalmer Barker.

A daughter, Carol Ann, Thursday, Sept. 26, at St. Joseph Mercy Hospital, Ann Arbor, to Mr. and Mrs. William M. Harvey, 13410 Old US-12.

Tuesday, Oct. 1, at Ingham Medical Hospital, Lansing, to Mr. and Mrs. Brian Ahern of Williamston, a son, Tracy Lee. Mr. Ahern is employed at The Chelsea Standard.

## Flat Rock Minister

To Conduct Meetings At Church of Christ

Clark Elkins, Church of Christ minister at Flat Rock, will conduct a series of services at the Chelsea Church of Christ, 13661 Old US-12.

Services will be held each evening at 7:30 p.m., beginning Sunday, Oct. 6 and continuing until Sunday, Oct. 13.

Interested persons in the community are invited to attend.

**Steer Club Prospects Should Sign By Oct. 8**

Gary Jackson, Chelsea High school agriculture teacher and PFA advisor, reminds those interested in becoming Steer Club members that they must contact him by Tuesday, Oct. 8.

He may be reached at the high school or at his home where the phone number is 475-8955.

## DEATHS

**Mrs. A. L. Steger Dies Friday Night**

At Ann Arbor Hospital

Mrs. A. L. Steger, wife of Dr. A. L. Steger, retired Chelsea dentist, died Friday night at St. Joseph Mercy Hospital, Ann Arbor. She had been a patient at the hospital the past six weeks. She was 70 years old.

The former Elizabeth M. Breitenbach, she was born in Lyndon township April 8, 1884, a daughter of John and Margaret Mullin Breitenbach.

Dr. and Mrs. Steger had made their home for many years at 402 South Main St.

Surviving are her husband, Dr. A. L. Steger; two sons, W. Arnold and Lawton J., both of Chelsea; one sister, Mrs. D. C. (Veronica) Munro of Jackson; five grandchildren and one great-grandchild.

Funeral services were held at 2:30 p.m. Sunday at the Stankin Funeral Home with the Rev. James Craig of the Methodist church officiating. Burial followed at Oak Grove cemetery.

## Key Club ...

(Continued from page one)

ing, according to GreenLeaf's resume of the gathering. They told how the Key clubs were instrumental in training for leadership in the school and community and what club members have accomplished in the way of community service projects and the benefits they, themselves, have gained from club membership.

GreenLeaf said he was impressed with the talks given by the young Key club members and mentioned particularly that Fullerton gave a list of the club's objectives.

Of particular interest to the 60 boys and their parents who were present, GreenLeaf said, were the six ideals mentioned by Fullerton which Key club members pledge "to accept and promote." He listed these as follows:

To give primacy to the human and spiritual, rather than to the material values of life.

To encourage the daily living of the Golden Rule in all human relationships.

To promote the adoption and application of higher standards in scholarship, sportsmanship, and social contacts.

To develop, by precept and example, a more intelligent, aggressive and serviceable citizenship.

To provide a practical means to form enduring friendships, to render unselfish service and to build better communities.

To co-operate in creating and maintaining that sound public opinion and high idealism which make possible the increase of righteousness, justice, patriotism and good will.

GreenLeaf concluded his report by stating that at the close of Wednesday's meeting 48 Chelsea boys expressed a desire to join the Key club of Chelsea High school.

## Rod & Gun Club

Plans Series of

Sunday Trap Shoots

Carl H. "Dutch" Schwieger, chairman of the Chelsea Rod and Gun club, trap shoot committee, said yesterday that the committee has decided to hold three Sunday events—Oct. 6, 13 and 20, beginning each time at 10 a.m.

The shoots will be held at the club's trap range on Lingane Rd. and, in keeping with past custom, the trap shoots are open to the public.

## Community Chest Benefitting Agencies

### Chelsea Social Service

This is the seventh in a series of articles explaining about the various benefiting agencies included in the Chelsea Community Chest. Today's article is on the activities of the Chelsea Social Service and, where the organization's annual meeting took place last week, a report on that meeting is most appropriate in acquainting area residents with the work of the past year and plans for the future.

Members of the board of directors for Chelsea Social Service met for the annual meeting of the corporation at a noon luncheon on Sept. 24 in the Woman's Club room of the McKune Memorial Library. Present, in addition to the director, Mrs. Louis Ramp, were Mrs. Paul Schaible, Mrs. LeRoy Hoffman, Mrs. Arthur Schunk, Charles Lancaster and Harold Jones.

Featured at the meeting were reports from the treasurer, Mrs. Hoffman, and the director, Mrs. Ramp, with discussion of changing times and changing needs in the community. Since nearly all of the funds for administering the program come from the Community Chest, it is the goal of the board and of the director to expend the funds and offer services to benefit as large a segment of the local population as possible.

In reporting on the funds handled, Mrs. Hoffman said that \$1850 was received from the Community Chest. In addition, there were cash donations from the Needlework Guild, Evening Philathea Circle of the Methodist church, Chat 'n' Sea of the Congregational church, the Latin Club of the High School, the High School Student Council, Chelsea Child Study Club, Beta Sigma Phi Sorority and one cash donation at Christmas from a local family.

Disbursements are made for purchase of food, clothing, fuel and medical aid to the needy, in addition to administrative expense for operating the office.

As the new fiscal year gets underway, there is sufficient cash on hand to ensure the granting of assistance to any applicant genuinely in need and to provide for the needy at Christmas—as in years past.

In reporting on her work, Mrs. Ramp spoke of the changes in the nature of the work of the Social Service during her tenure of office. Nowadays, much of what is accomplished for individuals is done as part of an over-all plan, with various community agencies taking part. During the year just past, Mrs. Ramp has worked on problems of local families with the Visiting Nurses, the Welfare and Bureau of Social Aid, the Salvation Army and American Red Cross, the Juvenile Court workers, the Michigan Children's Aid and Michigan Children's Institute, the Friend of the Court, the Catholic Social Service, the Washtenaw County Sanitarium, the township supervisor, and local physicians, police, school personnel and businessmen.

She went on to describe a plan set up during the year just past, where dental care is provided at cost of materials used or less by local dentists to young patients, whose need and inability to pay the going rate has been established.

In giving the statistical report for the year, Mrs. Ramp said there has now been contact regarding need with a total of 276 family units in the area of the Chelsea School District. Of these, 16 are families served at Christmas only and two are persons receiving den-

tal care but no other service. Thirty-nine are considered active because they have been seen within the year, while 158, not seen in the last year, are in the "closed" file. Eight were transients, usually seen only once when they were given the means of continuing on their way. Twenty-six are in the "deceased" file and 27 in the "no service" file, meaning they were interviewed once or referred and investigated, but no way was found in which the Chelsea Social Service could be of service.

Interviews for the year, including personal contacts and telephone calls totaled 275. There were 135 office interviews with clients and seven collateral office interviews. Thirteen home calls were made on clients, and five collateral calls were made outside the office. Clients were interviewed by phone 37 times and there were 80 collateral telephone conversations.

Election of the Board of Directors concluded the business of the day. All present Directors were re-elected, namely: Louis Burghardt, president; Mrs. R. W. Wagner, vice-president; Mrs. Paul Schaible, secretary; Mrs. LeRoy Hoffman, treasurer; and members Mrs. E. W. Eaton, Mrs. Arthur Schunk, Harold Jones and Charles Lancaster. Mrs. Ramp will continue as director, with Mrs. David-Colquhoun as the assistant.

## Personal Notes

Sunday dinner guests of Mrs. Walter Trinkle were Mr. and Mrs. Otto Trinkle of near Manchester, Mr. and Mrs. Fred Hieber of Seio township, and Mrs. Martha Hildinger and George Waltz, of Lodi township. The Hiebers, Mrs. Hildinger and Mr. Waltz accompanied Mrs. Trinkle to St. Paul's church to attend the annual mission festival.

Mr. and Mrs. Claude Isham have returned from a three-week vacation trip to the west coast. They visited Seattle, Wash., San Francisco, Los Angeles and San Diego, Calif., and stopped at Denver, Colo., for a visit with Mrs. Isham's sister and her husband, Mr. and Mrs. Lester Nepple. The Ishams traveled by train.

## Village Council Briefs ...

(Continued from page one)

tion: Contact Village Attorney John Kousch for legal advice on the matter and contact the Chelsea merchants' organization regarding parking lot funds outstanding.

The property north and behind the library—site of the proposed parking area—is the property of George L. Staffan.

Motion approved to confirm the employment of Joseph Brannan by the Public Works Department.

Authorization voted for partial payment to Frederick Belsor for the new fire hall construction. Amount: \$5,400.

Authorization voted for payment of \$800 to Selders Construction Co., this being the final payment on the South Main St. sewer construction.

Council meetings are held the first and third Tuesdays of the month, beginning at 8 p.m. Meetings are held in the Council room on the second floor of the Municipal Building and interested citizens are welcome to attend.

## Personal Notes

Mr. and Mrs. Richard V. and children, Robert and Linda Elkhart, Ind., were guests on Sunday at the home of the former parents, Mr. and Mrs. Walter and Annabelle Woolley.

Saturday evening dinner guests of Mrs. Alma Babumiller were Mrs. William Beach and Lester of Chelsea-Dexter Rd. Mrs. Esther Green and Mrs. Waldo Eisemann of Ann Arbor.

## GUARANTEED TROUBLE-FREE FOR THE LIFE OF YOUR HOME!

The All New **3 TRACK HOMEguard TILT** Lifetime Aluminum Combination **STORM-SCREEN WINDOWS**

**\$13<sup>35</sup>**  
101 combined inches add height plus width of opening.

**SPECIAL 2-TRACK WINDOW** ..... \$11.89  
**WHITE ALUMINUM 3-TRACK** ..... \$19.95

**NO DOWN PAYMENT**

**FREE MEASURING SERVICE!**  
Let our experts measure your windows accurately—no guesswork. Call your Gamble store now for this FREE service. No obligation.

Attention Homeowners! Now at Gamble's, the all-new, feature-packed Homeguard 3-track storm-screen windows—priced sensationally low! Made of finest quality aluminum for a lifetime of worry-free service. Save Now at Gamble's!

**ALWAYS BETTER BUYS AT GAMBLE'S**

## SAVE ON OUR FLOOR CLEARANCE SALE

New models are coming in. To make room we are offering these special prices on our present display merchandise.

**DELUXE 30" ELECTRIC RANGE**

Automatic clock and oven. Glass in door.

**Only \$149<sup>00</sup>** with trade

**13 CU. FT. COMBINATION**

**Freezer-Refrigerator**

100% Automatic Defrost

**Only \$249<sup>00</sup>** with trade

**PORTABLE**

**STEREO PHONOGRAPH**

Matching stand free

**\$79<sup>00</sup>**

**14 CU. FT.**

**UPRIGHT FREEZER**

**Only \$219<sup>00</sup>**

**MAYTAG MATCHING**

**WASHER & DRYER**

**Only \$318<sup>00</sup>** For Both with trade

**23" CONSOLE**

**TELEVISION**

Beautiful walnut cabinet

**Only \$179<sup>00</sup>** with trade

**20 CU. FT. REVCO**

**CHEST FREEZER**

**Only \$249<sup>00</sup>**

**DELUXE MAGNAVOX**

**STEREO**

Beautiful mahogany cabinet. Reg. \$200 value

**Only \$149<sup>00</sup>**

# FRIGID PRODUCTS

113 N. MAIN ST.

LLOYD R. HEYDLAUFF

PHONE GR 9-6651

## This Pair Makes Painting A Pleasure!

The Greatest House Paint in 2,000 Years!

**ROX**

5-Year All-Surface Paint



- ★ 9-Year Exposure Tested.
- ★ Breathes—Won't Blister or Peel.
- ★ Non-Chalking—Will Not Run Down on Bricks.
- ★ Roll, Brush or Spray.
- ★ Wash Tools in Water.
- ★ Dries in 20 Minutes.
- ★ With Built-In Primer.
- ★ White and Nine Colors.

**\$7.95** per gal.

**SPRED SATIN**

The Latex Wonder Paint



Now It's Homogenized To A Creamy Consistency!

- ★ Roll or Brush.
- ★ Dries in 20 Minutes.
- ★ Maximum Washability
- ★ 200 Colors.
- ★ Matching Semi-Gloss
- ★ Wash Tools in Water.
- ★ No Odor.

**\$5.95** per gal.

**ROX- THE PERFECT PAIR FOR PLEASANT PAINTING -SPRED**

**CHELSEA LUMBER CO.**

DIAL GR 5-3391



# The NATIONAL OUTLOOK

By GEORGE HAGEDORN

## Big Brother To Help Pay Food Bill . . .

A proposal presently before the House of Representatives would establish a national food-stamp program. Its announced purpose is to improve the nutrition of low-income families and to help in the disposal of agricultural surpluses. It would also have the effect of federal-encroachment on the state and responsibility of individual households to make their own budgetary decisions; on states to deal with welfare problems within their borders, and on merchants to conduct their businesses in their own way.

Briefly the plan would work as follows: Needy families (not necessarily families already receiving public assistance) would be certified as eligible by their local

Welfare Offices. The local official would then determine, under a federally-approved formula, how many food stamps the family should purchase and how many free stamps it would be given as a bonus. The stamps would be used as substitutes for cash in purchasing food items in eligible retail stores. The federal government would pay the entire bill for providing the bonus stamps.

The Secretary of Agriculture would have very extensive but loosely-defined powers in administering the plan. For example, the states are directed to establish eligibility standards for participating households which take into account such factors "as the Secretary determines will tend to effectuate the purposes of the food stamp program." The coupon al-

lotment for each family shall be "in such amount as will provide each household with an opportunity more nearly to obtain a nutritionally adequate diet." The payment the family is required to make for its coupons is the amount that "the Secretary determines is equivalent to their normal expenditures for food."

For a retail store to be eligible to receive the stamps it must first get the approval of the Secretary of Agriculture. Applicant firms will be required by the Secretary to submit such information as he feels he needs to make his decision. The Secretary is authorized to issue regulations which could presumably cover the pricing policies and merchandising practices of participating merchants. Businesses which have been approved

may later be summarily suspended if the Secretary finds they have violated the law or the regulations he has issued under it.

Preventing families from trading their coupons to others for cash or non-food items would pose substantial problems. The bill provides severe penalties for this kind of chiseling, but enforcing it would seemingly involve rather extensive policing.

Congress had better take a good look at any proposal which gives a federal official such powers for arbitrary intervention in personal, business and state and local affairs—and imposes only very loose controls on his spending of the taxpayers' money.

A Standard Want Ad Will Sell Your Unused Items.

## SNEEZES EXPLAINED

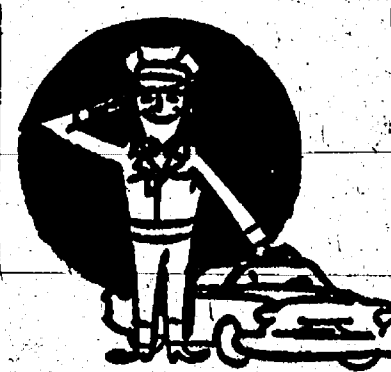
Phoenix, Ariz.—For years Clyde Garwood, 60, has wondered why he sneezed so much while at work. He is supervisor of licensing for Maricopa county's animal pound field crew.

Only recently he learned that he was allergic to animal hair.

## Kiwanis Quotes

Though I bestow all my goods to feed the poor, and though I give my body to be burned, and have not charity, it profiteth me nothing.

—1 CORINTHIANS 13:3



Everything right . . . ready to roll!

You know your car is RIGHT, when we check it out after any oil change or lube job.

Because we take particular care on every job, you can drive off without a care . . . confident of safe, smooth motoring.

PURE OIL PRODUCTS

# HANKERD'S SERVICE

Tires — Batteries — Tune-Ups — Brake Service — Wheel Alignment  
PHONE 479-3541 CHELSEA, MICH.

## STORE HOURS

Mon. Thru Wed. 9 A.M. To 6 P.M.  
Thurs. And Fri. 9 A.M. To 9 P.M.  
Saturday 8 A.M. To 9 P.M.

PRICES EFFECTIVE

WEDNESDAY, OCTOBER 2, THRU TUESDAY, OCTOBER 8, 1963

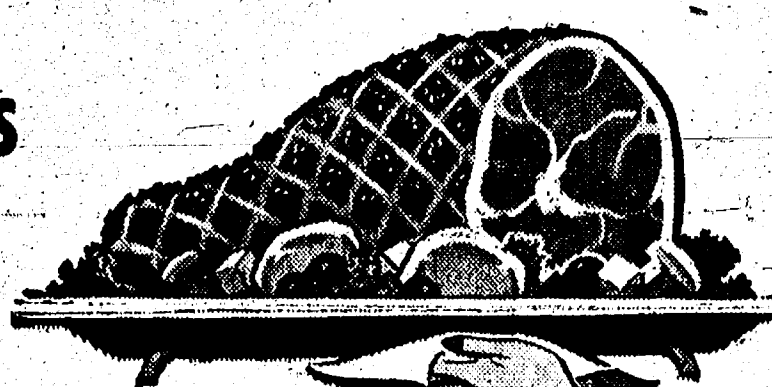
We Reserve The Right To Limit Quantities

# STOP & SHOP

14901 Old U.S. 12 - Corner M92 - Chelsea, Mich.

STOP & SHOP Features... "Triple R Farms" ... U. S. Choice... Corn Fed Beef

FARMER PEET'S  
Semi-Boneless



# HAMS

- Hickory Smoked
- Ready To Eat
- Shankless
- Skinless

Whole  
or  
Half

# 59<sup>c</sup>



Lean, Tender  
BOSTON BUTT

# Pork ROAST

# 39<sup>c</sup>

"Triple R Farms" - Fresh, Sliced

# BEEF LIVER

PETER'S HICKORY HOUSE - Hickory Smoked  
SLICED BACON

Lean, Meaty, Tender

# Pork STEAK

# 49<sup>c</sup>

Lean, Tender  
BONELESS and CUBED

# PORK CUTLETS

"Triple R Farms  
FRESH DRESSED

★ Chicken Legs **49<sup>c</sup>** lb.

★ Chicken Breasts **59<sup>c</sup>** lb.  
(Ribs Attached)

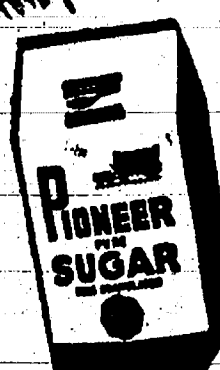
# 59<sup>c</sup>

STOP & SHOP'S - Homemade  
PORK SAUSAGE **39<sup>c</sup>** lb.

GARDEN FRESH - Solid, 'Green

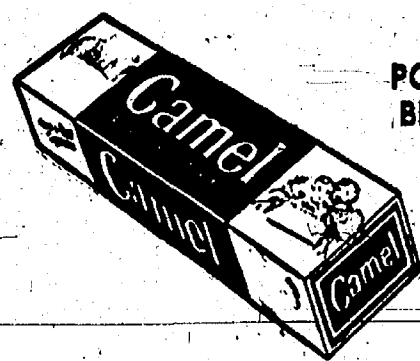
# CABBAGE

# 5<sup>c</sup>



PIONEER - Fine Granulated

# SUGAR 10<sup>lb.</sup> 98<sup>c</sup>



ALL  
POPULAR  
BRANDS

# CIGARETTES

Regular Size Ctn. **\$2.41**

King Size Ctn. **\$2.45**

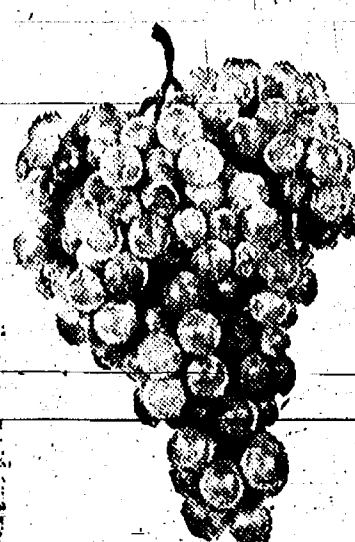


BANQUET - Frozen

# MEAT PIES

• Chicken • Turkey • Beef

# 14<sup>c</sup>



CALIFORNIA Red Flame

# TOKAY GRAPES 12<sup>c</sup>

WILSON'S - All Star - Fresh Creamed

# COTTAGE CHEESE

1-Lb. Ctn. **17<sup>c</sup>**

ONE A DAY - "For Better Health"

# Multiple Vitamins

100 Tablets **\$1.69**

HEINZ

# TOMATO SOUP

6 No. 1 Cans **59<sup>c</sup>**

HUNT'S

# PORK & BEANS

16 Oz. Can **10<sup>c</sup>**



KELLOGG'S

# CORN FLAKES

12 Oz. Box **19<sup>c</sup>**

WILSON'S - All Star

# MILK

"Sta-Fresh" Homogenized

1/2 Gal. Glass **35<sup>c</sup>**

SEALDWEET - Fresh Frozen

# ORANGE JUICE

6 Oz. Can **23<sup>c</sup>**

NORTHERN ORCHARDS - Pasteurized

# APPLE CIDER

No Deposit Gal. Jug **69<sup>c</sup>**

STRAINED VARIETIES

# HEINZ BABY FOODS

Jar **8<sup>c</sup>**



MAXWELL HOUSE

# COFFEE

2 Lb. Can **\$1.14**

COUNTRY KITCHEN

# BISCUITS

(Ready To Bake) Tube Of 10 **8<sup>c</sup>**

STOKELY'S - Yellow Cling

# PEACHES

• Halves or Sliced 3 No. 2 1/2 Cans **79<sup>c</sup>**

MAISON ROYAL - Pure, Ground

# BLACK PEPPER

4 Oz. Tin **19<sup>c</sup>**

HYGRADE'S

# Luncheon Meat

12 Oz. Can **37<sup>c</sup>**

HERSHEY'S - Instant

# Cocoa Mix

1-Lb. Can **38<sup>c</sup>**

NABISCO

# Premium Saltines

1-Lb. Box **28<sup>c</sup>**

SUNSHINE - Sugar Honey

# Grahams

1-Lb. Box **37<sup>c</sup>**

KRUN-CHER

# Potato Chips

14 Oz. Bag **59<sup>c</sup>**

HEKMAN - Town House

# Crackers

1-Lb. Box **37<sup>c</sup>**





# BOWLING NEWS



## Chelsea Lanes Mixed League

Standings as of Sept. 27	W	L
Wolverine Bar	12	4
Jiffy Mixers	12	4
Fortune Industries	10	6
Hankard's Firebirds	9	7
Feldkamp-Hansen	9	7
Samp's Barber Shop	8	8
Jacks	8	8
Jack Pats	7	9
4 R's	6	10
Legionnaires	6	10
Kings and Queens	5	11
4 S's	4	12

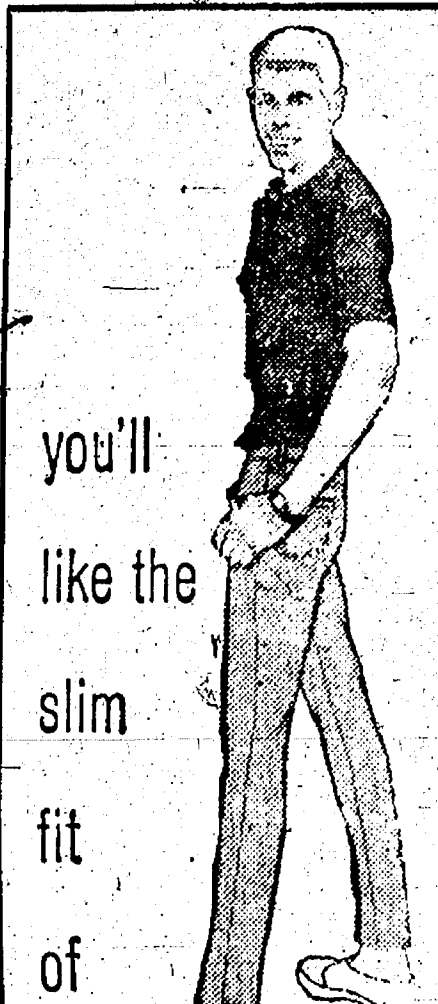
Men's 475 series or over: D. Rogers, 548; M. Poertner, 527; S. Policht, 503; L. Kusterer, 478.

Men's 175 games or over: M. Poertner, 195-180; D. Rogers, 189-188; L. Kusterer, 180; M. Packard, 180; J. Eisenman, 178; F. Sweeney, 177; S. Policht, 170.

Women's 450 series or over: N. Eisenman, 488; A. Turner, 463; P. Poertner, 451; E. Harmon, 451.

Women's 150 games or over: N. Eisenman, 200-160; A. Turner, 160-153; E. Harmon, 168-160; P. Poertner, 168-157; L. Kusterer, 165; A. Alexander, 153; C. Hansen, 153; J. Dickelman, 152.

A Standard Want Ad Will Sell Your Unused Items.



you'll like the slim fit of

**LEVI'S**

SLIM FITS

IN SANFORIZED T.WILL

**\$4.98**

**STRIETER'S**

Men's Wear

"The Place To Go For Brands You Know"

## Suburban League

Standings as of Sept. 25	W	L
State Farm	12	4
Shell Tower	12	4
Colonial Manor	11	5
Royal Lancers	10	6
Wolverine Tavern	9	7
Fatty Ann Shoppe	8	8
Chivon Restaurant	7	9
Trail Blazers	7	9
GE Gals	7	9
Detting's	5	11
Rare Pennies	4	12
Waterloo Garage	4	12

High team, 3 games: GE Gals, 2-147.

High individual 3 games: N. Packard, 480.

High individual 1 game: B. Hafley, 188.

Over 425: B. Hafley, 475; R. McGibney, 452; B. Fritz, 431; N. Simpson, 431; E. Schulz, 450; F. Miller, 450; A. Hocking, 451; M. Westcott, 454; J. Huston, 425; B. Smith, 454; J. Lake, 349; A. Dyer, 428.

Over 175: J. Lake, 179; A. Dyer, 178; J. Huston, 183; E. Schulz, 178; B. Fritz, 175.

Splits picked up: D. Houle, 6-7; 10; M. Breitenwieser, 3-10; 5-7; R. McGibney, 3-10; 5-6; 3-10; R. West, 5-8-10; P. O'Neill, 4-7; J. Kipfmiller, 5-6; E. Yocum, 4-7; N. Packard, 4-5; G. Leach, 5-6; K. Snyder, 5-7; M. Westcott, 3-10; J. Edick, 4-5; B. Reithmiller, 5-10; E. Schulz, 3-10, 2-7-10.

## Boys Junior League

Team	W	L
Team 1	13	3
Team 3	12	4
Team 9	11	5
Team 4	9	7
Team 2	8	8
Team 7	8	8
Team 6	7	9
Team 5	6	10
Team 8	5	11
Team 10	4	12

150 games and over: Barry Visek, 199; Gary White, 196; Neil Packard, 178-176-174; Phil Boham, 164; Jack Risner, 161-151; Louie Deloy, 188; Dave Bable, 178; Bill Campbell, 150; Dennis White, 150-175-155; John Freeman, 153; Norm Green, 151-170.

200 games: Gordon Beeman, 208.

400 series and over: Tom Kern, 417; Barry Visek, 452; Gary White, 451; Phil Boham, 444; Jack Risner, 465; Dennis White, 480; Ron Weiss, 405; Louie Deloy, 435; John Freeman, 408; Norm Green, 486; Larry Sanderson, 407.

500 series: Neil Packard, 528; Gordon Beeman, 530.

## Women's Inter-City League

Standings as of Sept. 24	W	L
Dexter Bowling Club	12	4
Dancer's Store	11	5
Blanche's Beauty Salon	9	7
McLeod Drugs	8	8
Huron Farm Supply	8	8
Sportsman's Tavern	7	9
Ann Arbor Bank	5	11
Central Fibre Products	5	11

Team high series: Blanche's Beauty Salon, 2,379.

Team high game: Blanche's Beauty Salon, 824.

Individual high series: Lorraine Graf, 537; Katie Waggoner, 516; Dorothy Eder, 508; Ruby Brown, 501.

Individual high game: Lorraine Graf, 204; Marian Murray, 194; Ruth Dolezky, 182; Katie Waggoner, 180; Dorothy Eder, 180; Ruby Brown, 178.

## Junior House League

Standings as of Sept. 26	W	L
Chelsea Mfg. Corp.	11	5
The Pub	11	5
Junior House No. 7	10	6
Parvett Sheetmetal	10	6
Shuman Construction	9	7
Gambles	8	8
Altes Beer	8	8
Wolverine Tavern	7	9
Chelsea Spring	7	9
Palmer's T-Birds	6	10
Jiffy Mixers	5	11
Schoenberg's Sinclair	4	12

200 games: R. A. Ringo, 234; C. W. Lake, 213; G. Burnett, 202.

500 series: C. W. Lake, 560; G. Burnett, 530; A. Kaiser, 537; G. Burnett, 530; T. Tibb, 537; R. A. Ringo, 526; C. Popovich, 519; D. Walz, 511; W. Gust, 508; J. Fitzsimmons, 505; C. Schneider, 501.

## Senior House League

Standings as of Sept. 30	W	L
Chelsea Products	13	3
Schneider's Grocery	11	5
Chelsea Grinding Co.	10	6
Sylvan Center	9	7
Wolverine Tavern	8	8
Spaulding Chevrolet	8	8
Chelsea Milling Co.	8	8
Wonder Bar	7	9
GE Boys	6	10
Seitz's Tavern	6	10
Senior House No. 12	5	11
Merkel 49'ers	4	12

500 series: C. Baize, 560; R. Spaulding, 562; C. Schneider, 550; G. Burnett, 552; G. McAtee, 545; E. Harok, 542; E. Schillof, 541; W. Eisenbeiser, 539; J. Jones, 529; S. Policht, 527; S. Slane, 524; R. Murrer, 522; O. Johnson, 510; V. Hafley, 509; H. Burnett, 504; R. Steinhelfer, 500.

200 games: C. Baize, 214; G. Burnett, 211; W. Eisenbeiser, 205; R. Spaulding, 204; J. Jones, 204; E. Harok, 201.

## Chelsea Nite Owl League

Standings as of Sept. 30	W	L
Easter's Men's Wear	11	5
Budwieser	11	5
Reysinger's Plastering	10	6
Turner's Electric	9	7
Waterloo Garage	9	7
Chelsea Dining	9	7
Bud-Mon Agency	8	8
Chelsea State Bank	8	8
Bayer's Automotive	6	10
Kiwanis	6	10
Cavanaugh Lake Store	4	12
Tower Shell	4	12

500 series: J. Elliott, 549; Dave Murphy, 535; R. Koch, 514; L. Bauer, 511.

200 games: J. Elliott, 225; Dave Murphy, 223.

## Women's Bowling Club

Standings as of Sept. 25	W	L
Foster's Men's Wear	12	4
Chelsea Grinding Co.	11	5
Blatz Beer	11	5
Wonder Bar	11	5
Chelsea Lanes	10	6
Don's Std. Service	10	6
Chelsea Milling Co.	9	7
Jiffy Mixes	7	9
Modern Beauty Shop	6	10
Hankard's Pure Oil	5	11
Team No. 11	3	13
Schneider's Grocery	1	15

200 games: A. Boham, 539; R. Hummel, 514; M. Scott, 501.

475 series: B. Christwell, 495; M. Ritter, 485; N. Eisenmann, 485; P. Shoemaker, 476; G. Wheeler, 475.

450 series: M. Ashmore, 466; S. Bradbury, 450.

## Last Week's Area Grid Results

Dexter 26, U. High 13.

Clinton 7, Hudson 0.

Chelsea 45, Manchester 6.

Pinebeck 38, Roosevelt 0.

Willyou Run 47, Saline 0.

Detroit Country Day 14, Whitmore Lake 0.

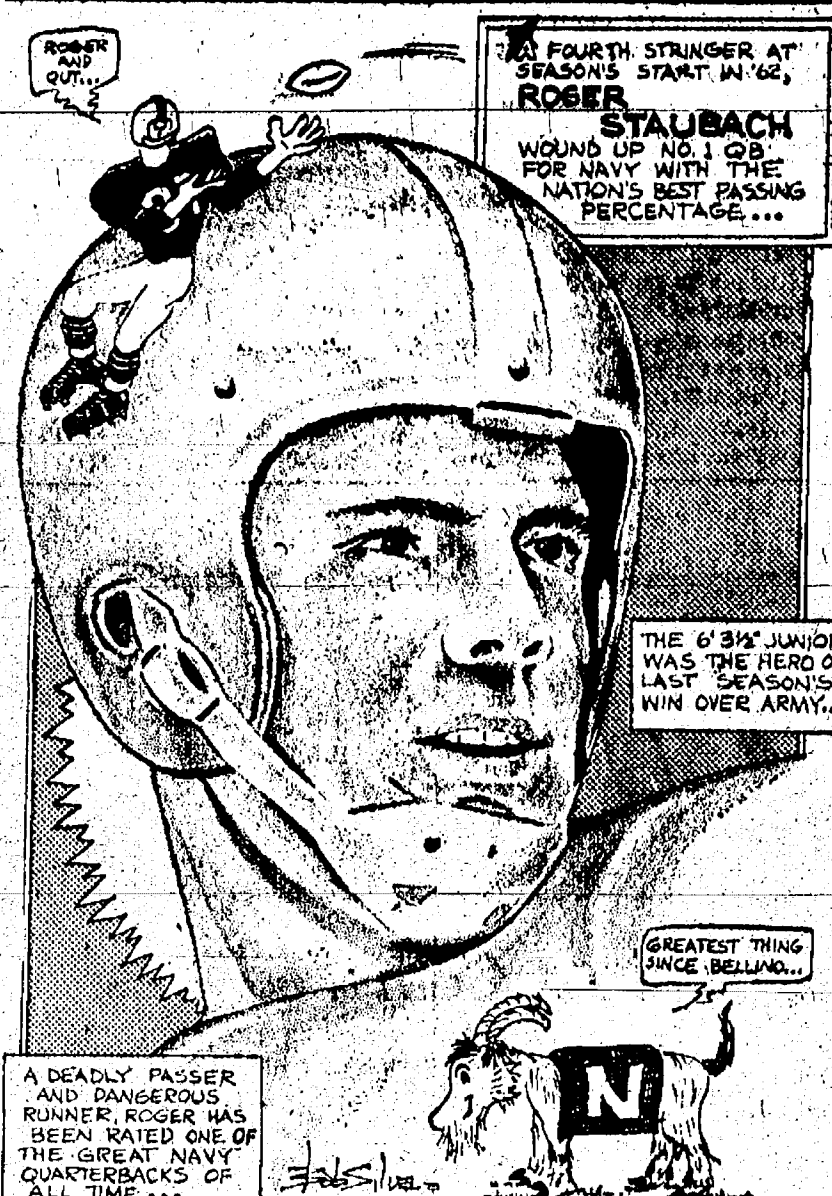
Ann Arbor 32, Jackson 0.

Tecumseh 34, Lincoln 0.

Dearborn 13, South Lyon 0.

Telephone Your Club News To GR 5-3581

# Sports Corner



A DEADLY PASSER AND DANGEROUS RUNNER ROGER WAS SEEN RATED ONE OF THE GREAT NAVY QUARTERBACKS OF ALL TIME...

## Inside SPORT

By Al Silverman, Editor, Sport Magazine

### BALE RUTH REMEMBERED

One of the most sentimental moments in sports for a lot of us old-timers took place fifteen years ago, in June of 1948, when Babe Ruth was honored at Yankee Stadium on the occasion of the 25th anniversary of the Stadium. The Babe stood at home plate, his old No. 3 uniform dangling loosely on what was now a scarecrow body. Not many at the Stadium heard the weak whispers of the dying Ruth, but it was enough to see the Babe standing at home plate, trying to acknowledge the cheers of the crowd. There were tears in Ruth's eyes at that moment and many of the spectators who watched the Babe and remembered his lost glory.

And two months later he was dead.

The occasion for these sentiments is the 15th anniversary of Babe Ruth's death, which is marked in the September issue of SPORT Magazine by a special anniversary tribute to Ruth. In one of those Ruth stories is reprinted words uttered by Ruth in 1947 when he was given a Day at Yankee Stadium and everyone knew he had cancer and that his time was short. Here is what he said, an ungrammatical, but eloquent love poem to baseball.

"You know," the Babe croaked in a voice that sounded like gravel, "this game of baseball of ours comes up from the youth, the only real game, I think, in the world, baseball. You've got to start from way down when you're six or seven years of age. You've got to grow up with it. If successful and if you try hard enough, you're bound to come out on top just like these boys who come to the top now."

THE PACKERS AND THE INTELLECT. Football used to be a contact sport, or a "collision" sport as a particularly blood-thirsty college coach chose to call it. Not any more. Now it is a sport of the intellect, a sport in which a professional coach and a professor of history are heard speaking the same language. For instance, listen to what Green Bay Packers' coach Vince Lombardi recently

# Boysville Operated Solely To Provide Education for Underprivileged Youths

Boysville of Michigan, located at Macon, near Clinton, has been described as "the personification of true christian charity... the gift of laymen throughout the five Michigan dioceses to underprivileged teen-age boys."

Boysville is a non-correctional boarding school for Catholic boys from eighth grade through high school and is directed and staffed by the Brothers of the Holy Cross, C.S.C., under their exceptional teaching standards and those of Michigan parochial schools.

Accredited by the Bureau of School Services, Department of Public Instruction at Lansing, its high school diploma is accredited by the University of Michigan. Students at Boysville are definitely not delinquents; in fact, Boysville's aim is to prevent that stigma for boys who, through lack of normal home conditions in no way their own fault, might be denied proper foundations of religion, education, etc., to assure them a good start in life.

To be admitted to Boysville, the youngsters must fit the category of need of its designated program and, in addition, must themselves enthusiastically want to attend.

During the 15 years since it was founded with the co-operation of the Knights of Columbus, the school has become widely known; many have expressed a desire their sons might attend, only to learn that they do not meet the school's requirements. Boysville was never intended to provide an economical education in the ordinary sense—it is specifically for "underprivileged" boys who need its program.

Admission to Boysville comes ordinarily from parents or guardians or from social agencies. Applicants must be able to do normal

school work—in addition to academic subjects leading to graduation, a wood shop and metal shop are available.

Included in the program at the school are guidance, recreation, band, athletics and social events.

In addition, each boy is assigned chores on a monthly basis and is expected to co-operate in maintaining discipline.

Knights of Columbus of Michigan, staunch supporters of Boysville, have donated more than one and one-half million dollars to meet operating costs since the school was founded in 1948. Knights of Columbus currently are contributing approximately three times as much as the first year's contribution of \$84,193.10 listed for the fiscal year ending June 30, 1949.

Boysville is based on a philosophy of prevention, its motto being, "It is better to build a boy to mend a man."

A review of case histories of Boysville graduates through the look but for Boysville, recalls statement made by the late Cardinal Mooney at the dedication of Boysville Oct. 24, 1948: "The monuments we build at Boysville are in the souls of boys."

Michigan's inland waters exceed the size of Rhode Island. The average size of our 11,038 inland lakes is 67 acres, 400 are over 200 acres in size, and 15 cover over eight square miles.

Michigan's inland waters exceed the size of Rhode Island. The average size of our 11,038 inland lakes is 67 acres, 400 are over 200 acres in size, and 15 cover over eight square miles.

Michigan's inland waters exceed the size of Rhode Island. The average size of our 11,038 inland lakes is 67 acres, 400 are over 200 acres in size, and 15 cover over eight square miles.

Michigan's inland waters exceed the size of Rhode Island. The average size of our 11,038 inland lakes is 67 acres, 400 are over 200 acres in size, and 15 cover over eight square miles.

Michigan's inland waters exceed the size of Rhode Island. The average size of our 11,038 inland lakes is 67 acres, 400 are over 200 acres in size, and 15 cover over eight square miles.

Michigan's inland waters exceed the size of Rhode Island. The average size of our 11,038 inland lakes is 67 acres, 400 are over 200 acres in size, and 15 cover over eight square miles.

Michigan's inland waters exceed the size of Rhode Island. The average size of our 11,038 inland lakes is 67 acres, 400 are over 200 acres in size, and 15 cover over eight square miles.

Michigan's inland waters exceed the size of Rhode Island. The average size of our 11,038 inland lakes is 67 acres, 400 are over 200 acres in size, and 15 cover over eight square miles.

Michigan's inland waters exceed the size of Rhode Island. The average size of our 11,038 inland lakes is 67 acres, 400 are over 200 acres in size, and 15 cover over eight square miles.

Michigan's inland waters exceed the size of Rhode Island. The average size of our 11,038 inland lakes is 67 acres, 400 are over 200 acres in size, and 15 cover over eight square miles.

Michigan's inland waters exceed the size of Rhode Island. The average size of our 11,038 inland lakes is 67 acres, 400 are over 200 acres in size, and 15 cover over eight square miles.

Michigan's inland waters exceed the size of Rhode Island. The average size of our 11,038 inland lakes is 67 acres, 400 are over 200 acres in size, and 15 cover over eight square miles.

Michigan's inland waters exceed the size of Rhode Island. The average size of our 11,038 inland lakes is 67 acres, 400 are over 200 acres in size, and 15 cover over eight square miles.

Michigan's inland waters exceed the size of Rhode Island. The average size of our 11,038 inland lakes is 67 acres, 400 are over 200 acres in size, and 15 cover over eight square miles.

Michigan's inland waters exceed the size of Rhode Island. The average size of our 11,038 inland lakes is 67 acres, 400 are over 200 acres in size, and 15 cover over eight square miles.

Michigan's inland waters exceed the size of Rhode Island. The average size of our 11,038 inland lakes is 67 acres, 400 are over 200 acres in size, and 15 cover over eight square miles.

## Boat Owners CHECK WITH US FOR WINTER STORAGE OF YOUR OUTBOARD MOTOR and BOAT

A Factory Trained Mechanic Will Service Your OUTBOARD MOTOR

BRING YOUR MOTOR HERE... YOU'LL BE GLAD YOU DID. WE SERVICE ALL MAKES AND MODELS. PRICES ARE REASONABLE... WORK GUARANTEED.

CHLSEA MOTORS INC.

3231 Manchester Rd. Phone 475-8626 CLAIR GILBERT, Owner.

CHLSEA MOTORS INC.

3231 Manchester Rd. Phone 475-8626 CLAIR GILBERT, Owner.

CHLSEA MOTORS INC.

3231 Manchester Rd. Phone 475-8626 CLAIR GILBERT, Owner.

CHLSEA MOTORS INC.

3231 Manchester Rd. Phone 475-8626 CLAIR GILBERT, Owner.

CHLSEA MOTORS INC.

3231 Manchester Rd. Phone 475-8626 CLAIR GILBERT, Owner.

CHLSEA MOTORS INC.

3231 Manchester Rd. Phone 475-8626 CLAIR GILBERT, Owner.

CHLSEA MOTORS INC.

3231 Manchester Rd. Phone 475-8626 CLAIR GILBERT, Owner.

CHLSEA MOTORS INC.

3231 Manchester Rd. Phone 475-8626 CLAIR GILBERT, Owner.

CHLSEA MOTORS INC.

3231 Manchester Rd. Phone 475-8626 CLAIR GILBERT, Owner.

CHLSEA MOTORS INC.

3231 Manchester Rd. Phone 475-8626 CLAIR GILBERT, Owner.

CHLSEA MOTORS INC.

3231 Manchester Rd. Phone 475-8626 CLAIR GILBERT, Owner.

CHLSEA MOTORS INC.

3231 Manchester Rd. Phone 475-8626 CLAIR GILBERT, Owner.

CHLSEA MOTORS INC.

3231 Manchester Rd. Phone 475-8626 CLAIR GILBERT, Owner.

CHLSEA MOTORS INC.

3231 Manchester Rd. Phone 475-8626 CLAIR GILBERT, Owner.

CHLSEA MOTORS INC.

## SERVICE WITH SMILE by DON SCHOENBERG



SCHOENBERG'S SINCLAIR SERVICE ARE CONTINUALLY TRYING TO CONVINCE NEW SERVICE FOR YOUR PLEASURE.

GIVE A KID A BRAKE!

A child can't always stop in time, but you can — if your brakes are good. Let us adjust and tighten your brakes. If they need fluid, we'll put in Sinclair Heavy Duty Hydraulic Brake Fluid. Drive in today — drive out with safe brakes. At Sinclair we care... about you... about your car.

Sinclair

Schoenberg's SERVICE

FREE Pickup 475-8580

M-52 SOUTH - CHELSEA

Sinclair

Schoenberg's SERVICE

FREE Pickup 475-8580

## MILK THE PROTEIN

For quick refueling, serve milk at snack-time

There'll be plenty of refueling, and re-filling, too, when milk makes its appearance on the snack table. The kids just love it!

Milk is everyone's favorite health drink!

WEINBERG DAIRY

QUALITY PASTEURIZED DAIRY PRODUCTS

Old US-12 Phone GR 5-5771

WEINBERG DAIRY

QUALITY PASTEURIZED DAIRY PRODUCTS

## What's new? This year only your Ford Dealer can say 'Everything!'



# RURAL CORRESPONDENCE

Items of Interest About People You Know As Gathered By Correspondents

## OUR MILE LAKE

Mrs. Alvin Wahr and family of Helm Rd., were Sunday dinner guests of Mr. and Mrs. Ezra Hinnerger.

Mrs. Jean Lindeman and Mrs. Ernest Griebach, of Saline, attended the funeral of Mrs. Hattie Fischer, in Chelsea, Thursday afternoon.

Mr. and Mrs. Robin Wright and son, of Lima Center, entertained Sunday at a birthday celebration honoring his mother, Mrs. Burton Wright and sister-in-law, Mrs. Gary Wright. Guests attending were Mr. and Mrs. Gary Wright and family, Mr. and Mrs. Donald Wright and family, Mr. and Mrs. Burton Wright and family and Mrs. Floyd Gentner.

Mr. and Mrs. Alvin Brassow were Sunday visitors of Mr. and Mrs. Harold Bamow of Detroit.

Mrs. Emory Pickell were Mrs. Robert Teuchout and Mrs. Edna Palmer both of Battle Creek, also Mr. and Mrs. Paris Giltner, Mr. and Mrs. William Landis and family, Mr. and Mrs. Wilber Lee and family and Mr. and Mrs. Harold Corser and family.

Frank Lee was a visitor at the Max Kalmbach home Thursday afternoon.

Mrs. Edna Young and Mrs. Beatrice Corser attended the Hillsdale fair Thursday.

**NORTH FRANCISCO**

Mr. and Mrs. Chester Davis and family, of Toledo, O., and Mr. and Mrs. Henry Loveland and family, of Michigan Center were Sunday birthday dinner guests honoring Mrs. Chester Davis, at the home of her parents, Mr. and Mrs. Chester Notten and aunt, Miss Mabelle Notten.

Mrs. Alice Escher and son were Sunday afternoon callers of Mrs. Eva Notten.

Mrs. Nina Wahl called on her sister, Mrs. Fred Fisher of Jackson, Sunday afternoon.

Mr. and Mrs. Douglas Kennedy and family were Sunday evening callers of her mother, Mrs. Nina Wahl.

Mr. and Mrs. Roy Miller called on Esther Waddell and George Zeeb Wednesday evening.

Sunday, Mrs. Roy Miller attended a dinner of the Second District Meeting of the American Legion Auxiliary in Ann Arbor. In the evening she and Mr. Miller called on Mr. and Mrs. Max Hoppe and Mr. and Mrs. Thomas Stock and family.

Mr. and Mrs. Clarence Lehman attended the Hillsdale Fair on Thursday.

Mrs. Vera Haschle of Dexter was a Sunday evening caller of Mr. and Mrs. Clarence Lehman. She also called on the Wayne Harveys.

Last week callers of Mrs. Leonard Loveland were Harley Loveland, Mr. and Mrs. Dale Loveland and daughter, Barbara, LeRoy Loveland and son, Tommy, and Mrs. Vera Heim.

Mr. and Mrs. Walter Riemenschneider and Mrs. Bertha Kate Riemenschneider and Mrs. Helen Leggett were Wednesday morning callers of Mr. and Mrs. Nelson Peterson.

Saturday afternoon Mr. and Mrs. Walter Riemenschneider, Mrs. Bertha K. Riemenschneider and Mrs. Nelson Peterson called on Mr. and Mrs. Arthur Peterson of Cavanaugh Lake.

Arnold Escher spent Monday and Tuesday with Mr. and Mrs. Nelson Peterson and Mr. and Mrs. Clifford Peterson.

Mrs. Norman Peterson and family.

## EYES EXAMINED and GLASSES FITTED

For Appointment Call GR 5-5431

**A. PALMER, M.D.**  
110 E. Middle St.  
Chelsea, Mich.

**- NOW OPEN -**

## Ann Arbor Livestock Sales

**SALE EVERY MONDAY - 6:30 p.m.**

4 miles west of Ann Arbor on Jackson Rd.  
(at the old Dexter Livestock Yards)

**We Have Buyers For**  
**HOGS - CALVES - LAMBS**  
**FAT CATTLE and COWS**

Truckers Available — Phone Ann Arbor 665-4777

# PUBLIC AUCTION

Due to the death of my husband I will sell the following personal property at public auction at the farm located 5 miles east of Chelsea on Chelsea-Dexter road to Steinbach road, south 1/2 mile or 3 miles southwest of Dexter on Chelsea road to Steinbach road, south 1/2 mile.

**Tuesday, October 8 1:00 p.m.**

Phone Stockbridge 851-2172 **Price Brothers Auctioneers** Phone Stockbridge 851-2172

## 30 Dairy Cows & Heifers 30

Holstein cow 5 yrs. old fresh Aug. 5  
Holstein cow 2 yrs. old bred July 4  
Holstein cow 3 yrs. old, fresh, open  
Holstein cow 5 yrs. old bred July 31  
Holstein cow 2 yrs. old, fresh July 19, open  
Holstein cow 6 yrs. old bred June 11  
Holstein cow 7 yrs. old bred May 30  
Holstein cow 3 yrs. old fresh Aug. 28  
Holstein cow 5 yrs. old bred Aug. 29  
Holstein cow 5 yrs. old bred July 4  
Holstein cow 3 yrs. old fresh Aug. 5  
Holstein cow 6 yrs. old bred Aug. 3  
Holstein cow 5 yrs. old fresh Aug. 15  
Holstein cow 2 yrs. old fresh July 16  
Holstein cow 5 yrs. old bred March 8  
Holstein cow 6 yrs. old fresh July 13  
Holstein cow 6 yrs. old bred Jan. 25  
Holstein cow 5 yrs. old bred Jan. 30  
Holstein cow 5 yrs. old, fresh, open  
Holstein cow 6 yrs. old fresh Aug. 23  
Holstein cow 5 yrs. old bred Feb. 19  
Holstein heifer 2 years old bred Feb. 25  
Holstein heifers coming 2 yrs. old, open  
Holstein heifer 12 months old  
Holstein heifers 7-8 months old, vaccinated

McCormick No. 64 combine with motor, real nice condition  
Woods Bros. single row corn picker, good condition  
1962 John Deere corn planter, 3 point hitch, like new  
New Holland No. 55 rollover side rake  
Ford hay baler PTO  
1961 New Idea 7 ft. trailer mower  
David-Bradley rubber tired wagon with nearly new box  
New Idea 12A manure spreader  
Ford lift type disc 10 ft. cultipacker  
Rubber tired wagon and rack  
11 hole grain drill  
E-Z Flo manure spreader, 10 ft.  
3 section harrow  
Iron wheel wagon and bunk feeder  
Hammermill, nice condition  
16 ft. grain auger and motor  
Buzz saw, front mount  
60 ft. drive belt 2 stock tanks  
Quantity small articles

**FARM IMPLEMENTS, ETC.**

1952 Ford tractor, been completely overhauled this year  
Deere 2-14 in. radex plow, new bottoms  
Massey-Harris 101 Jr. tractor and cultivator, good rubber

**DAIRY EQUIPMENT**

DeLaval 8 can milk cooler  
2 Farm Master milker units  
18 milk cans Wash tubs  
10 gal. water heater  
Farm Master pump and motor Can rack

**TRUCK**

Ford 1 1/2 ton truck with stock rack and grain sides

Not Responsible for Accidents Day of Sale.  
TERMS: Cash, or bank terms available National Bank of Detroit, Plymouth office, Mr. Kehrle.

## Mrs. Joanne Petroit, Owner

## from HISTORY'S SCRAPBOOK

**IMPORTANT DATES AND EVENTS FROM YESTERYEARS**

The first U.S. district court was opened at Green Bay, Wis., by Judge Duane Doty, October 4, 1824. The Great Republic, world's largest merchantman was launched, October 4, 1853.

Antioch, first co-educational college opened, October 5, 1853.

St. Patrick's Cathedral, New York City, was dedicated October 5, 1910.

Famed singer Jenny Lind was born, October 6, 1820. Regular steamboat service was established between New York and California, October 6, 1849.

Brazil commemorates its independence day of 1882 on October 7. "We the People" was first broadcast, October 7, 1937.

The great Chicago fire took place on the evening of October 8, 1871. Corporal Alvin York became a national hero by capturing German machine gun crews, October 8, 1918.

The first college commencement in America was held at Harvard, October 9, 1636. Alaska was transferred to the United States, October 9, 1867.

The first commercial balloon ascent was made, October 10, 1828. The U.S. Naval Academy at Annapolis opened, October 10, 1845.

**Production Report Told For Area Holstein Cows**

Registered Holstein cows from this area are prominently mentioned in an official production testing report received today from Holstein-Friesian Association of America headquarters at Brattleboro, Vermont.

Claymores (Piebe Lochinvar), 3600251, a 10-year-old owned by Elton Frey, Ann Arbor, produced 15,571 lbs. milk and 651 lbs. butterfat in 241 days.

Whippoorwill Mutual Nellie, 4399204, a six-year-old owned by George Macomber & Sons, Ann Arbor, produced 17,594 lbs. milk and 652 lbs. butterfat in 344 days.

According to the national Holstein organization, the new production figures compare to an annual output of 7,211 lbs. of milk and 270 lbs. of butterfat by the average U. S. dairy cow.

1963 auto companies' equipment and plant investments in Michigan a billion dollars.

No point in Michigan is more than 85 miles from one of the four bordering Great Lakes.

## Servicemen's Corner

### Darryl, Gary Carr Undergoing Navy Training at Great Lakes

Great Lakes, Ill. — Darryl L. Carr, 17 and Gary D. Carr, 18, sons of Mr. and Mrs. Gerald L. Carr of 9021 Beeman Rd., Chelsea, Mich., are undergoing nine weeks training at the Naval Training Center, Great Lakes, Ill.

The program includes naval history and organization, ordnance and gunnery, seamanship and damage control, basic shipboard routine, sentry duty and military drill, physical fitness, swimming, first aid and survival.

During their training recruits receive tests and interviews which determine their future assignments in the Navy. Upon completing the indoctrination period they are assigned to service schools for technical instruction or to ships or shore stations for on-the-job training in a specialized Navy rating.

### Airman David Beeman Serving Aboard Navy Carrier Kearsarge

USS Kearsarge—David E. Beeman, airman, USN, son of Mr. and Mrs. Orson Beeman of 9015 Beeman Rd., Chelsea Mich., is serving aboard the antisubmarine aircraft carrier USS Kearsarge which recently spent several days in Kahalo, a small Japanese port rarely visited by U.S. ships.

Kearsarge is presently deployed with the Seventh Fleet in the Far East.

She arrived Sept. 14 at Hako, date, located on Hokkaido, Japan's northernmost island.

Currently on her eighth Far

## East cruise, Kearsarge joined the Seventh Fleet in June.

Her mission is protecting Pacific Fleet units from the threat of enemy submarines. Kearsarge, however, served double duty as a recovery ship for the final two astronauts of the Project Mercury series. In October 1962 she recovered Navy Cdr. Walter Schirra from mid-Pacific waters and repeated the performance in May 1963 by picking up Air Force Maj. Gordon Cooper.

Kearsarge normally operates out of Long Beach, Calif.

## SAVES CHILD THEN DIES

Long Island, N. Y. — Meldon Rhew, 64, was sitting on a beach with his wife when he heard a young girl cry for help. She had fallen off a rubber raft.

Rhew swam out and put the girl on the raft, pushed it toward the shore and said, "You've got to help yourself now, I'm dying."

The girl made it to shore, but Rhew was found a few minutes later in the water dead of a heart attack.

## Cafeteria Menu

Chelsea High school cafeteria menus for next week, subject to change without notice, if necessary, are as follows:

Monday, Oct. 7—Sloppy Joes, cheese, wax beans, apricots.

Tuesday, Oct. 8—Salisbury steak, mixed vegetables, peaches.

Wednesday, Oct. 9—Pork and gravy, mashed potatoes, sweet potatoes, cottage pudding.

Thursday, Oct. 10—Fiesta rice, whole kernel corn, apple pie.

Friday, Oct. 11—Pizza, scalloped carrots, fruit compote.

All menus include some form of bread and milk.

## Sports Quiz Answers . . .

1. The Boston Red Sox.
2. The United States, 93 to 22.
3. September 26th-28th.
4. Joe Pepitone.
5. 43.

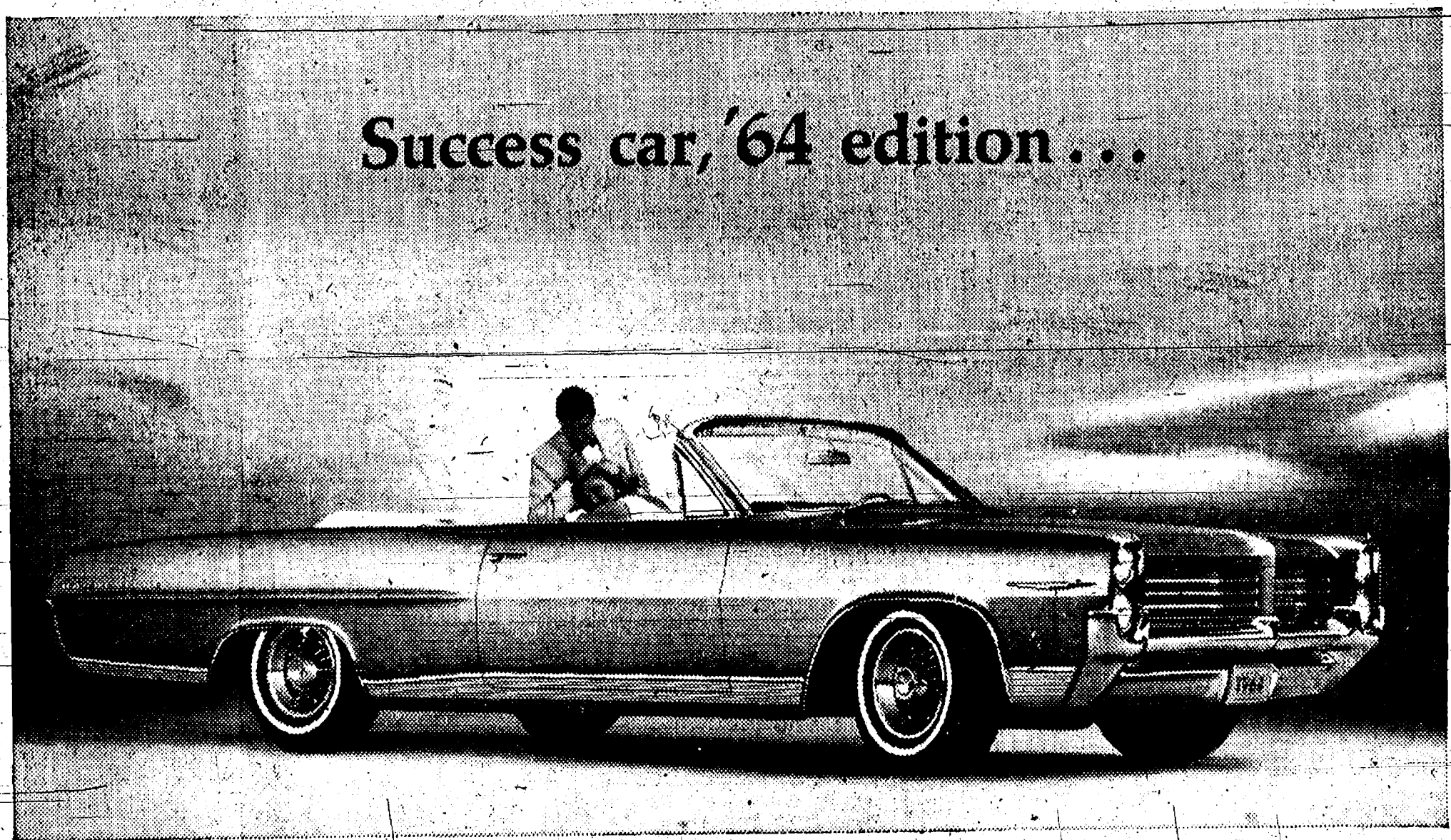
## GOOD BRAKES NECESSARY!

Be sure your car is set for safe driving and safe stopping. Come in soon and let us check your brakes — put them in "tip top" condition.

**COMPLETE ONE-STOP SERVICE**

## Bill Brown's Super Service

GOOD GULF PRODUCTS  
295 SOUTH MAIN ST. PHONE GR 9-1311

**Success car, '64 edition . . .**

The car that answers the question, "After their '63 model, what in the world will Pontiac do for '64?"

It wasn't easy, topping our super-successful '63. But we did it, with trim new styling • handsome new interiors • a smoother, quieter ride • Wide-Track stability • 389-cu.in. Trophy V-8 power in every model • Isn't this what other cars wish they looked and acted like and don't? '64 Pontiac Pontiac!



plus a whole new kind of Pontiac.

If you've been buying the same low-priced car time after time, get ready to break the habit.

What's new with Tempest for '64? Practically everything. New 215-cubic inch in-line 6 • longer, roomier body • wider Wide-Track • new smooth-riding suspension • new brakes • new steering • new frame • If a car like this won't break that habit, nothing will. Check your dealer! '64 Pontiac Tempest!

SEE THE ONLY DEALER WHO SELLS THE WIDE-TRACK CARS—YOUR AUTHORIZED PONTIAC DEALER

## HARPER SALES & SERVICE, INC.

118 W. MIDDLE CHELSEA, MICH.







## SCIENCE TOPICS

ECHO II, a larger and stronger version of the first U.S. balloon communications satellite, is a 185-centimeter mylar plastic bag coated with aluminum. It will be launched into an orbit some 700 miles from earth later this year and should be clearly visible at dawn and dusk. Echo I, launched Aug. 12, 1960, is torn and almost deflated but still aloft. SNAKE kills at least 40,000 people a year, the World Health Organization estimates. Perhaps 70 percent of the fatalities occur in Asia where, WHO says, every 100 of poisonous snake may be found. Of 2,500 varieties, only 200 are considered dangerous to humans.

SYNTHETIC SMOKE in an aerosol can is on the market for beekeepers who wish to chase their bees away. While collecting bees, THE WORLD'S smallest and probably oldest planetarium sphere 15 feet in diameter has been an attraction for 50 years at the Chicago Academy of Sciences. The rotating globe is the only perforated planetarium in America. To the audience seated in the dark on tiny chairs (seats 15), the bright points of light from the outside appear celestial bodies.

BOGS get ulcers from "citrified" conditions, according to Dr. G. Harmon of the University of Illinois. They're still raised on diets of course, but some spend their lives jammed inside buildings with concrete doors like apartment dwellers. The swine nutrition specialist says he doubts pigs had ulcers when they were a root for themselves in the fields.



**DON'T GET CAUGHT With Your F-O-G\* DOWN**  
Warp's FLEX-O-GLASS, that is. Cover all openings NOW (doors, windows, porches) that get cold in winter drafts. Just cut Warp's FLEX-O-GLASS with shears, tack over screens or frames for low-cost winter protection. Warp's genuine, crystal-clear FLEX-O-GLASS is for years at a fraction the cost of glass. Only 8¢ a square yard at your local hardware or lumber dealer.

**READY MIX CONCRETE**  
Radio Dispatched Trucks

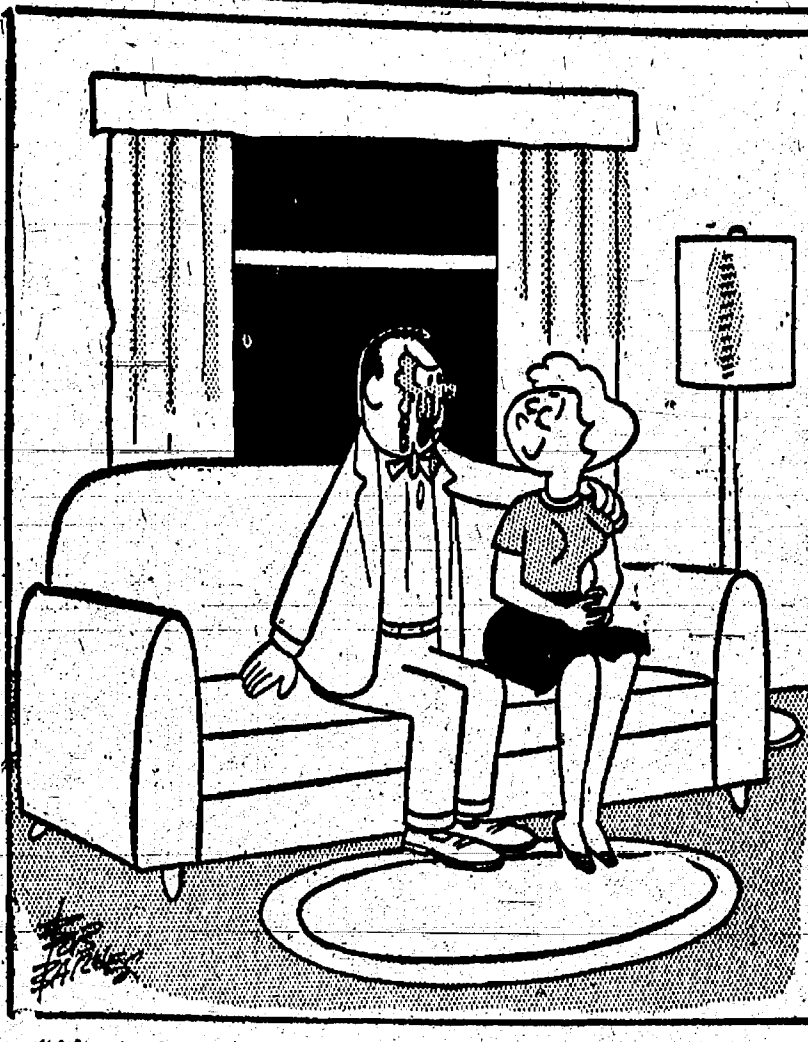


Finest quality concrete made to your specifications in our new automatic plant and delivered to your job location.

Call CHELSEA GR 9-2712 and a Radio-Dispatched Truck can be on its way.

**KLUMPP BROS. GRAVEL CO.**  
Phone Chelsea GR 9-2712  
4950 Loveland Road Grass Lake, Mich.

## Laff Of The Week



"After we're married I must insist you give up bubble gum!"

## State's School Buses Travel 62 Million Miles Each Year

In September, more than half a million school children will once again travel to and from Michigan's schoolhouses in more than 6,300 buses, which travel an estimated 62,000,000 miles annually.

According to Secretary of State James M. Hare, nearly all states are trying to adjust their laws so that there will, some day, be a uniform code from coast to coast. Michigan, too, is constantly improving its school bus laws so that they provide better protection for both motorists and children.

"The law states that vehicles approaching or overtaking a school bus which is picking up or discharging passengers must stop 10 feet to the front or rear of the bus. Act 249, Public Acts of 1963, provides that the school vehicles be equipped with a special front mirror which enables the driver to see in front of the bus as well as along the side of the bus."

"The law is not one-sided. Hare pointed out. There are specific

things which the schools and bus drivers must provide to insure the safety of their charges as well as specific rules motorists must obey for the same reason.

Here are some of the most important elements of the school bus law:

"No school bus driver shall stop his bus for the purpose of receiving or discharging passengers unless such bus is clearly visible in its stopped position to approaching or overtaking drivers of vehicles for a distance of at least 500 feet."

"The driver of a vehicle upon any highway which has been divided into two roadways by leaving an intervening space, or by a physical barrier, or clearly indicated dividing sections so constructed as to impede vehicular traffic, need not stop upon meeting a school bus which has stopped across the dividing space, barrier, or section."

"Every school bus shall, in addition to any other equipment required by law, be equipped with signal lamps mounted as high and widely spaced laterally as practicable which shall be capable of displaying to the front two alternately flashing red lights located at the same level and to the rear two alternately flashing red lights located at the same level. Said light shall have sufficient intensity to be visible from a distance of at least 500 feet in normal sunlight and shall be actuated by the driver of said school bus whenever but only whenever such vehicle is stopped or is about to stop for the purpose of receiving or discharging school children."

"Have said, 'one of the most important facts the driver must keep in mind is that children are unpredictable. When you are driving in an area where children are being picked up or discharged by a school bus, you must watch for children who may suddenly dart across the street. Watch for school buses which may be slowing or stopped; and be aware of traffic and road conditions in relationship to the speed you are traveling.'"

"When approaching a bus that is either stopping or has stopped to pick up or discharge children, motorists must halt at least 10 feet behind the bus even if the bus is not on the traveled portion of the highway."

The most common accident that occurs where school buses have stopped or are stopping is the rear end collision and the run-off-roadway accident. These are caused by following too closely and excessive speed. It is the motorist's responsibility to drive in such a manner so as to have complete control of his car at all times.

Have noted that the problems associated with the school bus emphasize the importance of being alert and driving at careful and prudent speeds at all times so that "one could stop to avoid accidents within the assured clear distance ahead."

## + Services in Our Churches +

**FIRST METHODIST CHURCH**  
The Rev. James A. Craig, Pastor  
Sunday, Oct. 6—  
World Wide Communion Sunday.  
10:00 a.m.—Nursery, kindergarten, primary and junior department Sunday school classes.  
10:00 a.m.—Morning worship service.  
11:00 a.m.—Fellowship coffee hour.  
11:10 a.m.—Adult church school classes.

**CONGREGATIONAL CHURCH**  
(United Church of Christ)  
The Rev. R.A.J. Livingston, Pastor  
Thursday, Oct. 3—  
7:30 p.m.—Choir rehearsal.  
Sunday, Oct. 6—  
10:00 a.m.—Church school and worship service. Observance of World Wide Communion Sunday.  
Monday, Oct. 7—  
12 noon—Meeting of area ministers and their wives at Emmanuel church, Manchester. Discussion topic: Evangelism.  
8:00 p.m.—Trustees meeting.  
Thursday, Oct. 10—  
8:00 a.m.—Chelsea ministers meeting at the Methodist Home.

**ST. THOMAS EVANGELICAL LUTHERAN**  
The Rev. H. Spomer, Pastor  
Freedom Township  
Sunday, Oct. 6—  
10:00 a.m.—Worship service.  
11:00 a.m.—Sunday school.

**ST. BARNABAS EPISCOPAL CHURCH**  
20500 Old US-12  
The Rev. J. R. Smucker, Vicar  
Sunday, Oct. 6—  
8:00 a.m.—Holy Communion.  
9:00 a.m.—Church school.  
10:00 a.m.—Holy Communion.  
Wednesday, Oct. 9—  
7:00 a.m.—Holy Communion followed by breakfast.  
10:00 a.m.—Holy Communion.  
Thursday, Oct. 10—  
6:30 p.m.—Family covered-dish supper.

**ZION LUTHERAN CHURCH**  
(Rogers Corners)  
The Rev. C. J. Renner, Pastor  
Thursday, Oct. 3—  
8:00 p.m.—Brotherhood meeting and men's shuffleboard. The pastor will show slides of the Lutheran Seminary.  
Saturday, Oct. 5—  
9:30 a.m.—Junior catechism class.  
10:45 a.m.—Senior catechism class.  
Sunday, Oct. 6—  
9:00 a.m.—Sunday school.  
10:15 a.m.—Worship service. Sermon topic: "Dores, the Woman of Good Works."  
2:30 p.m.—8:00 p.m.—Sunday school teachers institute at Maybee.

**ST. MARY'S CATHOLIC CHURCH**  
The Rev. Fr. Francis Maliszewski  
Sunday, Oct. 6—  
Masses at 8:30 a.m., 9:00 a.m., 10:00 a.m. and 11:30 a.m.

**BETHEL EVANGELICAL AND REFORMED CHURCH**  
(United Church of Christ)  
Freedom Township  
The Rev. T. W. Menzel, Pastor  
Sunday, Oct. 6—  
10:00 a.m.—Worship service in charge of James Helm.  
11:00 a.m.—Sunday school.

**NORTH LAKE METHODIST CHURCH**  
The Rev. John Jolley  
Sunday, Oct. 6—  
9:30 a.m.—Worship service.  
10:30 a.m.—Sunday school.  
MYF meeting the first Sunday of the month at 6:00 p.m.

**MT. HOPE METHODIST CHURCH**  
Cor. Seymour and Mt. Hope Rds.  
The Rev. Karl H. Keefe, Pastor  
Saturday, Oct. 5—  
9:30 a.m.—Children's and junior choir rehearsal.  
Sunday, Oct. 6—  
11:15 a.m.—Morning worship service. Loud speakers have been installed outside of the church so that those attired in camping clothes and parents with small children may sit in their cars if they prefer. World Wide Communion Sunday. Sermon topic: "The Significance of Communion."  
10:30 a.m.—Sunday school. Mrs. Ardel Landis, superintendent. The church is open every day from 2 to 5 p.m. for prayer and meditation.

**ST. JOHN'S EVANGELICAL AND REFORMED CHURCH**  
(United Church of Christ)  
(Rogers Corners)  
The Rev. J. Tracy Luke, Pastor  
Sunday, Oct. 6—  
10:00 a.m.—Sunday school.  
11:00 a.m.—Worship service.

**GREGORY BAPTIST CHURCH**  
The Rev. Robert Ramsayer, Pastor  
Sunday, Oct. 6—  
10:00 a.m.—Sunday school.  
11:00 a.m.—Morning worship.

**CHURCH OF CHRIST**  
18881 Old US-12, East  
Murray S. Hudgins, Minister  
Sunday, Oct. 6—  
10:00 a.m.—Bible study.  
11:00 a.m.—Worship service.  
6:00 p.m.—Worship service.  
Bible study each Thursday at 7 p.m.

**NORTH SHARON COMMUNITY BIBLE CHURCH**  
Paul Collins, Interim Pastor  
Sylvan and Washburn Roads  
Sunday, Oct. 6—  
10 a.m.—Sunday school.  
11 a.m.—Worship service.  
7 p.m.—Evening service.  
Prayer meeting each Wednesday evening at 7:30 o'clock.

**FIRST CHURCH OF CHRIST SCIENTIST**  
1883 Washtenaw Ave., Ann Arbor  
Sunday, Oct. 6—  
9:30 a.m.—Sunday school.  
11:00 a.m.—Morning service. Bible lesson topic: "Unreality." Golden text: "Judge not according to the appearance, but judge righteous judgment." John 7:24.

**SALEM GROVE METHODIST CHURCH**  
The Rev. John Jolley, Pastor  
Sunday, Oct. 6—  
10:00 a.m.—Sunday school.  
11:15 a.m.—Worship service.

**FIRST ASSEMBLY OF GOD CHURCH**  
14900 Old US-12  
The Rev. Harold S. Bilotta, Pastor  
Sunday, Oct. 6—  
9:45 a.m.—Sunday school.  
11:00 a.m.—Worship service.  
7:00 p.m.—Evening service.  
Prayer meeting and Bible study each Thursday, 7:30-8:30 p.m.

**ST. JOHN'S EVANGELICAL AND REFORMED CHURCH**  
(United Church of Christ)  
(Francisco)  
The Rev. J. Tracy Luke, Pastor  
Sunday, Oct. 6—  
9:30 a.m.—Worship service and Sunday school.  
Mid-week Bible study classes began Sept. 18, 8-9 p.m., for all interested persons of the community.

**ST. PAUL'S EVANGELICAL AND REFORMED CHURCH**  
(United Church of Christ)  
The Rev. Paul M. Schnake, Pastor  
Thursday, Oct. 3—  
7:00 p.m.—Mailing committee.  
7:30 p.m.—Junior choir rehearsal.  
8:30 p.m.—Senior choir rehearsal.  
9:30 a.m.—Youth choir rehearsal.  
10:00 a.m.—Confirmation class.  
Sunday, Oct. 6—  
World Wide Communion Sunday.  
8:15 a.m.—Early Communion service.  
9:30 a.m.—Church school.  
10:45 a.m.—Second Communion service.  
Nursery available during both services.  
7:00 p.m.—Young People's meeting.

**ST. MARY'S CATHOLIC CHURCH**  
The Rev. Fr. Francis Maliszewski  
Sunday, Oct. 6—  
Masses at 8:30 a.m., 9:00 a.m., 10:00 a.m. and 11:30 a.m.

**BETHEL EVANGELICAL AND REFORMED CHURCH**  
(United Church of Christ)  
Freedom Township  
The Rev. T. W. Menzel, Pastor  
Sunday, Oct. 6—  
10:00 a.m.—Worship service in charge of James Helm.  
11:00 a.m.—Sunday school.

**NORTH LAKE METHODIST CHURCH**  
The Rev. John Jolley  
Sunday, Oct. 6—  
9:30 a.m.—Worship service.  
10:30 a.m.—Sunday school.  
MYF meeting the first Sunday of the month at 6:00 p.m.

**MT. HOPE METHODIST CHURCH**  
Cor. Seymour and Mt. Hope Rds.  
The Rev. Karl H. Keefe, Pastor  
Saturday, Oct. 5—  
9:30 a.m.—Children's and junior choir rehearsal.  
Sunday, Oct. 6—  
11:15 a.m.—Morning worship service. Loud speakers have been installed outside of the church so that those attired in camping clothes and parents with small children may sit in their cars if they prefer. World Wide Communion Sunday. Sermon topic: "The Significance of Communion."  
10:30 a.m.—Sunday school. Mrs. Ardel Landis, superintendent. The church is open every day from 2 to 5 p.m. for prayer and meditation.

**ST. JOHN'S EVANGELICAL AND REFORMED CHURCH**  
(United Church of Christ)  
(Rogers Corners)  
The Rev. J. Tracy Luke, Pastor  
Sunday, Oct. 6—  
10:00 a.m.—Sunday school.  
11:00 a.m.—Worship service.

**GREGORY BAPTIST CHURCH**  
The Rev. Robert Ramsayer, Pastor  
Sunday, Oct. 6—  
10:00 a.m.—Sunday school.  
11:00 a.m.—Morning worship.

**CHURCH OF CHRIST**  
18881 Old US-12, East  
Murray S. Hudgins, Minister  
Sunday, Oct. 6—  
10:00 a.m.—Bible study.  
11:00 a.m.—Worship service.  
6:00 p.m.—Worship service.  
Bible study each Thursday at 7 p.m.

**NORTH SHARON COMMUNITY BIBLE CHURCH**  
Paul Collins, Interim Pastor  
Sylvan and Washburn Roads  
Sunday, Oct. 6—  
10 a.m.—Sunday school.  
11 a.m.—Worship service.  
7 p.m.—Evening service.  
Prayer meeting each Wednesday evening at 7:30 o'clock.

**FIRST CHURCH OF CHRIST SCIENTIST**  
1883 Washtenaw Ave., Ann Arbor  
Sunday, Oct. 6—  
9:30 a.m.—Sunday school.  
11:00 a.m.—Morning service. Bible lesson topic: "Unreality." Golden text: "Judge not according to the appearance, but judge righteous judgment." John 7:24.

**SALEM GROVE METHODIST CHURCH**  
The Rev. John Jolley, Pastor  
Sunday, Oct. 6—  
10:00 a.m.—Sunday school.  
11:15 a.m.—Worship service.

**FIRST ASSEMBLY OF GOD CHURCH**  
14900 Old US-12  
The Rev. Harold S. Bilotta, Pastor  
Sunday, Oct. 6—  
9:45 a.m.—Sunday school.  
11:00 a.m.—Worship service.  
7:00 p.m.—Evening service.  
Prayer meeting and Bible study each Thursday, 7:30-8:30 p.m.

**ST. JOHN'S EVANGELICAL AND REFORMED CHURCH**  
(United Church of Christ)  
(Francisco)  
The Rev. J. Tracy Luke, Pastor  
Sunday, Oct. 6—  
9:30 a.m.—Worship service and Sunday school.  
Mid-week Bible study classes began Sept. 18, 8-9 p.m., for all interested persons of the community.

**ST. PAUL'S EVANGELICAL AND REFORMED CHURCH**  
(United Church of Christ)  
The Rev. Paul M. Schnake, Pastor  
Thursday, Oct. 3—  
7:00 p.m.—Mailing committee.  
7:30 p.m.—Junior choir rehearsal.  
8:30 p.m.—Senior choir rehearsal.  
9:30 a.m.—Youth choir rehearsal.  
10:00 a.m.—Confirmation class.  
Sunday, Oct. 6—  
World Wide Communion Sunday.  
8:15 a.m.—Early Communion service.  
9:30 a.m.—Church school.  
10:45 a.m.—Second Communion service.  
Nursery available during both services.  
7:00 p.m.—Young People's meeting.

**ST. MARY'S CATHOLIC CHURCH**  
The Rev. Fr. Francis Maliszewski  
Sunday, Oct. 6—  
Masses at 8:30 a.m., 9:00 a.m., 10:00 a.m. and 11:30 a.m.

**BETHEL EVANGELICAL AND REFORMED CHURCH**  
(United Church of Christ)  
Freedom Township  
The Rev. T. W. Menzel, Pastor  
Sunday, Oct. 6—  
10:00 a.m.—Worship service in charge of James Helm.  
11:00 a.m.—Sunday school.

**NORTH LAKE METHODIST CHURCH**  
The Rev. John Jolley  
Sunday, Oct. 6—  
9:30 a.m.—Worship service.  
10:30 a.m.—Sunday school.  
MYF meeting the first Sunday of the month at 6:00 p.m.

**MT. HOPE METHODIST CHURCH**  
Cor. Seymour and Mt. Hope Rds.  
The Rev. Karl H. Keefe, Pastor  
Saturday, Oct. 5—  
9:30 a.m.—Children's and junior choir rehearsal.  
Sunday, Oct. 6—  
11:15 a.m.—Morning worship service. Loud speakers have been installed outside of the church so that those attired in camping clothes and parents with small children may sit in their cars if they prefer. World Wide Communion Sunday. Sermon topic: "The Significance of Communion."  
10:30 a.m.—Sunday school. Mrs. Ardel Landis, superintendent. The church is open every day from 2 to 5 p.m. for prayer and meditation.

**ST. JOHN'S EVANGELICAL AND REFORMED CHURCH**  
(United Church of Christ)  
(Rogers Corners)  
The Rev. J. Tracy Luke, Pastor  
Sunday, Oct. 6—  
10:00 a.m.—Sunday school.  
11:00 a.m.—Worship service.

**GREGORY BAPTIST CHURCH**  
The Rev. Robert Ramsayer, Pastor  
Sunday, Oct. 6—  
10:00 a.m.—Sunday school.  
11:00 a.m.—Morning worship.

**CHURCH OF CHRIST**  
18881 Old US-12, East  
Murray S. Hudgins, Minister  
Sunday, Oct. 6—  
10:00 a.m.—Bible study.  
11:00 a.m.—Worship service.  
6:00 p.m.—Worship service.  
Bible study each Thursday at 7 p.m.

**NORTH SHARON COMMUNITY BIBLE CHURCH**  
Paul Collins, Interim Pastor  
Sylvan and Washburn Roads  
Sunday, Oct. 6—  
10 a.m.—Sunday school.  
11 a.m.—Worship service.  
7 p.m.—Evening service.  
Prayer meeting each Wednesday evening at 7:30 o'clock.

**FIRST CHURCH OF CHRIST SCIENTIST**  
1883 Washtenaw Ave., Ann Arbor  
Sunday, Oct. 6—  
9:30 a.m.—Sunday school.  
11:00 a.m.—Morning service. Bible lesson topic: "Unreality." Golden text: "Judge not according to the appearance, but judge righteous judgment." John 7:24.

**SALEM GROVE METHODIST CHURCH**  
The Rev. John Jolley, Pastor  
Sunday, Oct. 6—  
10:00 a.m.—Sunday school.  
11:15 a.m.—Worship service.

**FIRST ASSEMBLY OF GOD CHURCH**  
14900 Old US-12  
The Rev. Harold S. Bilotta, Pastor  
Sunday, Oct. 6—  
9:45 a.m.—Sunday school.  
11:00 a.m.—Worship service.  
7:00 p.m.—Evening service.  
Prayer meeting and Bible study each Thursday, 7:30-8:30 p.m.

**ST. JOHN'S EVANGELICAL AND REFORMED CHURCH**  
(United Church of Christ)  
(Francisco)  
The Rev. J. Tracy Luke, Pastor  
Sunday, Oct. 6—  
9:30 a.m.—Worship service and Sunday school.  
Mid-week Bible study classes began Sept. 18, 8-9 p.m., for all interested persons of the community.

**ST. PAUL'S EVANGELICAL AND REFORMED CHURCH**  
(United Church of Christ)  
The Rev. Paul M. Schnake, Pastor  
Thursday, Oct. 3—  
7:00 p.m.—Mailing committee.  
7:30 p.m.—Junior choir rehearsal.  
8:30 p.m.—Senior choir rehearsal.  
9:30 a.m.—Youth choir rehearsal.  
10:00 a.m.—Confirmation class.  
Sunday, Oct. 6—  
World Wide Communion Sunday.  
8:15 a.m.—Early Communion service.  
9:30 a.m.—Church school.  
10:45 a.m.—Second Communion service.  
Nursery available during both services.  
7:00 p.m.—Young People's meeting.

**ST. MARY'S CATHOLIC CHURCH**  
The Rev. Fr. Francis Maliszewski  
Sunday, Oct. 6—  
Masses at 8:30 a.m., 9:00 a.m., 10:00 a.m. and 11:30 a.m.

**BETHEL EVANGELICAL AND REFORMED CHURCH**  
(United Church of Christ)  
Freedom Township  
The Rev. T. W. Menzel, Pastor  
Sunday, Oct. 6—  
10:00 a.m.—Worship service in charge of James Helm.  
11:00 a.m.—Sunday school.

**NORTH LAKE METHODIST CHURCH**  
The Rev. John Jolley  
Sunday, Oct. 6—  
9:30 a.m.—Worship service.  
10:30 a.m.—Sunday school.  
MYF meeting the first Sunday of the month at 6:00 p.m.

**MT. HOPE METHODIST CHURCH**  
Cor. Seymour and Mt. Hope Rds.  
The Rev. Karl H. Keefe, Pastor  
Saturday, Oct. 5—  
9:30 a.m.—Children's and junior choir rehearsal.  
Sunday, Oct. 6—  
11:15 a.m.—Morning worship service. Loud speakers have been installed outside of the church so that those attired in camping clothes and parents with small children may sit in their cars if they prefer. World Wide Communion Sunday. Sermon topic: "The Significance of Communion."  
10:30 a.m.—Sunday school. Mrs. Ardel Landis, superintendent. The church is open every day from 2 to 5 p.m. for prayer and meditation.

**ST. JOHN'S EVANGELICAL AND REFORMED CHURCH**  
(United Church of Christ)  
(Rogers Corners)  
The Rev. J. Tracy Luke, Pastor  
Sunday, Oct. 6—  
10:00 a.m.—Sunday school.  
11:00 a.m.—Worship service.

**GREGORY BAPTIST CHURCH**  
The Rev. Robert Ramsayer, Pastor  
Sunday, Oct. 6—  
10:00 a.m.—Sunday school.  
11:00 a.m.—Morning worship.

**CHURCH OF CHRIST**  
18881 Old US-12, East  
Murray S. Hudgins, Minister  
Sunday, Oct. 6—  
10:00 a.m.—Bible study.  
11:00 a.m.—Worship service.  
6:00 p.m.—Worship service.  
Bible study each Thursday at 7 p.m.

**NORTH SHARON COMMUNITY BIBLE CHURCH**  
Paul Collins, Interim Pastor  
Sylvan and Washburn Roads  
Sunday, Oct. 6—  
10 a.m.—Sunday school.  
11 a.m.—Worship service.  
7 p.m.—Evening service.  
Prayer meeting each Wednesday evening at 7:30 o'clock.

**FIRST CHURCH OF CHRIST SCIENTIST**  
1883 Washtenaw Ave., Ann Arbor  
Sunday, Oct. 6—  
9:30 a.m.—Sunday school.  
11:00 a.m.—Morning service. Bible lesson topic: "Unreality." Golden text: "Judge not according to the appearance, but judge righteous judgment." John 7:24.

## Don't Be 'Cleaned' By Shady Operator

(Note: This is one in a series of articles by Frank J. Kelley, State Attorney General, concerning frauds affecting the consumer of this state.)

My Consumer Protection Division has recently received numerous complaints from Michigan residents concerning the operations being conducted by some unscrupulous septic tank cleaning salesmen. These complaints usually involve misrepresentations to induce the unwary into contracting for septic tank cleaning and then overcharging for services rendered.

One approach which is frequently reported concerns the septic tank cleaning operator who calls or personally canvasses the neighborhood announcing that he is from the Michigan Department of Health and must inspect your septic tank to determine if it needs cleaning. This misrepresentation is bolstered by showing the customer his truck conveniently parked in the nearby driveway which bears the initials MHD followed by a number. This, he explains, means Michigan Health Department which it does. What he has not disclosed is that under state law all septic tank cleaner operators must

be licensed by the Department of Health, but they are not employed by the Department or authorized to represent themselves as agents of the state. To do so is a violation of the law.

The second most common complaint is overcharging. Beware the septic tank cleaning company which quotes a price per pound. Most of us would be astounded, as you one Michigan housewife, to discover too late that 5,700 pounds of sludge had supposedly been removed from her septic tank. At three cents per pound, what looked like a "good deal" turned into a "raw deal" to the tune of \$171.

Most reputable septic tank cleaners charge on the basis of so much per job, depending on the size of the tank to be cleaned.

A little caution and your own common sense can help you avoid being "cleaned" by the shady operators in this field.

Delta county farmers in Michigan's Upper Peninsula have set state and national yield records for the growth of nonirrigated potatoes, over 1,040 bushels an acre.

Michigan's deer herd, averaging annually more than 600,000 animals, is one of the largest east of the Rocky Mountains.

Michigan's deer herd, averaging annually more than 600,000 animals, is one of the largest east of the Rocky Mountains.

Michigan's deer herd, averaging annually more than 600,000 animals, is one of the largest east of the Rocky Mountains.

Michigan's deer herd, averaging annually more than 600,000 animals, is one of the largest east of the Rocky Mountains.

Michigan's deer herd, averaging annually more than 600,000 animals, is one of the largest east of the Rocky Mountains.

Michigan's deer herd, averaging annually more than 600,000 animals, is one of the largest east of the Rocky Mountains.

Michigan's deer herd, averaging annually more than 600,000 animals, is one of the largest east of the Rocky Mountains.

Michigan's deer herd, averaging annually more than 600,000 animals, is one of the largest east of the Rocky Mountains.

Michigan's deer herd, averaging annually more than 600,000 animals, is one of the largest east of the Rocky Mountains.

Michigan's deer herd, averaging annually more than 600,000 animals, is one of the largest east of the Rocky Mountains.

Michigan's deer herd, averaging annually more than 600,000 animals, is one of the largest east of the Rocky Mountains.

## EAVETROUGHING and Lightning Rod SERVICE

TV TOWERS and ANTENNAS

**WILSON METAL SHOP**  
Phone GA 8-2730 Manchester, Mich.

If You Plan To Build or Remodel Your Home Call Us for . . .

**FREE ESTIMATES OR BIDS**  
— on —  
**PLUMBING, WIRING and HEATING**  
All Work Guaranteed with 1 Year Free Service  
WE SELL FOR LESS - WE WILL SAVE YOU MONEY  
Hours: Daily, 8-5:30; Friday, 8 a.m. to 8 p.m.  
EMERGENCY SERVICE CALLS: GR 9-5948

**HILLTOP PLUMBING, HEATING & ELECTRICAL CONTRACTORS**  
201 SOUTH MAIN STREET  
Chelsea, Mich.  
Phone 479-3851

**The Church of Christ**  
13661 Old US-12, Chelsea, Mich.

Invites You, Your Family and Friends to Hear  
**CHRIST'S MESSAGE TO YOU**  
Proclaimed By  
**CLARK ELKINS**  
of Flat Rock, Mich.

**Oct. 6 thru Sunday, Oct. 13**  
Services Each Evening  
At 7:30 p.m.

**Collections On Sunday Only**

**Ten Reasons Why I Swear**

1. It pleases mother so much.  
2. It is a fine mark of manliness.  
3. It proves I have self control.  
4. It indicates how clearly my mind operates.  
5. It makes my conversations so pleasing to everybody.  
6. It leaves no doubt on anyone's mind as to my good breeding.  
7. It impresses people that I have more than ordinary education.  
8. It is an unmistakable sign of culture.  
9. It makes me a very desirable personality among women and children in respectable society.  
10. It is my way of honoring God who said "Thou shalt not take the name of the Lord thy God in vain."

IT SEEMS that god does not mean much to some. They use His Holy Name thoughtlessly. But if they had been born again of God, and



## Charlotte Family Chosen Michigan's Outstanding Young Dairy Couple



WIN DAIRY HONOR—The Ralph Letson family of Charlotte drink a happy toast after learning they have been chosen "Michigan's Outstanding Young Dairy Couple" in a contest sponsored by Michigan Milk Producers Association to encourage agricultural leadership among young farm couples.

A young Charlotte, dairy farmer and his wife, who have built a thriving dairy farm by "doing what comes naturally" have been named Michigan's Outstanding Young Dairy Couple for 1964.

Ralph and Betty Letson won the title this month when judges picked them over 11 district winners in a state-wide contest sponsored by Michigan Milk Producers Association to recognize and encourage agricultural and community leadership among young farm couples. Second place went to Gordon and Phyllis Fuestenau of Richmond.

Judges cited the Letsons for "outstanding balance in farm operations," and acclaimed the couple for their "active participation in farm and community organizations." Ralph is a director and treasurer of the Lansing local of Michigan Milk Producers Association, and is a member of several important state committees of MMPA. Both Ralph and Betty are officers of local Farm Bureau, Agricultural Extension, and church groups.

The young couple credit 4-H projects and the experience and knowledge of others for much of their success in farming.

They stocked the small farm they bought in 1952 with six cows Ralph had developed as 4-H dairy projects, plus 12 that Betty got from her dad when he quit farming. The machinery had been acquired by Ralph during four years of partnership with his father.

Often working 16 hours a day, and rebounding from the loss of their barn in a 1957 fire, Ralph and Betty Letson have steadily built from their modest start and today, at 32, have a prosperous "dairy farmer's farm" of 280 acres with 67 high-producing Holsteins and Guernseys.

Ralph takes particular pride in the herd. He insists on handling the milking chores alone most of the time and feels this has helped him raise herd production to an average of 12,000 lbs. of milk and 503 lbs. of butterfat per cow per year—well above the average of the state.

How does a young couple like this achieve such a success story? "Both our dads helped us get our feet on the ground," Ralph admits. "That's about the only way a young man can get started in farming these days."

"You certainly need good cattle and good management, and you have to like farming," he goes on. "But I think the key is to make the right decisions and to make full use of the know-how and experience of others. Michigan State University and people like our County Agricultural Agent have certainly helped us."

Contest judges Donald Murray, Dairy Specialist from Michigan State University, Edwin St. John, Michigan Department of Public Instruction, and Dale East, a dairy farmer and MMPA Director from Albion, gave the Letsons themselves most of the credit for the progress they have shown. "They've just darned good dairy farmers," said the judges.

Neither Ralph nor Betty feel they have reached their goal. "We've got a long way to go to pay for what we've got," they said, "and we need more land to make full use of our machinery. Some day we'd like to be able to do for our children what others have done for us."

The Letsons have three youngsters—Darwin, 3, Lavonne, 7, and Jeanne, "almost 9."

As an award for being chosen the Outstanding Young Dairy Couple, the Letsons will receive an expense paid trip to Miami, Dec. 8 to 13, where they will represent Michigan in the Young Co-Operators' sessions of the National Milk Producers Federation annual convention.

Products from Benton Harbor's municipal fruit market, largest cash-to-grower market in the world, move to 28 states.



### BOY SCOUT NEWS

#### TROOP 76

The meeting of Sept. 9 was held as a get-acquainted meeting, with games. The meeting of Sept. 10 we had re-elections of officers. Larry Poertner is now senior patrol leader, Ray Worden, patrol leader of Fox Patrol, Steve Slane, patrol leader of Hawks Patrol, Ken Lofquist, patrol leader of the Half Moon Patrol, and Bill Boyle, patrol leader of the Flaming Arrow Patrol. The meeting of Sept. 23 was advancement on first class Morse Code, second class first aid, and tenderfoot instruction on the Scout badge.

Larry Poertner, scribe.

Do you enjoy pickles? Chances are you are consuming Michigan cucumbers, because many firms with out-of-state labels look to Michigan as their source. The state is No. 1 in this department, but in volume of cucumbers for fresh market, we are 10th. Yield last year was 115,888 tons for pickle processors, valued at \$6,983,000 to the grower. There also were 84,000 hundredweight of cucumbers for the fresh fruit market, worth \$821,000.

### Brownies...

Troop 247 had their first meeting last Tuesday at South school. The Brownies who were in the troop last year welcomed 11 new members. The older girls each chose a new member to be her "little sister."

Kathy Foster, a Senior Girl Scout, taught the Brownies a new name and the Brownie Smile Song. Mrs. F. Belser and Mrs. J. Shadon served refreshments.

Betsy Belser, scribe.

SUBSCRIBE TODAY TO THE CHELSEA STANDARD!

**Monson**  
CABINET WORKS  
1200 N. Main St. Ann Arbor, Mich.  
FOR  
**COMPLETE KITCHENS**  
CALL 665-0613

COMING UP...ANNUAL CHELSEA JAYCEE  
**CHICKEN BARBECUE**  
SUNDAY, OCT. 13  
PIERCE PARK, CHELSEA - SERVING BEGINS AT NOON  
Held in Co-Operation with the Chamber of Commerce Sponsored  
Annual Fall Color Tour  
TAKE-OUTS AVAILABLE  
PRICE: \$1.50

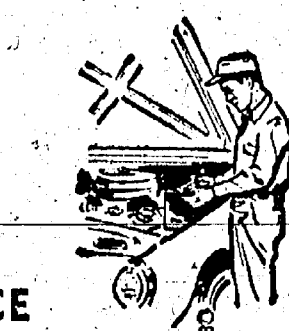
**Now Open!**  
**A & W Drive-In**  
CHELSEA-MANCHESTER ROAD  
(500 feet north of I-94)  
CHELSEA, MICH.  
Free Root Beer for Kiddies 5 and under  
**Root Beer & Sandwiches**  
HOURS OPEN:  
Sunday thru Thursday 11 a.m. to 10 p.m.  
Friday and Saturday 11 a.m. to 11 p.m.  
Closed earlier if weather is too cold!

**CHARLES WIELAND**  
— TAKE-OUT ORDERS —

### COMPLETE SERVICE on all model automobiles

- ★ MOTOR OVERHAUL
- ★ WINTER TUNE-UP
- ★ TIRES
- ★ RADIATOR SERVICE
- ★ CARBURETOR SERVICE

**24 HOUR WRECKER SERVICE**



**Balmer's Brake Service**  
140 West Middle St. Chelsea  
Phone GR 5-5131

### St. Mary's School Association Plans Euchre Party

Sister Ann Seraphim, Sister Jean Barbara and 42 parents were present Tuesday evening for a meeting of St. Mary's School Association at the school. The first grade was awarded the banner, given each month to the class with the greatest percentage of parent attendance at the Association meeting.

Principal topic of discussion at Tuesday's meeting was the euchre party the Association is sponsoring at Chelsea High school cafeteria at 8 p.m. Saturday.

It was pointed out that plans are complete and that with full support of the members the project should prove a success. Proceeds are designated for the benefit of St. Mary's school.

Proceeds of a similar party last year were used for the purchase of three sets of encyclopedias for the school's classrooms.

Other fund-raising projects were discussed and a committee was appointed to investigate possibilities. Included on the committee are Harold Pennington, Donald Alber, Keith Rappette and Jack Merkel.

Members of the Association expressed the opinion that one successful major fund-raising project would be more acceptable than a number of smaller projects.

Sister Seraphim, principal of St. Mary's school, announced that the school will be in session Oct. 17 and 18 although Chelsea public schools will be closed those days. St. Mary's school children's parents will be responsible for the pupils' transportation for the two days while school buses are not running. Sister Seraphim explained that it is necessary to have classes at St. Mary's on both these days in order to complete the school year at the same time as the public school.

She also announced that school children will be selling magazines and Christmas cards to earn money for school necessities.

Mrs. Edward Orlovski mentioned the need of additional science books for reading material and suggested that the Association find some way to provide them.

Donald Alber reported to the group that a recreation program in the community is to begin in November, and the program will include year-around activities for adults as well as children and young people.

Mrs. Orlovski and Mrs. John Thomson will be on the refreshment committee for the next regular meeting on Tuesday, Nov. 5. Assisting as hostesses at the Oct. 1 meeting were Mrs. Paul Maynard and Mrs. N. H. Miles.

Issue Newton lived 1642-1727.

### Gambles The Friendly Store



**VARCON Bonded Anti-Freeze**  
Forget about dangerous cold weather freeze-ups with Varcon Bonded anti-freeze. Pay up to \$100 if failure results in damage when used according to directions. A 50-50 mixture protects to 45° below zero. Buy yours today!  
Quart Can ..... 29c  
GALLON CAN

**None Finer!**  
Buy VARCON Permanent Anti-Freeze

GALLON CAN \$1.69  
QUART CAN 45c

**VARCON METHANOL**  
Dependable freeze protection at lowest cost! Anti-rust. Gallon bulk in your container.  
Quart Can ..... 59c

**FAMOUS PRESTONE**  
Don't get ball away, protects all! Stays, prevents rust.  
\$1.98 Gal.

### END BATTERY WORRIES FOR THE NEXT 3 WINTERS!

## VARCON DELUXE Original Equipment Capacity

- Rugged Hard Rubber Case
  - Dependable in Cold Weather
  - Buy Varcon Deluxe on Time
- Be prepared for the cold winter months ahead—install a dependable Varcon now. You'll get quicker engine response—extra battery power when you need it. No money down—use your old battery as down payment at Gambles.

**\$12.95**  
Group 1, 2L 6 Volt Exchange

Group 2N ..... \$13.95

### 12 VOLT VARCON DELUXE

Group 24S 1955-59 Chev., Plym., Pontiac, Dodge, DeSoto \$15.95 EXCH.  
Group 60K '54-55 Olds, '55-59 Buick, '57-58 Cadillac \$16.95 EXCH.  
Group 28N, 3EE '56-59 Ford-Merc., '53 Olds, '53-54 Buick \$16.95 EXCH.



- ★ GUARANTEED 30 MONTHS!
- ★ PLASTIC SEPARATORS!
- ★ SILVER SEALED GRIDS!

\*Warranted on a pro-rata basis. Pay only for service obtained.

**FREE INSTALLATION!**

### HUNTERS—Get the Best for Less at Gambles!

**REMINGTON EXPRESS** \$2.88  
12-16-20-410 Gauge—High Brass Base Maximum Loads and Standard Magnum Loads  
More power—more reach with Remington "Express". Chamber for perfect patterns, wad-proof and wad-resistant shell bodies. 20-1008

- PLASTIC GUN CASE** Vinyl Cover with Flannel Lining..... \$2.79
- HUNTING CAP** Brown Visor Style Hunting Cap made of quality, water repellent duck.... \$1.19
- SHELL VEST** Brown Army Duck S-M-L Sizes..... \$2.98
- HOPPE GUN SOLVENT** . . . 45c
- Browning Ultra-Fine Gun Oil** . 60c
- WE SELL HUNTING LICENSES

### We Carry All Famous Makes

**Browning Remington Stevens Savage Martin Winchester**  
**TRADE GUNS!**  
Trade and pay even less than advertised price. Bring in your old gun today for a free appraisal.  
Buy on Time Payment!  
A. Hiawatha Pump Model 870. \$8.50 down \$79.95  
"Wingmaster" 12 ga. is lightweight and perfectly balanced. \$139.75  
B. Browning Automatic 10.95 DOWN. 12 ga. loads, ejects automatically. \$31.50  
C. STEVENS SINGLE—MODEL 94 3.75 DOWN. Lightweight 12 ga. for youth. Automatic ejector and 28-inch barrel. \$31.50

**GAMBLES-FAMOUS FOR DISCOUNT SAVINGS**

Standard Ads Are a Good Shopping Guide!

## HERE TODAY!

We Invite You To Come in and See

THE ALL NEW  
**'64 PONTIAC TEMPEST**

at  
**Harper Sales & Service, Inc.**  
118 W. Middle St. CHELSEA Phone GR 5-5311

### Dave Potts' FUEL KIDS



Yes, our dependable fuel oil service is YOUR assurance of warmer, steadier heat in your home all winter. Call us today.

Call GR 9-3311 now.

**DAVE POTTS**  
682 W. MIDDLE ST. Phone GR 9-3311